

ARMORED 2022 GMC YUKON DENALI

NEW GENERATION BODY STYLE



LEVEL A9/B6+

AGAINST 7.62 x 39mm, 5.56 x 45mm, 7.62 x 51mm



VEHICLE SPECIFICATIONS

GENERAL SPECIFICATIONS

MAKE:	GMC
MODEL:	Yukon Denali 4WD
TRIM:	Denali Premium Package
YEAR:	2022 - NEW
ENGINE:	6.2L V8 Gasoline
POWER:	420 hp - 460 lb.-ft. @4100 rpm
TRANSMISSION:	10-Speed Automatic
EXTERIOR COLOR:	Onyx Black
INTERIOR COLOR:	Jet Black
SEATING:	2 + 2 + 3
Armored Weight:	8,300 LBS (3,764 KG)



HEIGHT:
76.5 in.
(194 cm)

WIDTH:
81 in.
(206 cm)

LENGTH:
210 in.
(533 cm)

WHEELBASE:
120 in.
(307 cm)

ALPINE ARMORING INC.



"no one protects you better."





ALPINE ARMORING INC.

3

"no one protects you better."



Firewall

Minimal-piece Ballistic steel firewall provides protection up front.

3-1



Roof

Lined and seam welded with ballistic steel for protection against angled projectiles.

3-2



Floor

Lined with ballistic steel to protect against explosive threats.

3-3



Doors

Lined with ballistic steel to stop any side and vertical threats.

3-4



Battery Protection

Fully enclosed in serviceable ballistic steel casings.

3-5



Rear Partition Door

Customized ballistic rear swinging partition door with viewing window installed. Manual interior release access for rear hatch included.

3-6



Overlaps

All doors, vertical panels, and windows feature ballistic steel overlaps to keep shrapnel from entering the cabin.

3-7



Wheel Wells

Lined with ballistic steel to prevent against penetration.

3-8





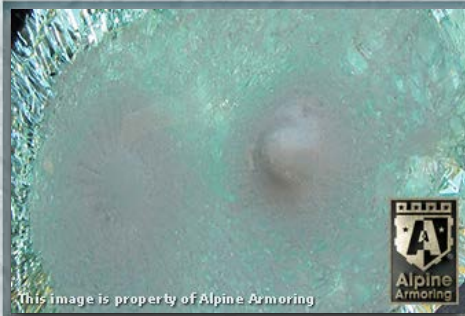
ALPINE ARMORING INC.



Glass Armor

Minimum 40 mm thick glass/polycarbonate composite A9/B6+/NIJ III transparent armor installed on the vehicle.

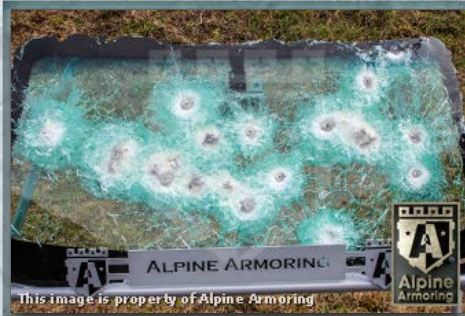
4-1



Anti-Spall Layer

Inner-most anti-spall layer prevents glass and bullet fragments from penetrating into passenger cabin area and is free of any optical distortion and discoloration.

4-2



Multi-Hit Protection

All windows are capable of sustaining multiple hits while providing protection to passengers.

4-3

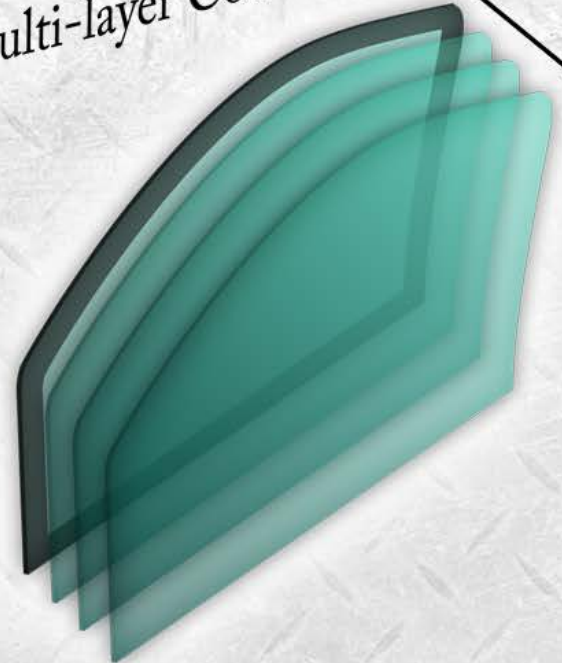


Front Power Windows

Both front driver and passenger windows are power operable.

4-4

Multi-layer Construction

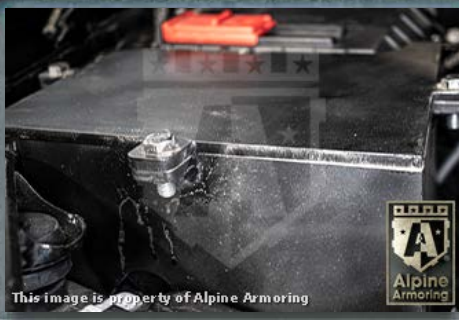




ALPINE ARMORING INC.

5

"no one protects you better."



ECM/Fuse Box Protection

The ECM/Fuse box is encased in A9/B6+/NIJ III level ballistic steel.

5-1

Battery Protection

The battery is encased in a ballistic steel box for protection. A master battery kill switch will also be installed under the hood.

5-5



Power Windows

The front driver and passenger window are powered and lower approximately 3 - 5 inches.

5-2

Fuel Tank Protection

Protected by a ballistic steel box against two simultaneous grenades and other blasts.

5-6



Upgraded Hinges

Equipped with state-of-the-art Heavy-Duty (HD) hinges that have a built-in door stopper, preventing the use of retaining straps and door swing.

5-3

Tailpipe Protection

Features a special mesh that prevents the exhaust system from being sabotaged.

5-7



Run-Flat Inserts/Jack Points

Vehicle will be equipped with full-size Flats Over run-flat inserts in each 8 ply or better LT truck tires (including spare tire). Two clearly labeled jack points and a 5 ton bottle jack will be provided.

5-4

Upgrade Suspension

The vehicle's suspension (HD Coils) will be upgraded to accommodate the added armor weight, along with chassis reinforcement as deemed necessary .

5-8





ALPINE ARMORING INC.

"no one protects you better."



Upgraded Braking

The vehicle's braking system (rotors & pads) will be upgraded to accommodate the added armor weight.

6-1

Sunroof Delete

The panoramic sunroof is ballistically protected, and the functionality of the sunroof is therefore disabled for security.

6-5



Ballistic Door Overlap

Each door is equipped with ballistic steel overlap with added custom bullet-catchers wrapped in high quality leather or vinyl.

6-2

Rear Door Partition

Added center gunport and manual interior release access for rear hatch included.

6-6



OEM Appearance

The interior & exterior of the vehicle with the VIP Armoring conversion will maintain the OEM appearance of the factory vehicle.

6-3

Front Control Switches

An On/Off switch for the airbag is located near the driver's seat of vehicle. A rollover fuel cell reset is done by restarting the vehicle.

6-7



P.A./Multi-Siren System

Located on the center console. The multi-siren features standard siren tones, volume adjustment, and a public address system.

6-4

Tailpipe Protection

The tailpipe features a special mesh that prevents the tailpipe from being sabotaged.

6-8



COMPLETED VEHICLE PHOTOS: EXTERIOR



ALPINE ARMORING INC.

7

"no one protects you better."



COMPLETED VEHICLE PHOTOS: EXTERIOR



ALPINE ARMORING INC.



8-1



8-2



8-3



8-4



COMPLETED VEHICLE PHOTOS: INTERIOR



ALPINE ARMORING INC.



ALPINE ARMORING'S BALLISTIC CHART

WEAPONS	SPECS			LEVELS					BULLETS			NUMBER OF SHOTS	
	TYPE	CALIBER (mm)	CLASS	STANAG	UL	ALPINE	NIJ	CEN	MASS (g)	MATERIAL	VELOCITY		
	.38 Special	9 x 19	Handgun	—	1	A1	I,II,IIA	—	8.00	LCCJ	358 M/S	5	
	.357 Magnum	9 x 33	Handgun	—	2	A2	I,IIA	B1 & B3	10.20	JSP	430 M/S	5	
	.44 Magnum	11 x 33	Handgun	—	3	A3	IIIA	B4	15.60	LWC	440 M/S	5	
	MP5	9 x 19	SMG	—	6	A4	IIIA	B2	8.00	LCCJ	427 M/S	5	
	Shotgun	12 Gauge	Shotgun	—	3 & 4	A5	IIIA	SG2	28.30	SLUG	503 M/S	3	
	Tokarev	7.62 x 25	Handgun	—	—	A5	IIIA	—	5.50	LCSJ	488 M/S	5	
	Kalashnikov (AK-47)	7.62 x 39	Assault Rifle	—	—	A6	III	B5	9.70	SCCJ	732 M/S	5	
	Kalashnikov (AK-47 Military)	7.62 x 39 API BZ	Assault Rifle	II	—	A7	—	B5+	11.70	SCCJ	774 M/S	5	
	M16/AR-15	5.56 x 45 NATO SS109 5.56 x 45 NATO Ball	Assault Rifle	I	7	A8	IV	B5	4.00	SCCJ LCCJ	900 M/S 833 M/S	3	
	Winchester .308	7.62 x 51	Rifle	I	7	A9	III	B6	10.90	LCCJ	810 M/S	5	
	Remington 700 SPS	7.62 x 63 AP (.30-06) 7.62 x 51AP (WC core)	High-Power Rifle	III	5 & 8	A10	IV	B7-	10.80 8.40	AP	869 M/S 930 M/S	5	
	Dragunov	7.62 x 54R B32 API	Sniper Rifle	III	—	A11	IV+	B7+	10.04	SCCJ	854 M/S	1	
	.50 Cal	12.7 x 99	High-Power Rifle	IV	10	A12	—	—	45.00	CJ	908 M/S	1	

"no one protects you better"



UL Underwriters Laboratory, 752
NIJ National Institute of Justice, 0108.01
CEN European Standard
STANAG ... NATO's Standard (STANAG 4569)
ALPINE Alpine Armoring's Certified Standard

LCCJ Lead Core Copper Jacket
JSP Jacketed Soft Point
LWC Lead Wad Cutter
LCSJ Lead Core Steel Jacket
SCCJ Steel Core Copper Jacket
AP Armor Piercing
SG Shotgun

Shots (5) 11.4 cm Square Pattern (Corners & Center)
Shots (3) 11.4 cm Triangular Pattern
Velocity Minimum Measured Velocity
NIJ Rating .. Levels I, II, IIA, & IIIA (based on 1 of 2 required calibers of ballistic threat)



ALPINE ARMORING INC.





ALPINE ARMORING INC.



WARRANTY

ARMORED GMC YUKON DENALI

This vehicle, as proposed to the client in this quote, would be under Alpine Armoring's premium warranty covering both the OEM and the entire conversion parts including all armored parts and labor as well as all added accessories for one full year, effective the day of sale. Additional warranty for longer period is available upon request.

Alpine Armoring Inc. hereby honors this warranty in the United States and around the world against any and all related manufacturer's defects, including parts & labor.

MANAGEMENT AUTHORIZED
ALPINE ARMORING INC.
CHANTILLY, VIRGINIA, USA

DATE ISSUED

