

# NEW ARMORED CADILLAC ESCALADE ESV 4WD LUXURY

NEW GENERATION BODY STYLE



**LEVEL A9**

AGAINST 7.62 x 39mm, 5.56 x 45mm, 7.62 x 51mm



# VEHICLE SPECIFICATIONS

## GENERAL SPECIFICATIONS

<b>MAKE:</b>	Cadillac
<b>MODEL:</b>	Escalade ESV
<b>TRIM:</b>	Premium Luxury
<b>YEAR:</b>	NEW
<b>ENGINE:</b>	6.2L V8 Gasoline
<b>POWER:</b>	420 hp - 460 lb.-ft
<b>TRANSMISSION:</b>	10-Speed Automatic
<b>COLOR:</b>	Black Raven
<b>INTERIOR:</b>	Black Leather
<b>SEATING:</b>	2 + 2 + 3
<b>FINAL WEIGHT:</b>	8,700 lbs (3,946kg.) Armored



**HEIGHT:**  
**76.7 in.**  
 (194 cm)

**WIDTH:**  
**81.1 in.**  
 (205 cm)

**LENGTH:**  
**227 in.**  
 (576 cm)

**WHEELBASE:**  
**120.9 in.**  
 (307 cm)

ALPINE ARMORING INC.





ALPINE ARMORING INC.

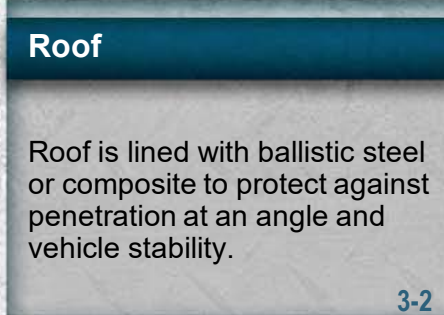
"no one protects you better."



### Firewall

Ballistic steel or composite material firewall provides protection from explosion and different angle of attacks.

3-1



### Roof

Roof is lined with ballistic steel or composite to protect against penetration at an angle and vehicle stability.

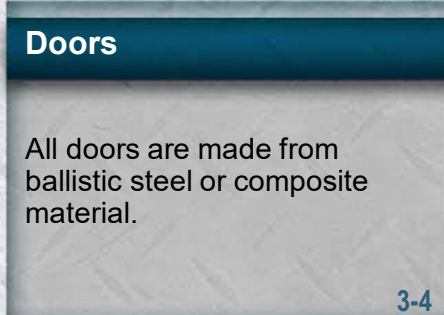
3-2



### Floor

Floor is lined with ballistic steel or composite to protect against mines and grenade blasts.

3-3



### Doors

All doors are made from ballistic steel or composite material.

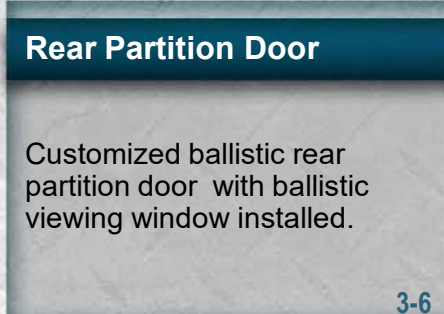
3-4



### Reinforced Door Hinges

Vehicle will be equipped with state-of-the-art Heavy-Duty (HD) hinges that have a built-in door stopper, preventing the use of retaining straps and door swing..

3-5



### Rear Partition Door

Customized ballistic rear partition door with ballistic viewing window installed.

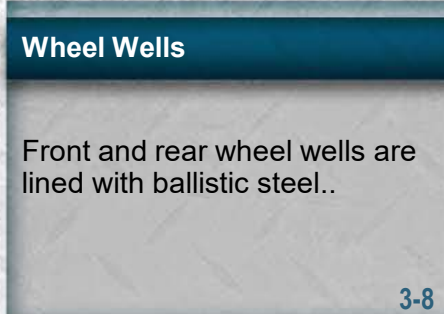
3-6



### Overlaps

All doors and windows feature ballistic steel overlaps to keep shrapnel from angle shots from entering the cabin.

3-7



### Wheel Wells

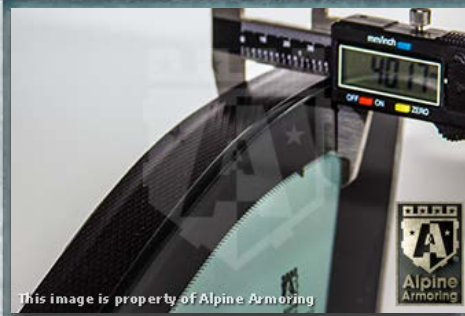
Front and rear wheel wells are lined with ballistic steel..

3-8





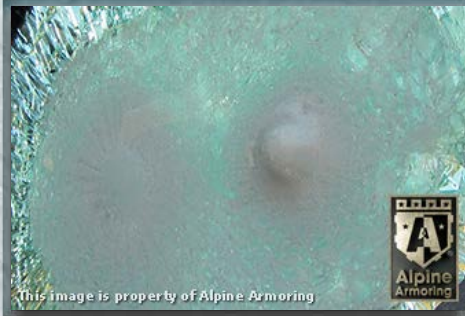
ALPINE ARMORING INC.



### Glass Armor

Minimum 40 mm thick glass/polycarbonate composite A9/B6/NIJ III transparent armor installed on the vehicle.

4-1



### Anti-Spall Layer

Inner-most anti-spall layer prevents glass and bullet fragments from penetrating into passenger cabin area and is free of any optical distortion and discoloration.

4-2



### Multi-Hit Protection

All windows are capable of sustaining multiple hits while providing protection to passengers.

4-3

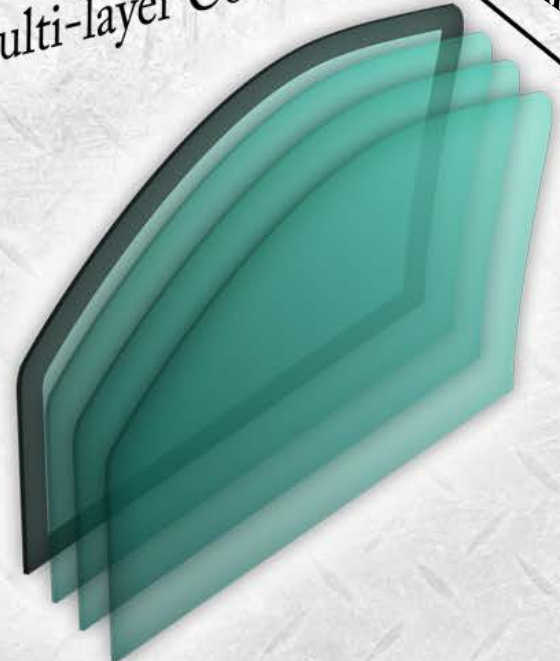


### Front Power Windows

The front 2 windows are equipped with special custom-designed heavy duty actuator mechanism to allow for faster and quieter operation with maximum traveling distance.

4-4

Multi-layer Construction 40 mm





ALPINE ARMORING INC.

"no one protects you better."



### Ballistic Door Overlap

Each door is equipped with ballistic steel overlap with added custom bullet-catchers wrapped in high quality leather or vinyl.

5-1



### Power Windows

The front driver and passenger window are powered and lower approximately 10 inches.

5-2



### Rear Door Partition

The rear door partition is equipped with thick ballistic window.

5-3



### Tailpipe Protection

The tailpipe features a special mesh that prevents the tailpipe from being sabotaged.

5-4

### HD 6 Piston Brake Kit

The vehicle's braking system (rotors & pads) are upgraded to accommodate the added armor weight.

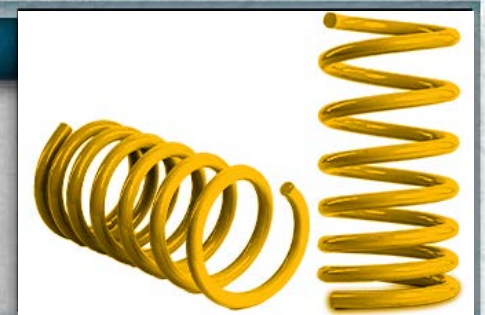
5-5



### Upgrade Suspension

The vehicle's suspension (HD Coils) will be upgraded to accommodate the added armor weight, along with chassis reinforcement as deemed necessary.

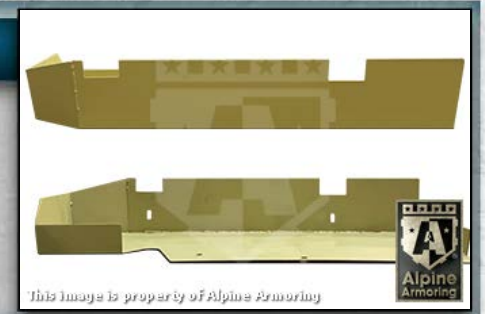
5-6



### Fuel Tank Protection

Fuel tank is protected by a ballistic steel box. Protects from two simultaneous grenades.

5-7



### Run-Flat Inserts

Vehicle will be equipped with full-size run-flat inserts in each tire.

5-8





ALPINE ARMORING INC.



**Battery Protection**

The battery is encased in a ballistic steel box to protect it.

6-1



**P.A./Multi-Siren System**

Located on the center console. The multi-siren features standard siren tones, volume adjustment, and a public address system.

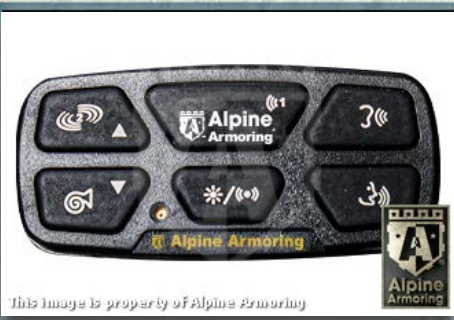
6-2



**Strobe Lights**

Two white strobe lights are mounted in the front grill. Controlled using the P.A./siren control unit in the center console.

6-3



**P.A./Multi-Siren System**

Located on the center console. The multi-siren features standard siren tones, volume adjustment, and a public address system.

6-4

**Reinforced Door Hinges**

Vehicle will be equipped with state-of-the-art Heavy-Duty (HD) hinges that have a built-in door stopper, preventing the use of retaining straps and door swing..

6-5



**Rear Escape Hatch**

Added center gunport and manual interior release access for rear hatch included.

6-6



**Rear Quarter Glass**

The rear quarter panel of the vehicle is reinforced with ballistic glass

6-7



**OEM Appearance**

The exterior of the vehicle with the Armoring conversion will maintain the OEM appearance of the factory vehicle.

6-8



# COMPLETED VEHICLE PHOTOS: EXTERIOR



ALPINE ARMORING INC.



7-1



7-2



7-3



7-4



"no one protects you better."





# COMPLETED VEHICLE PHOTOS: EXTERIOR

ALPINE ARMORING INC.







# COMPLETED VEHICLE PHOTOS: INTERIOR

ALPINE ARMORING INC.



9-1



9-2



9-3



9-4



# ALPINE ARMORING'S BALLISTIC CHART

WEAPONS	SPECS			LEVELS					BULLETS			NUMBER OF SHOTS	
	TYPE	CALIBER (mm)	CLASS	STANAG	UL	ALPINE	NIJ	CEN	MASS (g)	MATERIAL	VELOCITY		
	.38 Special	9 x 19	Handgun	—	1	A1	I,II,IIA	—	8.00	LCCJ	358 M/S	5	
	.357 Magnum	9 x 33	Handgun	—	2	A2	I,IIA	B1 & B3	10.20	JSP	430 M/S	5	
	.44 Magnum	11 x 33	Handgun	—	3	A3	IIIA	B4	15.60	LWC	440 M/S	5	
	MP5	9 x 19	SMG	—	6	A4	IIIA	B2	8.00	LCCJ	427 M/S	5	
	Shotgun	12 Gauge	Shotgun	—	3 & 4	A5	IIIA	SG2	28.30	SLUG	503 M/S	3	
	Tokarev	7.62 x 25	Handgun	—	—	A5	IIIA	—	5.50	LCSJ	488 M/S	5	
	Kalashnikov (AK-47)	7.62 x 39	Assault Rifle	—	—	A6	III	B5	9.70	SCCJ	732 M/S	5	
	Kalashnikov (AK-47 Military)	7.62 x 39 API BZ	Assault Rifle	II	—	A7	—	B5+	11.70	SCCJ	774 M/S	5	
	M16/AR-15	5.56 x 45 NATO SS109 5.56 x 45 NATO Ball	Assault Rifle	I	7	A8	IV	B5	4.00	SCCJ LCCJ	900 M/S 833 M/S	3	
	Winchester .308	7.62 x 51	Rifle	I	7	A9	III	B6	10.90	LCCJ	810 M/S	5	
	Remington 700 SPS	7.62 x 63 AP (.30-06) 7.62 x 51AP (WC core)	High-Power Rifle	III	5 & 8	A10	IV	B7-	10.80 8.40	AP	869 M/S 930 M/S	5	
	Dragunov	7.62 x 54R B32 API	Sniper Rifle	III	—	A11	IV+	B7+	10.04	SCCJ	854 M/S	1	
	.50 Cal	12.7 x 99	High-Power Rifle	IV	10	A12	—	—	45.00	CJ	908 M/S	1	

"no one protects you better"



**UL** ..... Underwriters Laboratory, 752  
**NIJ** ..... National Institute of Justice, 0108.01  
**CEN** ..... European Standard  
**STANAG** ... NATO's Standard (STANAG 4569)  
**ALPINE** .... Alpine Armoring's Certified Standard

**LCCJ** ..... Lead Core Copper Jacket  
**JSP** ..... Jacketed Soft Point  
**LWC** ..... Lead Wad Cutter  
**LCSJ** ..... Lead Core Steel Jacket  
**SCCJ** ..... Steel Core Copper Jacket  
**AP** ..... Armor Piercing  
**SG** ..... Shotgun

**Shots (5)** .... 11.4 cm Square Pattern (Corners & Center)  
**Shots (3)** .... 11.4 cm Triangular Pattern  
**Velocity** ..... Minimum Measured Velocity  
**NIJ Rating** .. Levels I, II, IIA, & IIIA (based on 1 of 2 required calibers of ballistic threat)



ALPINE ARMORING INC.





ALPINE ARMORING INC.



# WARRANTY

## ARMORED CADILLAC ESCALADE ESV 4WD LUXURY

This vehicle, as proposed to the client in this quote, would be under Alpine Armoring's premium warranty covering both the OEM and the entire conversion parts including all armored parts and labor as well as all added accessories for one full year, effective the day of sale. Additional warranty for longer period is available upon request.

Alpine Armoring Inc. hereby honors this warranty in the United States and around the world against any and all related manufacturer's defects, including parts & labor.

MANAGEMENT AUTHORIZED  
ALPINE ARMORING INC.  
CHANTILLY, VIRGINIA, USA

\_\_\_\_\_ DATE ISSUED

