

ARMORED GMC YUKON DENALI XL

NEW GENERATION BODY STYLE



LEVEL A9

AGAINST 7.62 x 39mm, 5.56 x 45mm, 7.62 x 51mm





VEHICLE SPECIFICATIONS

GENERAL SPECIFICATIONS

MAKE: GMC

MODEL: Yukon Denali XL 4WD

YEAR: NEW

ENGINE: 6.2L EcoTec3 V8 Gasoline

POWER: 420 hp - 460 lb.-ft.

TRANSMISSION: 10-Speed Automatic

EXTERIOR COLOR: Onyx Black

INTERIOR COLOR: Jet Black

SEATING: 2 + 2 + 3

Armored Weight: 8,440 lbs (3,828 kg)

HEIGHT:
76.5 in.
(194 cm)

WIDTH:
81 in.
(206 cm)

LENGTH:
225 in.
(571 cm)

WHEELBASE:
134 in.
(341 cm)



ALPINE ARMORING INC.





ALPINE ARMORING INC.

"no one protects you better."



Firewall

Ballistic steel or composite material firewall provides protection from explosion and different angle of attacks.

3-1

Roof

Roof is lined with ballistic steel or composite to protect against penetration at an angle and vehicle stability.

3-2



Floor

Floor is lined with ballistic steel or composite to protect against mines and grenade blasts.

3-3

Doors

All doors are made from ballistic steel or composite material.

3-4



Reinforced Door Hinges

Vehicle will be equipped with state-of-the-art Heavy-Duty (HD) hinges that have a built-in door stopper, preventing the use of retaining straps and door swing..

3-5

Rear Partition Door

Customized ballistic rear partition door with ballistic viewing window installed.

3-6



Overlaps

All doors and windows feature ballistic steel overlaps to keep shrapnel from angle shots from entering the cabin.

3-7

Wheel Wells

Front and rear wheel wells are lined with ballistic steel..

3-8





ALPINE ARMORING INC.

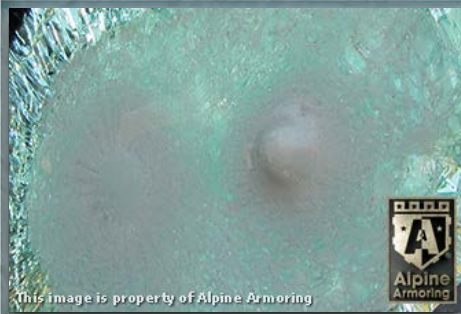
4
"no one protects you better."



Glass Armor

Minimum 40 mm thick glass/polycarbonate composite A9/B6+/NIJ III transparent armor installed on the vehicle.

4-1



Anti-Spall Layer

Inner-most anti-spall layer prevents glass and bullet fragments from penetrating into passenger cabin area and is free of any optical distortion and discoloration.

4-2



Multi-Hit Protection

All windows are capable of sustaining multiple hits while providing protection to passengers.

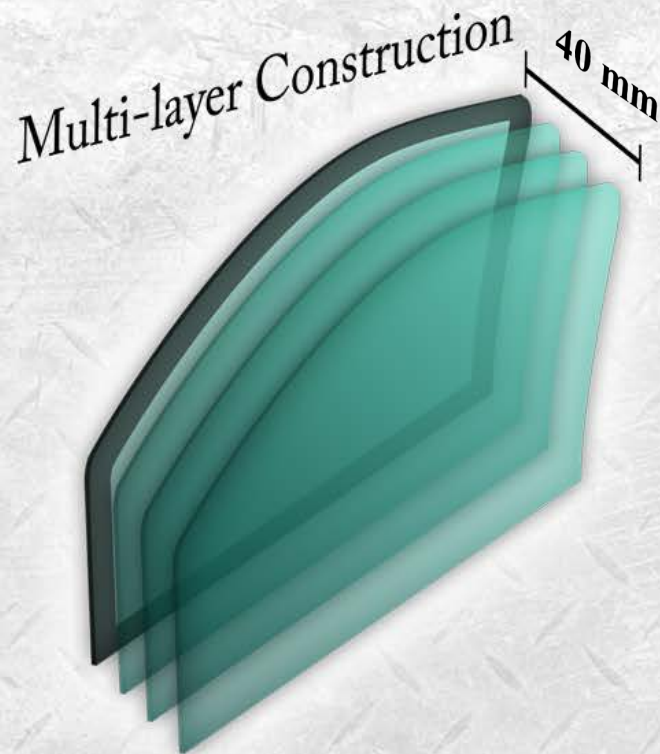
4-3



Front Power Windows

The front 2 windows are equipped with special custom-designed heavy duty actuator mechanism to allow for faster and quieter operation with maximum traveling distance.

4-4





ALPINE ARMORING INC.



"no one protects you better."



Ballistic Door Overlap

Each door is equipped with ballistic steel overlap with added custom bullet-catchers wrapped in high quality leather or vinyl.

5-1



Power Windows

Passenger and driver windows are powered and lower approximately 4 - 8 inches.

5-2



Rear Door Partition

The rear door partition is equipped with thick ballistic window.

5-3



Tailpipe Protection

The tailpipe features a special mesh that prevents the tailpipe from being sabotaged.

5-4

Upgraded Rotors

The vehicle's braking system (rotors & pads) will be upgraded to accommodate the added armor weight.

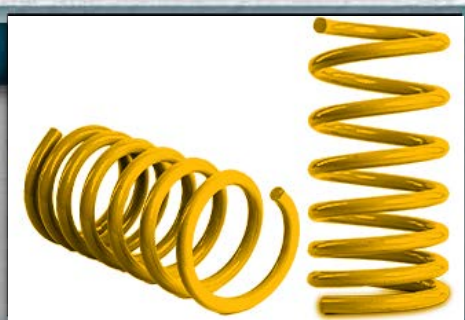
5-5



Upgrade Suspension

The vehicle's suspension (HD Coils) will be upgraded to accommodate the added armor weight, along with chassis reinforcement as deemed necessary .

5-6



Fuel Tank Protection

Fuel tank is protected by a ballistic steel box. Protects from two simultaneous grenades.

5-7



Run-Flat Inserts

Vehicle will be equipped with full-size run-flat inserts in each tire.

5-8





ALPINE ARMORING INC.

6
"no one protects you better."



This image is property of Alpine Armoring

Battery Protection

The battery is encased in a ballistic steel box to protect it.

6-1

Reinforced Door Hinges

Vehicle will be equipped with state-of-the-art Heavy-Duty (HD) hinges that have a built-in door stopper, preventing the use of retaining straps and door swing.

6-5



This image is property of Alpine Armoring



This image is property of Alpine Armoring

P.A./Multi-Siren System

Located on the center console. The multi-siren features standard siren tones, volume adjustment, and a public address system.

6-2

Rear Escape Hatch

Added center gunport and manual interior release access for rear hatch included.

6-6



This image is property of Alpine Armoring



This image is property of Alpine Armoring

Strobe Lights

Two white strobe lights are mounted in the front grill. Controlled using the P.A./siren control unit in the center console.

6-3

Rear Quarter Glass

The rear quarter panel of the vehicle is reinforced with ballistic glass

6-7



This image is property of Alpine Armoring



This image is property of Alpine Armoring

P.A./Multi-Siren System

Located on the center console. The multi-siren features standard siren tones, volume adjustment, and a public address system.

6-4

OEM Appearance

The exterior of the vehicle with the Armoring conversion will maintain the OEM appearance of the factory vehicle.

6-8



This image is property of Alpine Armoring



COMPLETED VEHICLE PHOTOS: EXTERIOR



ALPINE ARMORING INC.



"no one protects you better."





COMPLETED VEHICLE PHOTOS: EXTERIOR

ALPINE ARMORING INC.



8-1



8-2



8-3



8-4



COMPLETED VEHICLE PHOTOS: INTERIOR



ALPINE ARMORING INC.



"no one protects you better."



ALPINE ARMORING'S BALLISTIC CHART

WEAPONS	SPECS			LEVELS					BULLETS			NUMBER OF SHOTS	
	TYPE	CALIBER (mm)	CLASS	STANAG	UL	ALPINE	NIJ	CEN	MASS (g)	MATERIAL	VELOCITY		
	.38 Special	9 x 19	Handgun	—	1	A1	I,II,IIA	—	8.00	LCCJ	358 M/S	5	
	.357 Magnum	9 x 33	Handgun	—	2	A2	I,IIA	B1 & B3	10.20	JSP	430 M/S	5	
	.44 Magnum	11 x 33	Handgun	—	3	A3	IIIA	B4	15.60	LWC	440 M/S	5	
	MP5	9 x 19	SMG	—	6	A4	IIIA	B2	8.00	LCCJ	427 M/S	5	
	Shotgun	12 Gauge	Shotgun	—	3 & 4	A5	IIIA	SG2	28.30	SLUG	503 M/S	3	
	Tokarev	7.62 x 25	Handgun	—	—	A5	IIIA	—	5.50	LCSJ	488 M/S	5	
	Kalashnikov (AK-47)	7.62 x 39	Assault Rifle	—	—	A6	III	B5	9.70	SCCJ	732 M/S	5	
	Kalashnikov (AK-47 Military)	7.62 x 39 API BZ	Assault Rifle	II	—	A7	—	B5+	11.70	SCCJ	774 M/S	5	
	M16/AR-15	5.56 x 45 NATO SS109 5.56 x 45 NATO Ball	Assault Rifle	I	7	A8	IV	B5	4.00	SCCJ LCCJ	900 M/S 833 M/S	3	
	Winchester .308	7.62 x 51	Rifle	I	7	A9	III	B6	10.90	LCCJ	810 M/S	5	
	Remington 700 SPS	7.62 x 63 AP (.30-06) 7.62 x 51AP (WC core)	High-Power Rifle	III	5 & 8	A10	IV	B7-	10.80 8.40	AP	869 M/S 930 M/S	5	
	Dragunov	7.62 x 54R B32 API	Sniper Rifle	III	—	A11	IV+	B7+	10.04	SCCJ	854 M/S	1	
	.50 Cal	12.7 x 99	High-Power Rifle	IV	10	A12	—	—	45.00	CJ	908 M/S	1	

"no one protects you better"



UL Underwriters Laboratory, 752
NIJ National Institute of Justice, 0108.01
CEN European Standard
STANAG ... NATO's Standard (STANAG 4569)
ALPINE Alpine Armoring's Certified Standard

LCCJ Lead Core Copper Jacket
JSP Jacketed Soft Point
LWC Lead Wad Cutter
LCSJ Lead Core Steel Jacket
SCCJ Steel Core Copper Jacket
AP Armor Piercing
SG Shotgun

Shots (5) 11.4 cm Square Pattern (Corners & Center)
Shots (3) 11.4 cm Triangular Pattern
Velocity Minimum Measured Velocity
NIJ Rating .. Levels I, II, IIA, & IIIA (based on 1 of 2 required calibers of ballistic threat)



ALPINE ARMORING INC.





ALPINE ARMORING INC.



WARRANTY

ARMORED GMC YUKON DENALI XL

This vehicle, as proposed to the client in this quote, would be under Alpine Armoring's premium warranty covering both the OEM and the entire conversion parts including all armored parts and labor as well as all added accessories for one full year, effective the day of sale. Additional warranty for longer period is available upon request.

Alpine Armoring Inc. hereby honors this warranty in the United States and around the world against any and all related manufacturer's defects, including parts & labor.

MANAGEMENT AUTHORIZED
ALPINE ARMORING INC.
CHANTILLY, VIRGINIA, USA

DATE ISSUED

