



PIT-BULL VX

ARMORED SWAT TRUCK



Typically Armored to Level A9/B6+
Against 7.62x39, 5.56x45, 7.62x51, M193, & M80 ball

Can be armored to ANY level

ALPINE ARMORING INC.

www.alpineco.com



BASE VEHICLE SPECIFICATIONS

- MAKE:** Ford
- MODEL:** F-550 Pit-Bull VX®
- YEAR:** Brand New
- ENGINE:** 6.7L V8 Turbo-diesel (High Sulfur)
- POWER:** 300 hp @ 2,800 rpm
- TRANSMISSION:** 5-Speed Automatic
- COLOR:** Matte Black
- INTERIOR:** Vinyl & ballistic nylon upholstery
- SEATING:** 2 + 8 crew
- ARMORED WEIGHT:** 16,600 lbs. (7,530 kg.)



Wheelbase: 141 in. (358 cm)

Length: 240 in. (609 cm)



Height: 110 in. (279 cm)



Width: 96 in. (244 cm)

Available in both U.S. and export versions



GENERAL ARMORING SPECIFICATIONS

A. Protection at **Level A9/B6+**, against high power rifles including 7.62x39, 5.56x45, 7.62x51, M193, & M80 ball

B. **Opaque Armor** (see pages 4-5)

- Ballistic steel used throughout entire vehicle, including the frame
- Everything from the floor to the battery and fuel tank are protected
- All doors have ballistic steel overlaps

C. **Transparent Armor** (see page 6)

- 40 mm multi-hit certified ballistic glass/polycarbonate
- Anti-spall layer
- Multi-layered design for maximum protection

D. **Additional Features** (see pages 7-8)

- P.A./Multi-siren system
- Strobes lights
- Run-flat wheel inserts installed
- Tailpipe protection
- Suspension and tire upgrades
- Independent rear A/C system
- Heavy-duty bull bar
- Remote controlled GoLights
- Multiple gun ports and viewing windows
- Exterior running boards and hand rails





DETAILED ARMORING SPECIFICATIONS

OPAQUE ARMOR

B. Protection at **Level A9/B6+**, against high power rifles including: **7.62x39, 5.56x45, 7.62x51, M193, & M80 ball**



Firewall

Ballistic steel firewall provides protection up front



Roof

Roof is lined with ballistic steel at an angle



Floor

Entire floor is lined with ballistic steel



Doors

All doors are lined with ballistic steel



Armor Overlaps

Overlaps are used for all doors and windows



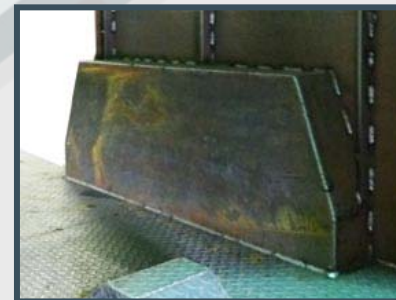
Heavy Duty Hinges

Custom hinges that will withstand the weight of the armored doors



Engine Bay Protection

The body panels that surround the engine bay are constructed out of ballistic steel



Wheel Wells

Front and rear wheel wells are lined with ballistic steel





DETAILED ARMORING SPECIFICATIONS

OPAQUE ARMOR



Frame Construction

Along with the body panels, the frame is constructed out of ballistic steel



Modified Glass Anchoring

Uses ballistic steel to provide enhanced blast survivability



Radiator Protection

A ballistic steel shroud is installed in front of the radiator



Fuel Tank Protection

Fuel tank is encased in ballistic steel



Armored Turret (optional)

Rotatable armored turret with armored hatch



Escape Hatches

Two escape hatches are built into the rear section of the roof



Rear Door

Featuring a single rear door constructed out of ballistic steel





DETAILED ARMORING SPECIFICATIONS

TRANSPARENT ARMOR

C. All original glass is removed & replaced with NIJ certified multi-layered ballistic glass/polycarbonate



Glass Thickness
40 mm thick glass/polycarbonate



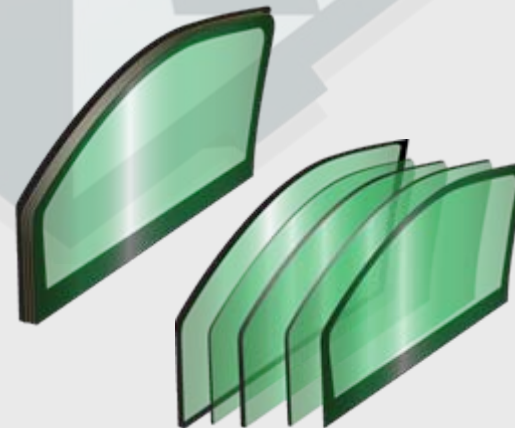
Multi-hit Protection
All windows are capable of sustaining multiple hits while providing protection to passengers



Anti-Spall
Anti-spall layer prevents glass fragments from penetrating into passenger cabin



Anchored Windows
All ballistic windows are anchored using ballistic steel cases



Layered Design
Layered glass and composites protect against multiple hits, providing more time to escape.
Multi-Layered High Optics
Factory tinted Glass/Polycarbonate

"no one protects you better"





DETAILED ARMORING SPECIFICATIONS

ADDITIONAL FEATURES

D. Other features included are pictured below



P.A./Multi-Siren System

Features exterior mounted speaker/siren. Interior dash-mounted quick select siren and microphone



Strobe Lights

Roof-mounted aerodynamic red/blue strobe lights



Run-Flat Inserts

Four (4) run-flats installed. Rated for 50km/h (30 miles @ 30mph)



Tailpipe Protection

Protects exhaust pipe from being sabotaged



Suspension Upgrades

All springs and shocks are replaced with upgraded models



Rear A/C System

Fully independent A/C system is installed in the rear of the vehicle



DETAILED ARMORING SPECIFICATIONS

ADDITIONAL FEATURES Continued



Heavy-Duty Bull Bar

Constructed using ballistic steel and integrated directly into the frame of the vehicle



GoLights

Remote controlled GoLight spotlights are mounted on roof



Gun Ports

7 gun ports are built into the doors and under windows



Viewing Windows

There are 2 viewing windows on each side and 2 on the rear door



Exterior Hand Rails

Installed along the exterior of the vehicle



Exterior Running Boards

Installed along the exterior of the vehicle



GENERAL ARMORING SPECIFICATIONS

GLASS

- 40mm thick
- Anti-spall shield layer
- Multi-hit protection

DOORS

- Four (4) side doors
- Single rear door is 43 inches wide
- Steel door pillars
- Custom heavy-duty door hinges
- Exterior paddle style handles for rapid entry/exit
- Grab handles/pull bars on interior/exterior of all doors
- 4-point manual deadbolt internal locking system

ELECTRICAL AND LIGHTING

- All wires are loomed and clearly marked
- 3 switched red & white dome lights
- 2 roof mounted GoLights with toggle
- P.A. / multi-siren system
- Red & Blue Strobe Lights at front, sides, and back

SEATING

- OEM Driver & Passenger seats
- OEM 3-point seat belts (driver/passenger)
- Rear bench seating and 2 point seatbelts
- Bench seats lift up for additional storage
- Fold down modular seat behind passenger seat
- Total seating for ten (10) personnel

CLIMATE CONTROL

- Front cab utilizes OEM climate control with A/C
- Rear independent high output A/C and heating system
- Smoke extraction/ventilation fans

INTERIOR FEATURES

- Insulated dual-wall construction
- Rubber floor in front cab compartment
- Anti slip heavy duty black textured rear floor

EXTERIOR FEATURES

- Front RAM bumper mounted to frame
- Grab handles and 12" wide foot rails
- Dual door roof escape hatches
- Roof turret hatch (turret not included)

WHEELS AND TIRES

- Rims: 20"x11" forged aluminum
- Tires: Michelin XZL 335/80R20 tubeless
- Run-flats installed on all wheels

STANDARD FEATURES AND ACCESSORIES

- First aid kit and fire extinguisher in front cab
- Rear pintle hook installed below foot rail
- Ballistic fuel tank armoring
- Lockable fuel door
- Reinforced door pillars and posts
- Tailpipe protection
- Suspension components are reinforced





COMPLETED VEHICLE

EXTERIOR-INTERIOR PHOTOS





COMPLETED VEHICLE

EXTERIOR-INTERIOR PHOTOS





ALPINE'S BALLISTIC CHART

ALPINE ARMORING INC.

LEVEL	CALIBER	TYPE	WEAPON	BULLET	STANDARDS	MASS (gram)	MATERIAL	VELOCITY m's (ft's) (a)	SHOTS	UL (b)	NIJ (f)	CEN	DIN
A1	9 x 19 mm	Handgun (Pistol)		8	LCCJ	358 (1,175)	5 (e)	1	I, IIA, II	—	1		
A2	.357 Magnum	Handgun (Pistol)		10.2	JSP	430 (1,410)	5 (e)	2	IIA, II	B1, B3	2		
A3	.44 Magnum	Handgun (Revolver)		15.6	LWC	440 (1,443)	5 (e)	3	IIIA	B4	3		
A4	9 x 19 mm	Sub-machinegun		8	LCCJ	427 (1,400)	5 (e)	6	IIIA	B2	—		
A5	7.62 x 25 mm	Handgun (Tokorev)		5.5	LCSJ	488 (1,600)	5 (e)	—	—	—	—		
A6	7.62 x 39 mm	AK-47 (HP Rifle)		9.7	SCCJ (d)	732 (2,400)	5 (e)	—	—	—	—		
A7	.30 - 06	HP Rifle		11.7	JSP	774 (2,540)	5 (e)	4	—	—	—		
A8	5.56 x 45 mm	HP Rifle (M-16)		3.6	LCCJ (d)	991 (3,250)	5 (e)	7	—	B5	4		
A9	7.62 x 51 mm	HP Rifle / M193		9.7	LCSJ (d)	838 (2,750)	5 (e)	5, 8	III	B6	5		
A10	.30 - 06	HP Rifle		10.8	AP (d)	869 (2,850)	3 (e)	—	IV	B7	—		
SG	12 Gauge	Shotgun		28.3	Slug	503 (1,650)	3 (c)	SG	—	SG2	SG2		

- UL:** Underwriters Laboratory, 752
- NIJ:** National Institute of Justice, 0108.01
- CEN:** European Standard
- DIN:** German Standards, 52290
- STANAG:** NATO

- LCCJ:** Lead Core Copper Jacket
- JSP:** Jacketed Soft Point
- LWC:** Lead Wad Cutter
- LCSJ:** Lead Core Steel Jacket
- SCCJ:** Steel Core Copper Jacket
- AP:** Armor Piercing
- SG:** Shotgun

- (A)** Minimum Measured Velocity
- (B)** Ambient Temperature Only
- (C)** 11.4 cm Triangular Pattern
- (D)** Military Ammunition, All Other Commercial
- (E)** Corners & Center of 11.4 Square Pattern
- (F)** Levels I, II, IIA & IIIA based on 1 of 2 Required Calibers of Ballistic Threat

"no one protects you better"





WARRANTY

PIT-BULL VX SWAT TRUCK

The vehicle above is under Alpine's premium warranty covering all its armored parts and labor as well as all added accessories for one full year, effective the date of final delivery to the client.

Alpine Armoring Inc. hereby honors this warranty, in the United States and worldwide, against any and all related manufacturer's defects.

MANAGEMENT AUTHORIZED
ALPINE ARMORING INC.
HERNDON, VIRGINIA, USA

DATE SIGNED