



ARMORED BULLDOG X[®] SWAT TRUCK

Typically Armored to Level A9/B6+ Against 7.62x39, 5.56x45, 7.62x51, M193, & M80 ball. Can be Armored to Any Level.



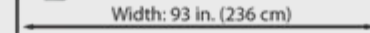
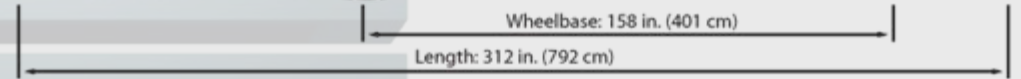
ALPINE ARMORING INC.

www.alpineco.com



BASE VEHICLE SPECIFICATIONS

- MAKE:** Freightliner
- MODEL:** S2 106 Bulldog X®
- YEAR:** Brand New
- ENGINE:** 6.4L V8 Diesel MB 900
- POWER:** 210 hp @ 2,200 rpm
- TRANSMISSION:** Allison 2100 HS Automatic
- COLOR:** Client's choice
- INTERIOR:** Vinyl and nylon upholstery
- SEATING:** 2 + 14 crew
- ARMORED WEIGHT:** 26,000 lbs. (11,793 kg.)



"no one protects you better"





GENERAL ARMORING SPECIFICATIONS

- A. Protection at **Level A9/B6+**, against high power rifles including **7.62x39, 5.56x45, 7.62x51, M193, & M80 ball**
- B. Opaque Armor (*see page 4*)
 - 6 & 8 mm certified ballistic steel used throughout entire vehicle
 - Everything from the floor to the battery and fuel tank are protected
- C. Transparent Armor (*see page 5*)
 - 40 mm multi-hit certified ballistic glass/polycarbonate
 - Anti-spall layer
- D. Door Armor (*see page 6*)
 - Overlap for seamless protection
 - Fully reinforced with heavy-duty hinges and locking mechanisms
- E. Interior / Exterior / Structure Armor (*see page 7*)
 - Built around a ballistic steel frame
 - Features seven (7) viewing windows and five (5) gun ports
 - Roof access, gear storage, and a heavy-duty bull bar
- F. Audio/Visual Alert Systems (*see page 8*)
 - Police bar style roof-mounted strobe lights
 - Remote controlled GoLights
 - P.A./Multi-siren system
- G. Additional Features (*see page 9*)
 - Exterior grab handle rails, running boards, and low profile rear steps
 - Six (6) run-flat wheel inserts installed
 - Rear cabin independent A/C system and exhaust fans
 - Heavy-duty jack included





DETAILED ARMORING SPECIFICATIONS

OPAQUE ARMOR

B. Certified 6 & 8 mm ballistic steel is used throughout the entire vehicle

- Additional ballistic steel armoring for the battery, ECM, and fuel tank
- All doors pillars and posts are reinforced with ballistic steel



Certified Ballistic Steel

Protection at **Level A9/B6+**, against high power rifles including: 7.62x39, 5.56x45, 7.62x51, M193, & M80 ball



Body Construction

The entire body of the vehicle, inside and out, is constructed using ballistic steel, providing uncompromised protection



Ballistic Steel Floor

Protection against mine and DM51 fragmentation grenades



Armor Overlap

Provides seamless protection. Used with all doors, windows, and ports



Engine Bay

Ballistic steel protects the entire engine bay as well as the radiator



Ballistic Steel Roof

The roof is constructed using ballistic steel





DETAILED ARMORING SPECIFICATIONS

TRANSPARENT ARMOR

C. All original glass is removed & replaced with NIJ certified multi-layered ballistic glass/polycarbonate



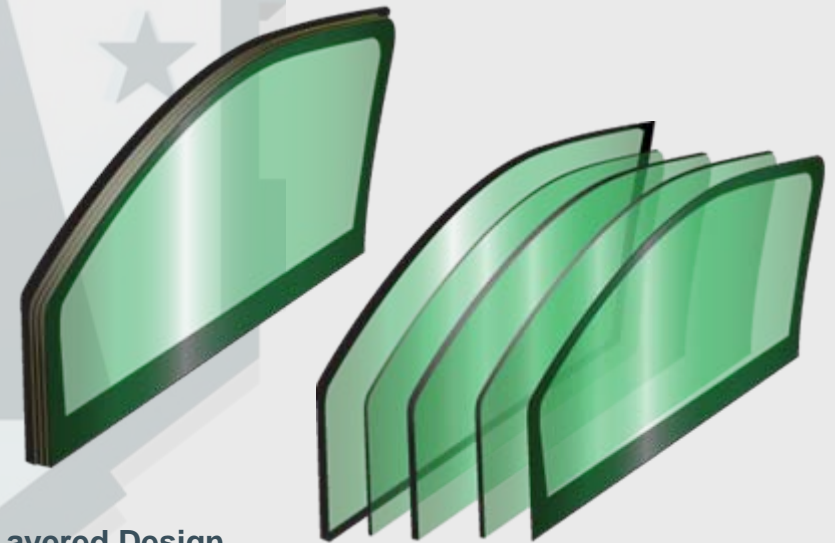
Glass Thickness
40 mm thick glass/polycarbonate



Multi-hit Protection
All windows are capable of sustaining multiple hits while providing protection to passengers



Anti-Spall
Anti-spall layer prevents glass fragments from penetrating into passenger cabin



Layered Design
Layered glass and composites protect against multiple hits, providing more time to escape.

Multi-Layered High Optics
Factory tinted Glass/Polycarbonate





DETAILED ARMORING SPECIFICATIONS

DOORS

D. All doors are made with ballistic steel and 40 mm ballistic windows, providing multi-hit protection



Front Doors

Front doors feature heavy duty locks



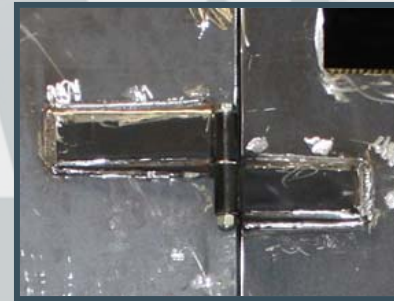
Rear Doors

Rear features a large single door for easy entrance and exit



Door Overlaps

All door overlaps protect against penetration from every angle



Heavy-Duty Hinges

Ensure smooth and reliable door operation and compensate for the weight of the armoring



Heavy-Duty Door Locks

All doors are equipped with custom heavy-duty locks





DETAILED ARMORING SPECIFICATIONS

INTERIOR / EXTERIOR / STRUCTURE ARMOR

E. Built around a ballistic steel frame and features viewing windows and gun ports for all occupants



Frame Construction

Ballistic steel frame provides extra overlap for all exterior plates and ensures structural rigidity



Rear Seating

Seats up to 14 people



Bull Bar

Heavy-duty ballistic steel bull bar is integrated directly into the frame



Rear Windows and Gun Ports

Total of seven (7) viewing windows with dedicated gun ports under each (includes rear door)



Roof Hatch

Integrated roof hatch in the rear cabin with ladder, provides easy roof access



Turret

Rotating ballistic steel turret is mounted to the roof



Rear Cabin Storage Locker

Features two (2) 25" x 72" storage lockers



Rear Seating Storage

Rear cabin features gear storage under each seat cushion





DETAILED ARMORING SPECIFICATIONS

AUDIO/VISUAL ALERT SYSTEMS

F. The Pit-Bull FX is equipped all necessary public alert systems



Roof-Mounted Lighting

All alert lighting is mounted on the roof of the driver's cabin



GoLight Search Lights

Roof-mounted remote controlled GoLight search lights provide full exterior illumination capabilities (set of two)



GoLight Control

Each GoLight has its own remote control that is mounted on the dashboard



P.A./Multi-Siren System

Features exterior mounted speaker/siren. Interior dash-mounted quick select siren and microphone





DETAILED ARMORING SPECIFICATIONS

ADDITIONAL FEATURES

G. Other features included are pictured below



Rear Cabin A/C System
Rear cabin features a fully independent A/C system



Air Flow
Two exhaust fans are installed in the rear cabin to ensure optimal air flow



Exterior Grab Handle Rails
Built-in exterior grab handles allow for quick arrival and deployment



Exterior Running Boards
Compliments the exterior grab handles, allowing personnel to ride on the outside



Run-Flat Inserts
Six (6) run-flats installed



Heavy-Duty Jack
Heavy-duty mechanical jack is included. Mounted behind front passenger seat





GENERAL SPECIFICATIONS

OEM FEATURES

- Original dashboard and instruments
- Front climate control with A/C and heater
- All OEM manuals/information included

OPAQUE

- Armor overlap for all doors/windows/ports
- Battery and ECM armor protection
- Ballistic steel fuel tank protection
- Ballistic steel floor (grenade/mine protection)
- Ballistic steel frame/construction

GLASS

- 40 mm glass/polycarbonate construction
- Anti-spall shielding layer
- Multi-hit protection

DOORS

- Overlap protection on doorframes
- Reinforced heavy-duty door hinges
- Heavy-duty door lock mechanisms

INTERIOR

- Driver and passenger bucket seats
- Rear seating for fourteen (14)
- Rear cabin viewing windows (x7)
- Rear cabin gun ports (x4)
- Rear cabin overhead lighting (red/white)
- Rear cabin roof access hatch
- Roof access ladder
- Gear storage under driver/passenger seats
- Gear storage under rear seat cushions
- Two (2) 25" x 72" rear storage compartments

AUDIO/VISUAL ALERT SYSTEMS

- Roof-mounted LED police strobe bar
- Remote control GoLight spotlights
- P.A./Multi-siren system with interface

ADDITIONAL FEATURES & SECURITY

- Full size heavy-duty front bumper bull bar
- Exterior side running boards
- Exterior rear running board
- Full-length exterior handle rails
- Low-profile rear step for quick access
- Rear cabin independent A/C and heating
- Six (6) run-flat wheel inserts installed





COMPLETED VEHICLE

EXTERIOR-INTERIOR PHOTOS



"no one protects you better"





ALPINE'S BALLISTIC CHART

ALPINE ARMORING INC.

LEVEL	CALIBER	TYPE	WEAPON	BULLET	STANDARDS	MASS (gram)	MATERIAL	VELOCITY m's (ft's) (a)	SHOTS	UL (b)	NIJ (f)	CEN	DIN
A1	9 x 19 mm	Handgun (Pistol)		8	LCCJ	358 (1,175)	5 (e)	1	I, IIA, II	—	1		
A2	.357 Magnum	Handgun (Pistol)		10.2	JSP	430 (1,410)	5 (e)	2	IIA, II	B1, B3	2		
A3	.44 Magnum	Handgun (Revolver)		15.6	LWC	440 (1,443)	5 (e)	3	IIIA	B4	3		
A4	9 x 19 mm	Sub-machinegun		8	LCCJ	427 (1,400)	5 (e)	6	IIIA	B2	—		
A5	7.62 x 25 mm	Handgun (Tokorev)		5.5	LCSJ	488 (1,600)	5 (e)	—	—	—	—		
A6	7.62 x 39 mm	AK-47 (HP Rifle)		9.7	SCCJ (d)	732 (2,400)	5 (e)	—	—	—	—		
A7	.30 - 06	HP Rifle		11.7	JSP	774 (2,540)	5 (e)	4	—	—	—		
A8	5.56 x 45 mm	HP Rifle (M-16)		3.6	LCCJ (d)	991 (3,250)	5 (e)	7	—	B5	4		
A9	7.62 x 51 mm	HP Rifle / M193		9.7	LCSJ (d)	838 (2,750)	5 (e)	5, 8	III	B6	5		
A10	.30 - 06	HP Rifle		10.8	AP (d)	869 (2,850)	3 (e)	—	IV	B7	—		
SG	12 Gauge	Shotgun		28.3	Slug	503 (1,650)	3 (c)	SG	—	SG2	SG2		

- UL:** Underwriters Laboratory, 752
- NIJ:** National Institute of Justice, 0108.01
- CEN:** European Standard
- DIN:** German Standards, 52290
- STANAG:** NATO

- LCCJ:** Lead Core Copper Jacket
- JSP:** Jacketed Soft Point
- LWC:** Lead Wad Cutter
- LCSJ:** Lead Core Steel Jacket
- SCCJ:** Steel Core Copper Jacket
- AP:** Armor Piercing
- SG:** Shotgun
- (A)** Minimum Measured Velocity
- (B)** Ambient Temperature Only
- (C)** 11.4 cm Triangular Patter
- (D)** Military Ammunition, All Other Commercial
- (E)** Corners & Center of 11.4 Square Pattern
- (F)** Levels I, II, IIA & IIIA based on 1 of 2 Required Calibers of Ballistic Threat

"no one protects you better"





WARRANTY

BULLDOG X® SWAT TRUCK

The vehicle above is under Alpine's premium warranty covering all its armored parts and labor as well as all added accessories for one full year, effective the date of final delivery to the client.

Alpine Armoring Inc. hereby honors this warranty, in the United States and worldwide, against any and all related manufacturer's defects.

MANAGEMENT AUTHORIZED
ALPINE ARMORING INC.
HERNDON, VIRGINIA, USA

DATE SIGNED

