



**ARMORED MB S500
GRAND EDITION**



**This vehicle is available
for immediate delivery**

ALPINE ARMORING INC.

www.alpineco.com

BASE VEHICLE SPECIFICATIONS

MAKE: Mercedes-Benz
MODEL: S500
VIN: WDBGA51G9XA419942
YEAR: 1999
ENGINE: 5.0 L. V8 Gasoline
POWER: 305 hp @ 3,900 rpm
TRANSMISSION: 5-Speed Automatic
COLOR: Black
INTERIOR: Tan Leather
SEATING: 2 + 3
WEIGHT: 6,000 lbs. (Armored)



Width: 74 in.



Height: 58.5 in.



Wheelbase: 123.6 in.

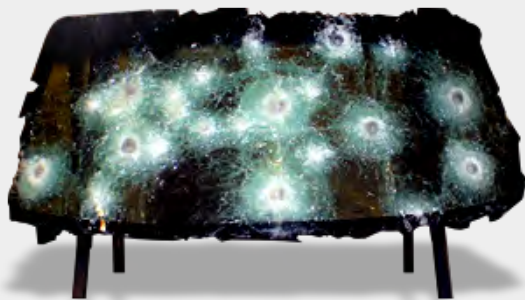
Length: 205.2 in.

Original Vehicle's [Title](#)

OEM's [Window Sticker](#)

GENERAL ARMORING SPECIFICATIONS

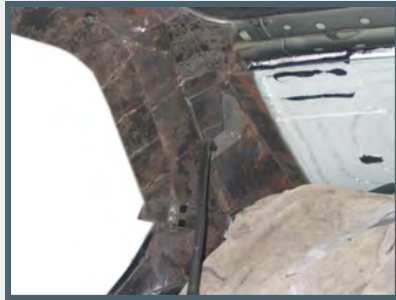
- A. Protection at **Level A9/B6+**, against high power rifles including **7.62x39, 5.56x45, 7.62x51, M193, & M80 ball**
- B. 4 mm ballistic steel shell installed between interior and exterior frame/chassis (*see page 4*)
- Floor has Anti-mine protection including DM51 grenade/fragmentation using ballistic composite materials
 - Roof (at an angle) using special & lighter ballistic steel for a lower center of gravity
 - Patented designed armoring for firewall and wheel wells for added protection
- C. All original glass is removed and replaced with NIJ certified multi-layered ballistic glass/polycarbonate (*see page 5*)
- D. Additional armoring (*see page 6*)
- Fuel tank and battery
- E. Included Options (*see page 6*)
- Power driver and passenger windows
 - A complete set of four (4) high grade safety security bands



DETAILED ARMORING SPECIFICATIONS

OPAQUE AREAS

B. Certified ballistic steel shell installed between interior and exterior frame/chassis



Structure

Ballistic steel is used to provide the best protection possible



Doors

All doors are ballistic steel lined



Door Overlaps

All door overlaps (extra padding used) protect against penetration from every angle



Firewall

Ballistic steel firewall provides protection up front



Roof

At a minimum 60 degree angle, using special & lighter ballistic steel for a lower center of gravity



Floor

Protection below with ballistic steel

DETAILED ARMORING SPECIFICATIONS

TRANSPARENT AREAS

C. All original glass is removed & replaced with NIJ certified multi-layered ballistic glass/polycarbonate



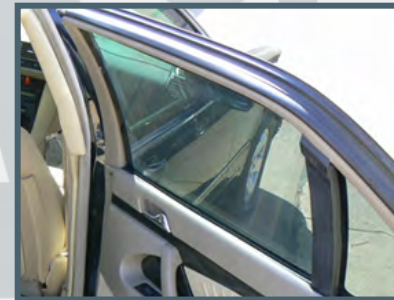
Window Thickness
40 mm thick glass/polycarbonate



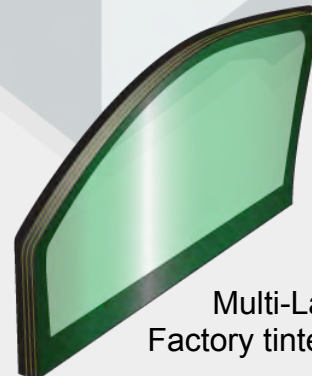
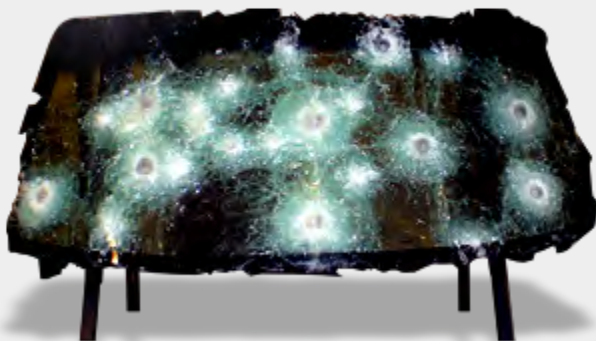
Multi-hit Protection
All windows are capable of sustaining multiple hits while providing protection to passengers



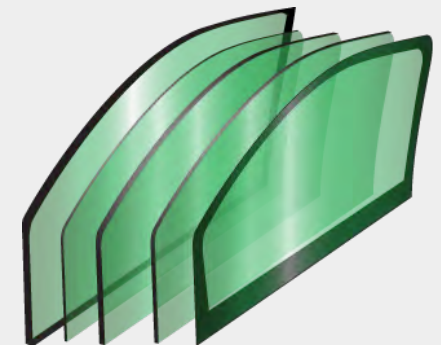
Anti-Spall
Anti-spall layer prevents glass fragments from penetrating into passenger cabin



Layered Design
Layered glass and composites protect against multiple hits, providing more time to escape



Multi-Layered High Optics
Factory tinted Glass/Polycarbonate



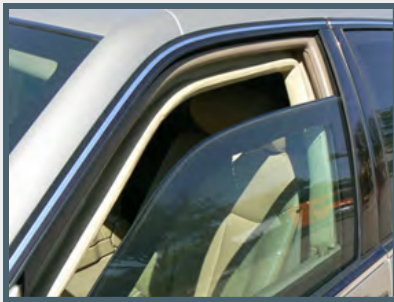
DETAILED ARMORING SPECIFICATIONS

ADDITIONAL FEATURES

D. Additional armoring includes fuel tank, battery, and engine computer protection



E. Included options



Power Windows

Driver and passenger windows are powered (open approx. 4 in.)



Tire Protection

Complete set of four (4) high grade safety security bands

GENERAL OEM SPECIFICATIONS

- Automatic Rear-Axle Level Control
- AM/FM Stereo/CD Player
- Electronic Auto Temp Control
- Electrochromic Mirror
- Heated Power Front Seats
- Power Tilt, Sliding Glass Sunroof
- Head Restraints w/ 3-Position
- Heated Rear Seats
- Activated Charcoal Filter
- 11-Speaker Bose Sound System
- Premium Sound System
- Activated Charcoal Filter
- Leather Upholstery
- 16 inch Aluminum Wheels
- Front Fog Lamps
- Headlight Wipers
- Xenon High Intensity Discharge Headlamps
- ABS and Brake Assist
- Automatic Slip Control (ASR)



[OEM Window Sticker](#)



COMPLETED VEHICLE
EXTERIOR-INTERIOR PHOTOS



ALPINE'S BALLISTIC CHART

ALPINE ARMORING INC.

LEVEL	CALIBER	TYPE	MASS (gram)	MATERIAL	VELOCITY m/s (ft/s) (A)	SHOTS	UL (B)	NIJ (F)	CEN	DIN
A1	9 x 19 mm	Handgun (Pistol)	8	LCCJ	358 (1,175)	5 (e)	1	I, IIA, II	—	1
A2	.357 Magnum	Handgun (Pistol)	10.2	JSP	430 (1,410)	5 (e)	2	IIA, II	B1, B3	2
A3	.44 Magnum	Handgun (Revolver)	15.6	LWC	440 (1,443)	5 (e)	3	IIIA	B4	3
A4	9 x 19 mm	Sub-machinegun	8	LCCJ	427 (1,400)	5 (e)	6	IIIA	B2	—
A5	7.62 x 25 mm	Handgun (Tokorev)	5.5	LCSJ	488 (1,600)	5 (e)	—	—	—	—
A6	7.62 x 39 mm	AK-47 (HP Rifle)	9.7	SCCJ (d)	732 (2,400)	5 (e)	—	—	—	—
A7	.30 - 06	HP Rifle	11.7	JSP	774 (2,540)	5 (e)	4	—	—	—
A8	5.56 x 45 mm	HP Rifle (M-16)	3.6	LCCJ (d)	991 (3,250)	5 (e)	7	—	B5	4
A9	7.62 x 51 mm	HP Rifle / M193	9.7	LCSJ (d)	838 (2,750)	5 (e)	5, 8	III	B6	5
A10	.30 - 06	HP Rifle	10.8	AP (d)	869 (2,850)	3 (e)	—	IV	B7	—
SG	12 Gauge	Shotgun	28.3	Slug	503 (1,650)	3 (c)	SG	—	SG2	SG2

UL: Underwriters Laboratory, 752
NIJ: National Institute of Justice, 0108.01
CEN: European Standard
DIN: German Standards, 52290
STANAG: NATO

LCCJ: Lead Core Copper Jacket
JSP: Jacketed Soft Point
LWC: Lead Wad Cutter
LCSJ: Lead Core Steel Jacket
SCCJ: Steel Core Copper Jacket
AP: Armor Piercing
SG: Shotgun
(A) Minimum Measured Velocity
(B) Ambient Temperature Only
(C) 11.4 cm Triangular Patter
(D) Military Ammunition, All Other Commercial
(E) Corners & Center of 11.4 Square Pattern
(F) Levels I, II, IIA & IIIA based on 1 of 2
 Required Calibers of Ballistic Threat

"no one protects you better."





WARRANTY

★ MERCEDES-BENZ S500 ★

VIN: WDBG A51 G9XA419942

The vehicle above is under Alpine's premium warranty covering all its armored parts and labor as well as all added accessories for one full year, effective the date of final delivery to the client.

Alpine Armoring Inc. hereby honors this warranty, in the United States and worldwide, against any and all related manufacturer's defects.

MANAGEMENT AUTHORIZED
ALPINE ARMORING INC.
HERNDON, VIRGINIA, USA

DATE SIGNED

Original Vehicle's [Title](#)

OEM's [Window Sticker](#)





Certificate of Ballistic Standards

MERCEDES-BENZ S500

VIN: WDBGA51G9XA419942

The vehicle above is hereby certified according to level **A9/B6+**. The materials, both opaque and transparent (including ballistic hardened steel, all glass and/or any special composite material), used in armoring this vehicle have been tested and certified by an authorized independent laboratory.

CONVERSION: Entire passenger area (Transparent and Opaque), roof, and especially floor, plus firewall and wheel wells. Battery, computer module and fuel tank are also protected.

- Full multi-hit (5 rounds) protection against high power rifles (A9/B6+), including **AK47, 7.62x39, 5.56x45, 7.62x51, M193 & M80 ball**
- All original glass is removed and replaced with high quality no spall NIJ tested Multi-layered ballistic polycarbonate/glass
- All opaque materials surrounding the passenger area are replaced with hardened ballistic NIJ certified steel
- All overlap areas are protected separately with multilayered padding on both sides
- Protection for the floor (against mines/fragmentation including two DM51 anti-personnel hand grenade) using ballistic composite
- Protection for the roof (at an angle) using special ballistic composite
- Fuel tank will be ballistically and independently protected all around
- Separate ballistic protection for the battery, black box/computer module
- Patented design armoring for firewall and all wheel wells

Management
Alpine Armoring Inc.
Herndon, Virginia, USA

Date