



## **ARMORED ESCALADE ESV**

**Professionally Armored to Level A9/B6+  
7.62x39, 5.56x45, 7.62x51, M193, & M80 ball**



**This vehicle is available  
for immediate delivery**

# **ALPINE ARMORING INC.**

**[www.alpineco.com](http://www.alpineco.com)**

## BASE VEHICLE SPECIFICATIONS

**MAKE:** Cadillac

**MODEL:** Escalade ESV

**VIN:** 1GYFK26259R257098

**YEAR:** 2009 (This Car is Brand New)

**ENGINE:** 6.2 L. V8 Vortec Gasoline

**POWER:** 403 hp @ 5,700 rpm

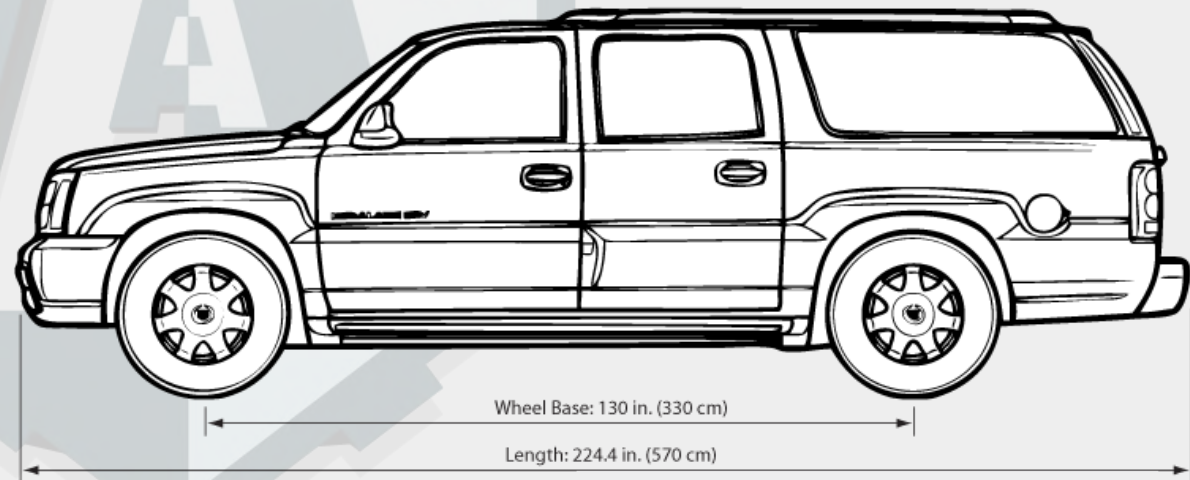
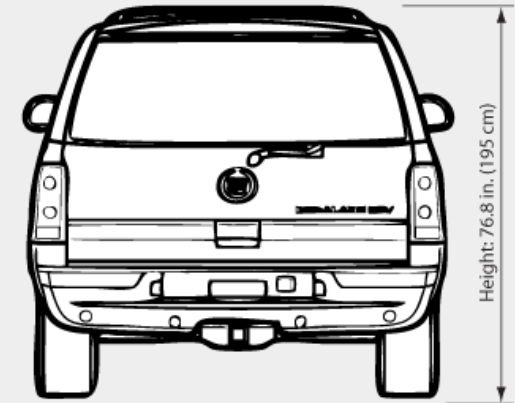
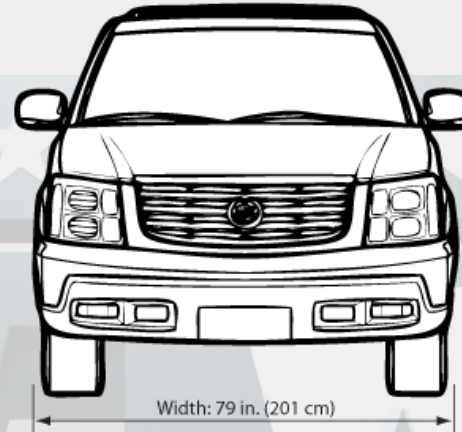
**TRANSMISSION:** 6-Speed Automatic

**COLOR:** Black Raven

**INTERIOR:** Black Leather

**SEATING:** 2 + 2 + 2

**WEIGHT:** 8,760 lbs. (Armored)



Original Vehicle's [Title](#)

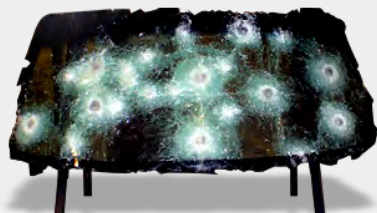
OEM's [Window Sticker](#)

## GENERAL ARMORING SPECIFICATIONS

- A. Protection at **Level A9/B6+**, against high power rifles including **7.62x39, 5.56x45, 7.62x51, M193, & M80 ball** (see page 4)
- B. All original glass is removed and replaced with NIJ certified multi-layered ballistic glass/polycarbonate (see page 5)
- C. 4 mm ballistic steel shell installed between interior and exterior frame/chassis (see page 6)
- D. Floor has Anti-mine protection including DM51 grenade/fragmentation using ballistic steel (see page 7)
- E. Roof (at an angle) using ballistic steel for maximum protection (see page 7)
- F. Patented designed armoring for firewall and wheel wells for added protection (see page 7)
- G. Additional areas of armoring are the fuel tank, battery compartment, and engine computer module (see page 8)
- H. A complete set of four (4) high grade run-flats installed (see page 8)

## OPTIONAL EQUIPMENT (included)

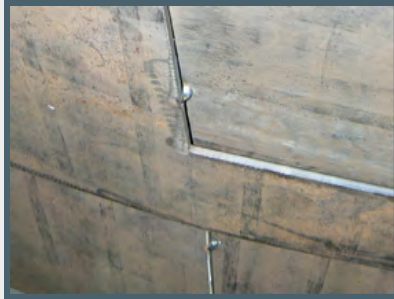
- I. Driver and front passenger side power windows (window drops by approx. 4 in.) (see page 5)
- J. P.A./Multi-siren system built-in, accessible to the driver (see page 9)
- K. Intercom system (see page 9)
- L. LED strobe lights (see page 9)
- M. Tailpipe protection (see page 9)



## DETAILED ARMORING SPECIFICATIONS

### OPAQUE AREAS

A. Protection at **Level A9/B6+**, against high power rifles including: **7.62x39, 5.56x45, 7.62x51, M193, & M80 ball**



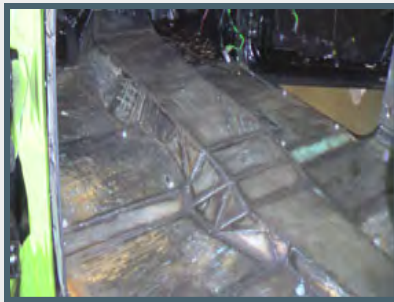
#### Structure

Ballistic steel is used to provide the best protection possible



#### Doors

All doors are ballistic steel lined



#### Floor

Protection below with ballistic steel



#### Firewall

Ballistic steel firewall provides protection up front



#### Full Protection

Ballistic steel lines the entire passenger cabin to provide you protection and peace of mind



#### Quality Craftsmanship

Using patented welding and fabrication methods, quality is guaranteed

## DETAILED ARMORING SPECIFICATIONS

### TRANSPARENT AREAS

B. All original glass is removed & replaced with NIJ certified multi-layered ballistic glass/polycarbonate



**Front Powered Windows**  
Drops approx. 4 in.



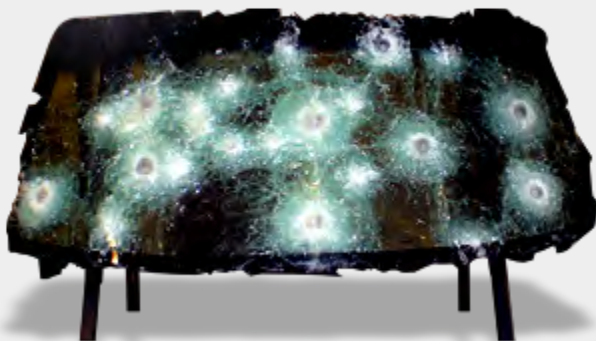
**Window Thickness**  
40 mm thick for maximum protection



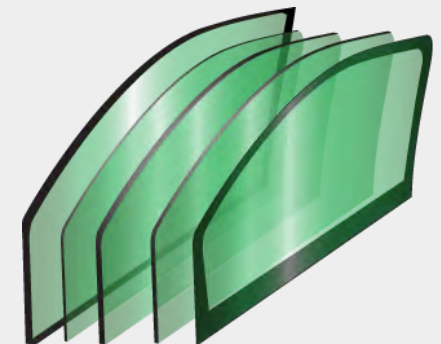
**Anti-Spall**  
Anti-spall layer prevents glass fragments from penetrating into passenger cabin



**Layered Design**  
Layered glass and composites protect against multiple hits, providing more time to escape



Multi-Layered High Optics  
Factory tinted Glass/Polycarbonate



## DETAILED ARMORING SPECIFICATIONS

### PASSENGER COMPARTMENT

C. 4 mm ballistic steel shell installed between interior and exterior frame/chassis



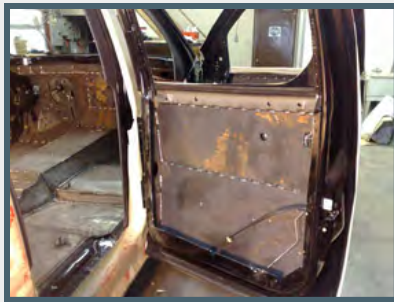
#### Door Overlaps

All door overlaps (extra padding used) protect against penetration from every angle



#### Structure

The entire interior structure is protected using ballistic material



#### Doors

Ballistic steel lines the inside of each door



#### Rear

Separate ballistic steel partition is created for the rear



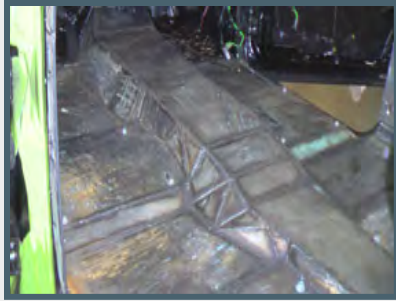
#### Full Coverage

Entire passenger compartment is lined with ballistic steel, ensuring your protection

**DETAILED ARMORING SPECIFICATIONS**

**FLOOR, FIREWALL, AND INTERIOR AREAS**

D. Floor: Anti-mine protection including DM51 grenade/fragmentation using composite materials and ballistic steel



**Floor**

Patented interior floor armoring design protects against mine and DM51 grenade attacks

E. Roof (at an angle) using ballistic steel for maximum protection



**Roof**

End-to-end coverage for maximum protection

F. Patented designed armoring for firewall and wheel wells for added protection



**Firewall**

Ballistic steel used to add protection to the firewall



**Wheel Wells**

For Additional Protection

## DETAILED ARMORING SPECIFICATIONS

### FUEL TANK & RUN-FLATS

- G. Additional areas of armoring are the fuel tank, battery compartment, and engine computer module
- Patented protection for sensitive components
  - Gas tank is protected externally
  - Engine computer module protection ensures vehicle systems function even in extreme situations



- H. A complete set of four (4) Run-Flats
- Installs around inside of wheel



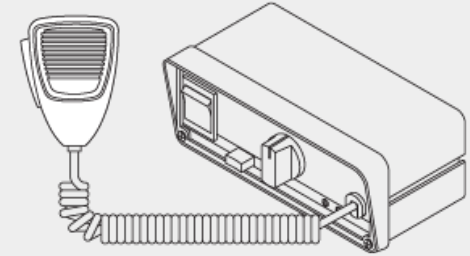
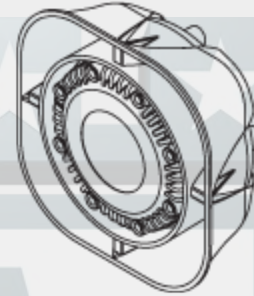
2 in. / 5.08 cm.



## OPTIONS

### P/A SYSTEM & MESH TAIL PIPE

- J. Built-in Public Address System with Multi-Mode Siren system (accessible by the driver)
  - Siren Activates via slide switch (PTT, push-to-talk switch on microphone overrides all siren functions)

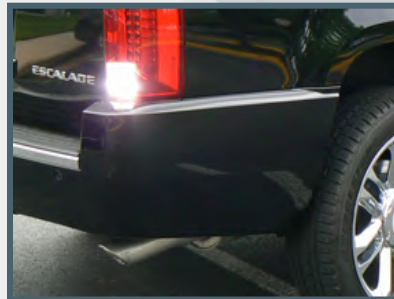
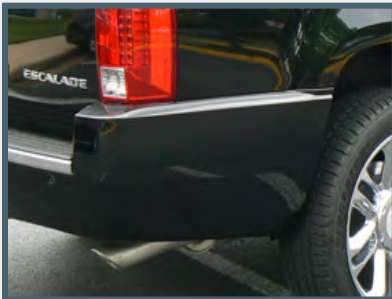


### K. Intercom System

- Accessible to driver. Activates using a push switch. External microphones hear what is outside vehicle and play through cabin sound system.



### L. Strobe Lights



### M. Tailpipe Protection



## GENERAL SPECIFICATIONS

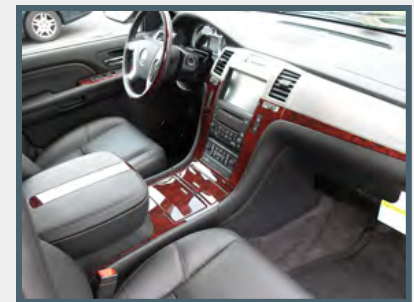
### COMFORT & CONVENIENCE

- 6 Disc CD/DVD/MP3 Changer
- Front and integral rear antenna
- Wood/Leather steering wheel
- Advanced DVD & Navigation
- Floor console
- Lift gate with lift glass
- Rear powered liftgate
- Load leveling suspension
- Locking rear differential
- Power disc anti lock brake
- Power adjustable pedals
- Stabilitrac
- Heated rear seats
- Heated / Cooled front seats
- Engine/Transmission oil cooler
- Transfer case – AWD
- Wheel spare full size 17" Steel
- Locking spare tire carrier
- Premium Audio System
- Luggage carrier cross rails
- Convenience PKG Level #3
- Merchandise PKG luxury edition
- Surround amplifier
- Rear view camera
- Fog lamps
- XM NAV
- Ultrasonic rear park assist
- Homelink universal transmitter
- Tire pressure monitor system
- Steering wheel radio controls
- Rear audio controls
- Bluetooth for phone

### INCLUDED OPTIONS

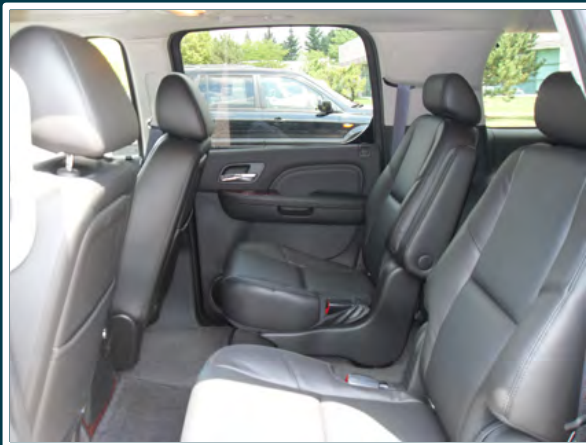
- V8 Ultra luxury collection
- Side blind zone alert
- Front heated & cooled seats
- 2nd row seat power release
- Magnetic ride control
- Heated steering wheel
- Power rear sunshade
- Rear sunshades
- Front ventilated seats
- Intellibeam headlights

### [OEM Window Sticker](#)



COMPLETED VEHICLE

EXTERIOR-INTERIOR PHOTOS



ALPINE'S BALLISTIC CHART

ALPINE ARMORING INC.

LEVEL	CALIBER	TYPE	MASS (gram)	MATERIAL	VELOCITY m/s (ft/s) (a)	SHOTS	UL (b)	NIJ (f)	CEN	DIN
A1	9 x 19 mm	Handgun (Pistol)	8	LCCJ	358 (1,175)	5 (e)	1	I, IIA, II	—	1
A2	.357 Magnum	Handgun (Pistol)	10.2	JSP	430 (1,410)	5 (e)	2	IIA, II	B1, B3	2
A3	.44 Magnum	Handgun (Revolver)	15.6	LWC	440 (1,443)	5 (e)	3	IIIA	B4	3
A4	9 x 19 mm	Sub-machinegun	8	LCCJ	427 (1,400)	5 (e)	6	IIIA	B2	—
A5	7.62 x 25 mm	Handgun (Tokorev)	5.5	LCSJ	488 (1,600)	5 (e)	—	—	—	—
A6	7.62 x 39 mm	AK-47 (HP Rifle)	9.7	SCCJ (d)	732 (2,400)	5 (e)	—	—	—	—
A7	.30 - 06	HP Rifle	11.7	JSP	774 (2,540)	5 (e)	4	—	B5	—
A8	5.56 x 45 mm	HP Rifle (M-16)	3.6	LCCJ (d)	991 (3,250)	5 (e)	7	—	B6	4
A9	7.62 x 51 mm	HP Rifle / M193	9.7	LCSJ (d)	838 (2,750)	5 (e)	5, 8	III	B7	5
A10	.30 - 06	HP Rifle	10.8	AP (d)	869 (2,850)	3 (e)	—	IV	—	—
SG	12 Gauge	Shotgun	28.3	Slug	503 (1,650)	3 (c)	SG	—	SG2	SG2

- UL:** Underwriters Laboratory, 752
- NIJ:** National Institute of Justice, 0108.01
- CEN:** European Standard
- DIN:** German Standards, 52290
- STANAG:** NATO

- LCCJ:** Lead Core Copper Jacket
- JSP:** Jacketed Soft Point
- LWC:** Lead Wad Cutter
- LCSJ:** Lead Core Steel Jacket
- SCCJ:** Steel Core Copper Jacket
- AP:** Armor Piercing
- SG:** Shotgun
- (A)** Minimum Measured Velocity
- (B)** Ambient Temperature Only
- (C)** 11.4 cm Triangular Patter
- (D)** Military Ammunition, All Other Commercial
- (E)** Corners & Center of 11.4 Square Pattern
- (F)** Levels I, II, IIA & IIIA based on 1 of 2 Required Calibers of Ballistic Threat

"no one protects you better."





# WARRANTY

CADILLAC ESCALADE ESV  
VIN: 1GYFK26259R257098

The vehicle above is under Alpine's premium warranty covering all its armored parts and labor as well as all added accessories for one full year, effective the date of final delivery to the client.

Alpine Armoring Inc. hereby honors this warranty, in the United States and worldwide, against any and all related manufacturer's defects.

MANAGEMENT AUTHORIZED  
ALPINE ARMORING INC.  
HERNDON, VIRGINIA, USA

DATE SIGNED

Original Vehicle's [Title](#)

OEM's [Window Sticker](#)





# Certificate of Ballistic Standards

CADILLAC ESCALADE ESV  
VIN: 1GYFK26259R257098

The vehicle above is hereby certified according to level **A9/B6+**. The materials, both opaque and transparent (including ballistic hardened steel, all glass and/or any special composite material), used in armoring this vehicle have been tested and certified by an authorized independent laboratory.

**CONVERSION:** Entire passenger area (Transparent and Opaque), roof, and especially floor, plus firewall and wheel wells. Battery, computer module and fuel tank are also protected.

- Full multi-hit (5 rounds) protection against high power rifles (A9/B6+), including **AK47, 7.62x39, 5.56x45, 7.62x51, M193 & M80 ball**
- All original glass is removed and replaced with high quality no spall NIJ tested Multi-layered ballistic polycarbonate/glass
- All opaque materials surrounding the passenger area are replaced with hardened ballistic NIJ certified steel
- All overlap areas are protected separately with multilayered padding on both sides
- Protection for the floor (against mines/fragmentation including two DM51 anti-personnel hand grenade) using ballistic steel
- Protection for the roof (at or above 45° angle) using special ballistic steel
- Fuel tank will be ballistically and independently protected all around
- Separate ballistic protection for the battery, black box/computer module
- Patented design armoring for firewall and all wheel wells

Management  
Alpine Armoring Inc.  
Herndon, Virginia, USA

\_\_\_\_\_  
Date

