

# THE NEW LAND ROVER DEFENDER



ABOVE & BEYOND

DEFENDER



ENTER

scroll or swipe to interact



BY APPOINTMENT TO  
HER MAJESTY THE QUEEN  
MANUFACTURERS OF  
MOTOR VEHICLES  
JAGUAR LAND ROVER LIMITED  
COVENTRY

BY APPOINTMENT TO  
HIS ROYAL HIGHNESS THE DUKE OF EDINBURGH  
MANUFACTURERS OF  
MOTOR VEHICLES  
JAGUAR LAND ROVER LIMITED  
COVENTRY

BY APPOINTMENT TO  
HIS ROYAL HIGHNESS THE PRINCE OF WALES  
MANUFACTURERS OF  
MOTOR VEHICLES  
JAGUAR LAND ROVER LIMITED  
COVENTRY



**ABOVE & BEYOND**

Ever since the first Land Rover vehicle was conceived in 1947, we have built vehicles that challenge what is possible. These in turn have challenged their owners to explore new territories and conquer difficult terrains. Our vehicles epitomize our brand. Vehicles with exemplary design credentials and engineering capabilities. Which is how we continue to break new ground, defy conventions and encourage each other to go further. Land Rover truly enables you to make more of your world, to go above and beyond.

Some Defender vehicles shown may be European models with optional equipment. Vehicle trims and options shown may not be available in the United States. See your local Land Rover Retailer for details.



**DESIGN**

**ACCESSORY PACKS**

**CAPABILITY**

**PRACTICALITY**

**TECHNOLOGY**

**PERSONALIZATION**

## DESIGNED. LIKE NO OTHER

How do you redefine an icon? Push harder. Dig deeper. You go above and beyond. You capture its very essence. Then you reimagine it. You design, engineer and build it without compromise. Until you've created a vehicle that's absolutely of the moment. One that's visually compelling, with a go-anywhere-do-anything attitude and toughness at its very core. Capable of great things, this is Land Rover Defender. It couldn't be anything else.



Off-road driving requires advanced training and experience. These activities may result in injury and/or property damage. Always check your route, surfaces and surrounding areas before entering and exiting unsurfaced roads and frozen terrain.

Vehicle shown is Defender 90 First Edition in Pangea Green with optional Satin Protective Film.

Vehicles shown throughout are from the Land Rover global range. Specifications, optional features and their availability may differ by vehicle specification (model and powertrain), or require the installation of other features in order to be fitted. Please contact your local Retailer for more details, or configure your vehicle online. All in-car features should be used by drivers only when safe.



DESIGN

ACCESSORY PACKS

CAPABILITY

PRACTICALITY

TECHNOLOGY

PERSONALIZATION

## PURPOSEFUL DESIGN. ENDLESS POSSIBILITIES

The Defender is our most capable Land Rover yet. You can choose either a 90 or 110 body design, both of which are world-class experts, off and on-road. With up to six seats in the 90 and the option of a third row with 5+2 seats in 110. There are six models available on 110 and a First Edition only available on 90 - and four Accessory Packs, each with a distinctive character to suit your lifestyle. It's the ultimate personalization.

Vehicles shown are Defender 90 First Edition and Defender 110 SE in Pangea Green with optional Satin Protective Film.

[BUILD YOUR OWN](#)

90



110



DESIGN

ACCESSORY PACKS

CAPABILITY

PRACTICALITY

TECHNOLOGY

PERSONALIZATION

Everything about Defender exudes quiet confidence; from its purposeful stance to its reductive, sophisticated surfaces, its integrity is beyond reproach. Both highly desirable and seriously capable. Tough, durable and highly functional, the Defender interior bears testimony to the vehicle's spirit of adventure. Structural elements are made of robust materials. Intuitive technologies - like those you're more likely to find on a smartphone - deliver a connected, engaged drive without taking anything away from the vehicle's ambience. Added to which, everything has been designed with practicality in mind. With a cabin walk-through\*1, an optional front jump seat and center console, the space can be configured any number of ways. Including yours.

\*Model dependent.

1Not available on Defender X.



# EXTERIOR DESIGN

Vehicle shown is Defender 90 First Edition in Pangea Green with optional Satin Protective Film.



DESIGN

ACCESSORY PACKS

CAPABILITY

PRACTICALITY

TECHNOLOGY

PERSONALIZATION

Impressive proportions and a reassuringly recognizable silhouette help define the arresting looks of the Defender. While short overhangs, great ground clearance and upright front and rear elevations give credence to the vehicle's capabilities. Floating bollards and alpine lights add to its personality, with solid shoulders and powerful squared-off wheel arches that communicate the vehicle's purposeful stance. This is design with undoubted integrity. And unrivaled purpose.



DESIGN

ACCESSORY PACKS

CAPABILITY

PRACTICALITY

TECHNOLOGY

PERSONALIZATION

Approachable. Confident. No nonsense. With its compact, upright look, the Defender front profile features a raised hood, sculpted grille and detailing. Together with such characterful touches as round headlights and some of our most sophisticated surfaces yet, these aspects help reinforce the vehicle's overriding sense of capability.



DESIGN

ACCESSORY PACKS

CAPABILITY

PRACTICALITY

TECHNOLOGY

PERSONALIZATION



A celebration of design and functionality. The perfect fusion of form, vertical stance and attitude. From behind, the vehicle looks both utterly modern and perfectly planted. While details like the side-opening tailgate with externally mounted full-size spare wheel and characterful tail lights all point to the distinctive nature of the Defender.



DESIGN

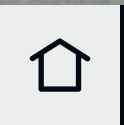
ACCESSORY PACKS

CAPABILITY

PRACTICALITY

TECHNOLOGY

PERSONALIZATION



DESIGN

ACCESSORY PACKS

CAPABILITY

PRACTICALITY

TECHNOLOGY

PERSONALIZATION



DESIGN

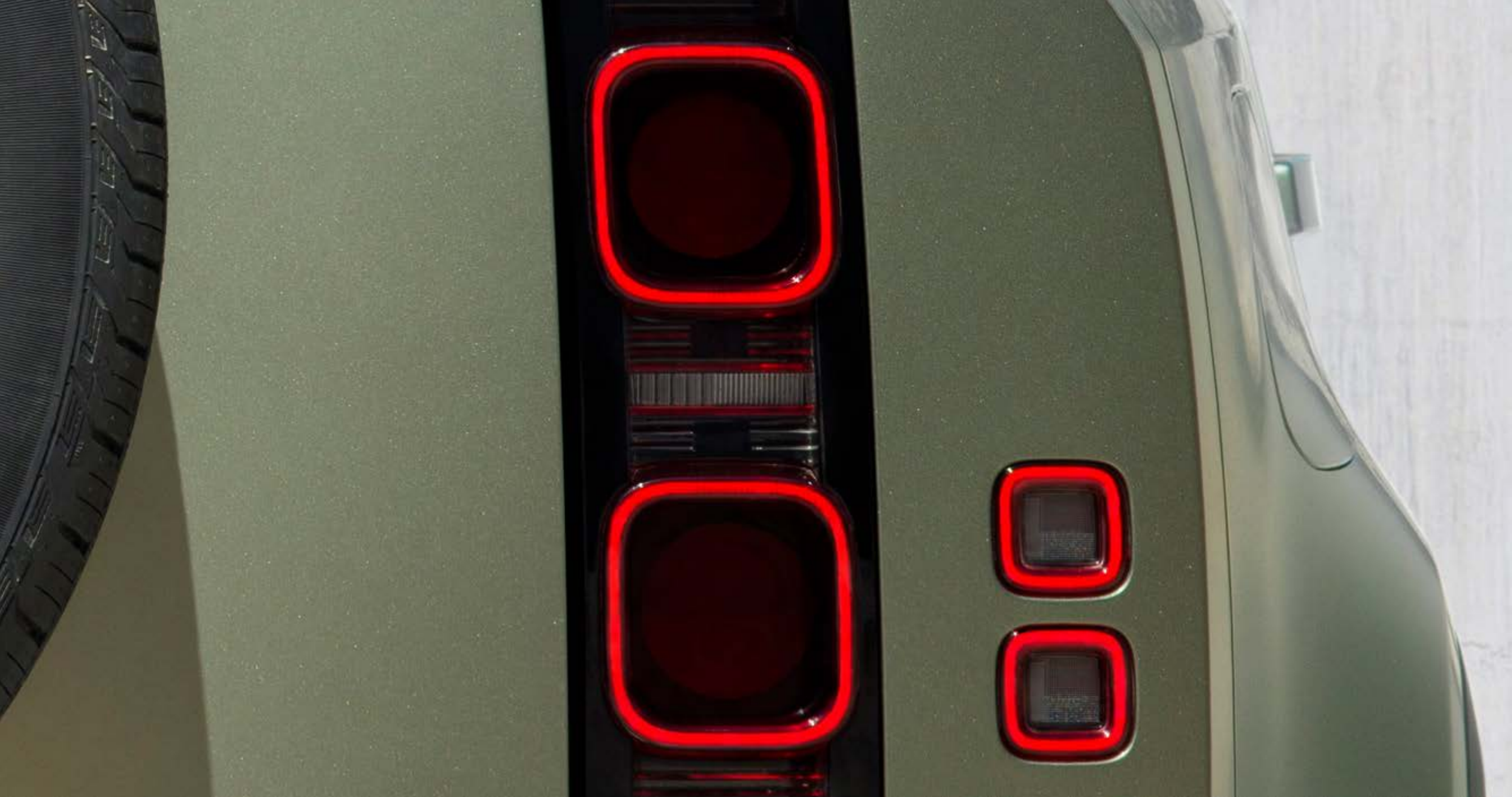
ACCESSORY PACKS

CAPABILITY

PRACTICALITY

TECHNOLOGY

PERSONALIZATION



DESIGN

ACCESSORY PACKS

CAPABILITY

PRACTICALITY

TECHNOLOGY

PERSONALIZATION

# INTERIOR DESIGN

Interior shown is Defender 90 First Edition in Khaki/Ebony.



DESIGN

ACCESSORY PACKS

CAPABILITY

PRACTICALITY

TECHNOLOGY

PERSONALIZATION



## EXPOSED STRUCTURAL SURFACES. POWDER-COATED ACCENTS

Uncompromizingly tough, the visible fixings for the major interior components underscore absolute integrity. Strength, durability and highly functional interior architecture are in its DNA. For instance, the interior's exposed structural surfaces are finished in a highly durable textured powder coat, extending to the steering wheel and doors\*. Built to take the knocks, the cross car beam is an integral structure which adds greatly to the Defender strength.

\*When Meridian™ audio system is fitted.



DESIGN

ACCESSORY PACKS

CAPABILITY

PRACTICALITY

TECHNOLOGY

PERSONALIZATION



DESIGN

ACCESSORY PACKS

CAPABILITY

PRACTICALITY

TECHNOLOGY

PERSONALIZATION

## DURABLE INTERIOR MATERIALS

The spirit of boundless adventure is the first and lasting impression of the Defender interior. Thanks in part to its materials. These include a canvas-inspired Robust Woven Textile, which is offered with the grained leather seats to reduce wear and tear in areas where it is needed most.

Defender X unique hard-wearing seat materials include Windsor leather combined with Kvadrat Steelcut Premium wool textile.

There is also a choice of optional\* veneers and finishers on the console, including an open pore wood available with a Rough-cut Walnut or Natural Smoked Dark Oak veneer.

\*Model dependent.



DESIGN

ACCESSORY PACKS

CAPABILITY

PRACTICALITY

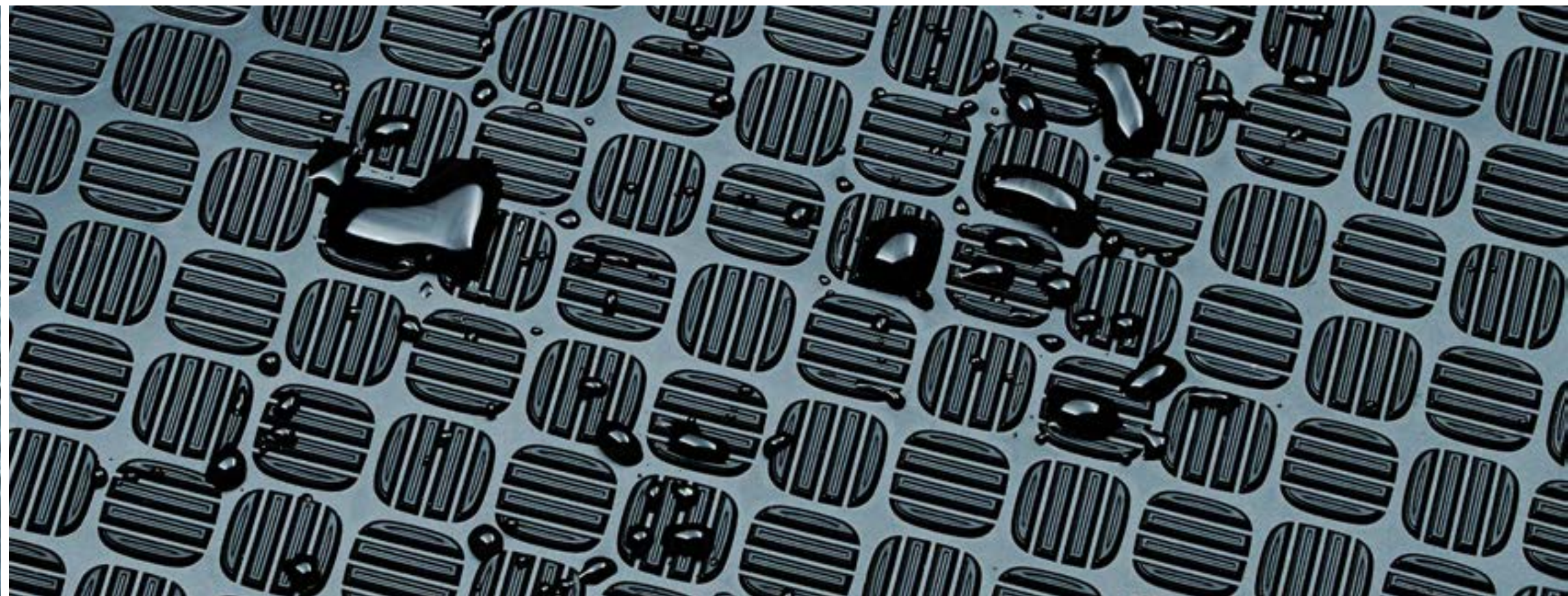
TECHNOLOGY

PERSONALIZATION



## HARD-WEARING RUBBER FLOORING

The Defender Durable Rubber Flooring is ready for anything - anything - you want to throw at it. Incredibly tough and, thanks in part to flush door sills, easy to clean, it features a checker finisher which adds greatly to the compelling cabin design. Go on. Get out there. Get it dirty.



DESIGN

ACCESSORY PACKS

CAPABILITY

PRACTICALITY

TECHNOLOGY

PERSONALIZATION

# ACCESSORY PACKS

Our four optional accessory packs have been created to suit your needs. To suit your lifestyle. Enhancing the vehicle's capability and toughness even further. So, whether you're exploring the rugged outback or conquering the commute, you can go your own way.



# EXPLORER PACK

Blaze your own trail in most terrain. Explorer Pack equips Defender to defy conventions and conquer the most uncharted landscapes.

Vehicle shown is Defender 110 First Edition in Indus Silver.  
Accessories shown: Explorer Pack with Front Expedition Protection System, Fixed Side Steps, and Deployable Roof Ladder upgrades.



DESIGN

ACCESSORY PACKS

CAPABILITY

PRACTICALITY

TECHNOLOGY

PERSONALIZATION

# EXPLORER PACK

## CONSISTS OF:

**Raised Air Intake** is ideal for dusty and sandy conditions.

**Expedition Roof Rack** has a lightweight, fully integrated design, providing a dynamic load capacity of up to 291 lbs<sup>1</sup>.

The 0.8 cu.ft **Exterior Side-mounted Gear Carrier** is easy to access, lockable and waterproof. It's perfect for carrying items such as walking boots or wetsuits.

**Matte Black Hood Decal** enhances the hood's appearance and includes a '90' or '110' cut-out detail.

**Wheel Arch Protection** provides additional protection when driving off-road.

<sup>1</sup>Defender 110 with off-road tires.



**Front & Rear Classic Mudflaps** retain the heritage of Land Rover Defender while protecting the paintwork.

**Spare Wheel Cover** protects the rear-mounted spare wheel.

## UPGRADES

**Front Expedition Protection System**<sup>1</sup> provides robust protection to the front of the vehicle and the raised corners improve the front approach angle.

Improving access to the roof, the **Deployable Roof Ladder**<sup>1</sup> makes storing your belongings easier. For added security, the ladder can be locked in the stored position.

**Fixed or Deployable Side Steps**<sup>1</sup> aid access into the vehicle. Deployable side steps<sup>2</sup> automatically deploy as the doors are opened.

**Bright Side Tubes**<sup>13</sup> enhance the side of the vehicle while providing protection to the door sides during off-road driving.

**The Cargo Space Rubber Mat** is waterproof with a non-slip surface and helps protect the rear cargo space floor from general dirt, while **Deep-sided Rubber Mats** provide the ultimate in footwell protection.



<sup>1</sup>Upgrades available mid-2020.

<sup>2</sup>Available for Defender 110 only. Not compatible with Fixed Side Steps or Bright Side Tubes.

<sup>3</sup>Not compatible with Fixed Side Steps or Deployable Side Steps.



DESIGN

ACCESSORY PACKS

CAPABILITY

PRACTICALITY

TECHNOLOGY

PERSONALIZATION

# ADVENTURE PACK

Take your passions to new territories. Adventure Pack equips Defender to take you off the beaten track and into nature's playground.

Vehicle shown is Defender 90 SE in Pangea Green.  
Accessories shown: Adventure Pack with Fixed Side Steps and 'A' Frame Protection Bar upgrades. Front Undershield also shown (Available mid-2020).



DESIGN

ACCESSORY PACKS

CAPABILITY

PRACTICALITY

TECHNOLOGY

PERSONALIZATION

# ADVENTURE PACK

## CONSISTS OF:

Clean your equipment easily with the 0.2 cu.ft pressurized **Portable Rinse System**. Including a hose and shower attachment, it can be used to rinse boots, bikes and wetsuits.

Secured to the rear seat, keep all of your essential items at hand, yet neatly out of sight. Easily removable, the versatile 0.7 cu.ft **Seat Backpack** can also be taken with you when you leave the vehicle.

**Bright Rear Scuff Plate** protects the rear bumper from scratches and scuffs while loading the vehicle.

**Front & Rear Mudflaps** add to the design of the vehicle and protect the paintwork from dirt and debris.

**Spare Wheel Cover** protects the rear-mounted spare wheel.



The **Integrated Air Compressor** is fitted in the cargo space and can be used to inflate vehicle tires, bike tires, airbeds and other inflatable items.

The 0.8 cu.ft **Exterior Side-mounted Gear Carrier** is easy to access, lockable and waterproof. It's perfect for carrying items such as walking boots or wetsuits.

## UPGRADES

The **'A' Frame Protection Bar**<sup>1</sup> increases protection against damage to Defender's front, as well as enhancing the vehicle's appearance.

**Fixed or Deployable Side Steps**<sup>1</sup> aid access into the vehicle. Deployable side steps<sup>2</sup> automatically deploy as the doors are opened.

**Bright Side Tubes**<sup>13</sup> enhance the side of the vehicle while providing protection to the door sides during off-road driving.

The **Cargo Space Rubber Mat** is waterproof with a non-slip surface and helps protect the rear cargo space floor from general dirt, while **Deep-sided Rubber Mats** provide the ultimate in footwell protection.



<sup>1</sup>Upgrades available mid-2020.

<sup>2</sup>Available for Defender 110 only. Not compatible with Fixed Side Steps or Bright Side Tubes.

<sup>3</sup>Not compatible with Fixed Side Steps or Deployable Side Steps.

Vehicle is shown with Front Undershield (available mid-2020) and Cross Bars.



DESIGN

ACCESSORY PACKS

CAPABILITY

PRACTICALITY

TECHNOLOGY

PERSONALIZATION



# COUNTRY PACK

Bring the muddiest of boots. Country Pack equips Defender to embrace the elements and make every journey truly memorable.

Vehicle shown is Defender 110 First Edition in Indus Silver.  
Accessories shown: Country Pack with Deployable Side Steps and 'A' Frame Protection Bar upgrades (Available mid-2020).



DESIGN

ACCESSORY PACKS

CAPABILITY

PRACTICALITY

TECHNOLOGY

PERSONALIZATION

# COUNTRY PACK

## CONSISTS OF:

**Front & Rear Classic Mudflaps** retain the heritage of Land Rover Defender while protecting the paintwork.

**Full Height Cargo Space Partition** prevents items stored in the rear cargo space from passing into the cabin.

Clean your equipment easily with the 0.7 cu.ft pressurized **Portable Rinse System**. Including a hose and shower attachment, it can be used to rinse boots, bikes and wetsuits.

**Bright Rear Scuff Plate** protects the rear bumper from scratches and scuffs while loading the vehicle.

**Wheel Arch Protection** provides additional protection when driving off-road.



## UPGRADES

**Fixed or Deployable Side Steps**<sup>1</sup> aid access into the vehicle. Deployable side steps<sup>2</sup> automatically deploy as the doors are opened.

**Bright Side Tubes**<sup>13</sup> enhance the side of the vehicle while providing protection to the door sides during off-road driving.

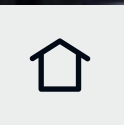
The **'A' Frame Protection Bar**<sup>1</sup> increases protection against damage to Defender's front, as well as enhancing the vehicle's appearance.

The **Cargo space Rubber Mat** is waterproof with a non-slip surface and helps protect the rear cargo space floor from general dirt, while **Deep-sided Rubber Mats** provide the ultimate in footwell protection.

<sup>1</sup>Upgrades available mid-2020.

<sup>2</sup>Available for Defender 110 only. Not compatible with Fixed Side Steps or Bright Side Tubes.

<sup>3</sup>Not compatible with Fixed Side Steps or Deployable Side Steps.



DESIGN

ACCESSORY PACKS

CAPABILITY

PRACTICALITY

TECHNOLOGY

PERSONALIZATION

# URBAN PACK

Conquer the concrete jungle. Urban Pack equips Defender to stand out in the suburbs with head-turning style, confidence and composure.

Vehicle shown is Defender 90 SE in Pangea Green with optional Satin Protective Film and 22" Style 5098, 5 spoke, Gloss Black wheels. Accessories shown: Urban Pack with Bright Side Tubes upgrade. Front Undershield also shown.



DESIGN

ACCESSORY PACKS

CAPABILITY

PRACTICALITY

TECHNOLOGY

PERSONALIZATION

# URBAN PACK

## CONSISTS OF:

**Bright Metal Pedals** add to the robust interior.

**Bright Rear Scuff Plate** protects the rear bumper from scratches and scuffs while loading the vehicle.

**Spare Wheel Cover** protects the rear-mounted spare wheel.

**Front Undershield\*** provides protection to the front lower bumper when driving off-road and allows easy access to the recovery loop.

\*Available mid-2020.



DESIGN

ACCESSORY PACKS

CAPABILITY

PRACTICALITY

TECHNOLOGY

PERSONALIZATION

## UPGRADES

### 20" Style 5095, 5 split-spoke, Gloss Dark Grey wheels

**Fixed or Deployable Side Steps**<sup>1</sup> aid access into the vehicle. Deployable side steps<sup>2</sup> automatically deploy as the doors are opened.

**Bright Side Tubes**<sup>3</sup> enhance the side of the vehicle while providing protection to the door sides during off-road driving.

The **Cargo Space Rubber Mat** is waterproof with a non-slip surface and helps protect the rear cargo space floor from general dirt, while **Luxury Carpet Mats** provide stylish footwell protection.

<sup>1</sup>Upgrades available mid-2020.

<sup>2</sup>Available for Defender 110 only. Not compatible with Fixed Side Steps or Bright Side Tubes.

<sup>3</sup>Not compatible with Fixed Side Steps or Deployable Side Steps.



# FIT FOR PURPOSE. ANY PURPOSE

We set out to create something that would stand the test of time.  
To do that, we left nothing to chance.



DESIGN

ACCESSORY PACKS

CAPABILITY

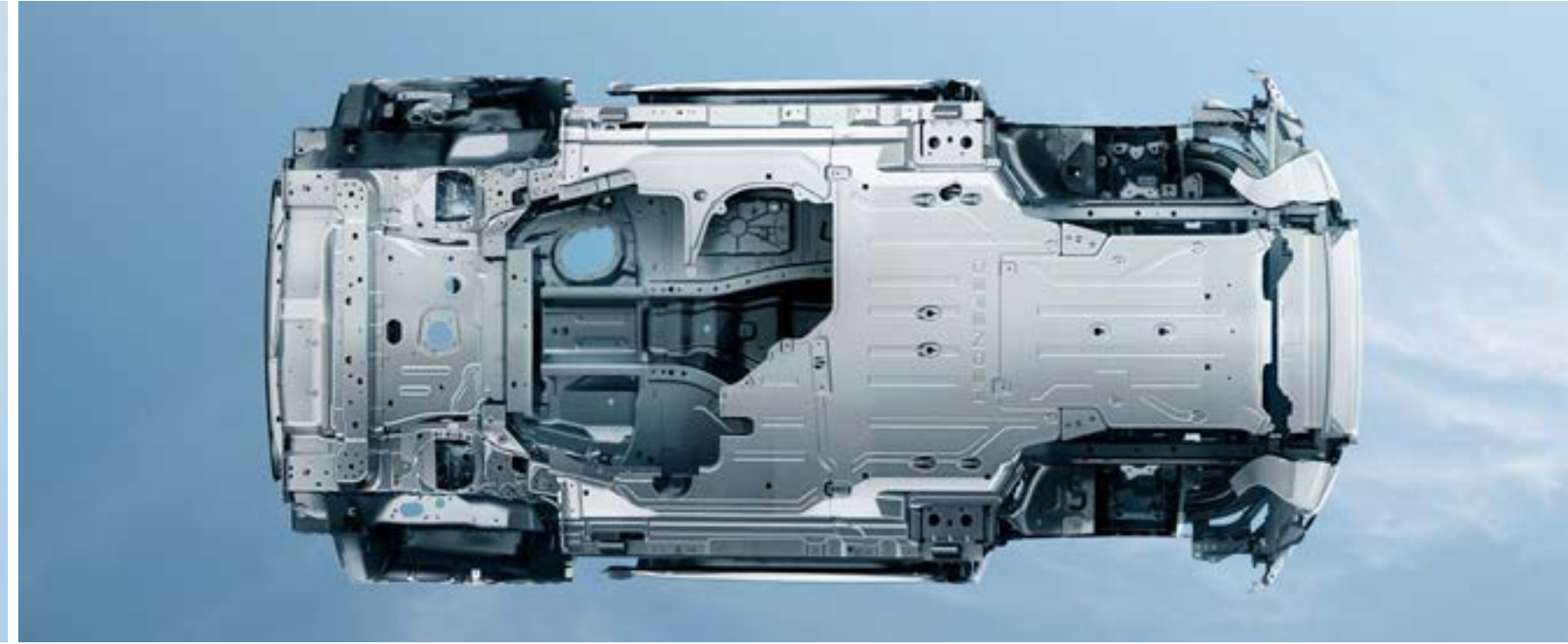
PRACTICALITY

TECHNOLOGY

PERSONALIZATION

## MONOCOQUE ARCHITECTURE

Unique monocoque architecture contributes to Defender being the toughest and strongest vehicle we have ever created. It has triple the torsional rigidity of a body-on-frame design. While being lightweight and engaging to drive.





## TESTED TO THE EXTREME

Three-quarters of a million miles of on and off-road drives. 45,000 individual tests. From 122°F to -40°F. Crossing the dunes of Dubai to sweeping down the straights of the Nürburgring. We've conducted altitude tests, drenched Defender in 26,966 US gallons of dyed water in our monsoon facility and engineered its tires to withstand greater impact. In fact, we've gone to more challenging extremes than ever before to create a vehicle that's capable of great things. This is Defender.

[BUILD YOUR OWN](#)



# GO ANYWHERE. DO ANYTHING

Defender has been engineered so you can dream bigger.  
Push harder. Go above and beyond.



DESIGN

ACCESSORY PACKS

CAPABILITY

PRACTICALITY

TECHNOLOGY

PERSONALIZATION

## ALL WHEEL DRIVE (AWD)

Commanding. Off and on-road. The system intelligently controls torque distribution between the front and rear axle. On challenging surfaces, such as sand, grass or snow, torque can be balanced between the front and rear wheels to maximize traction. In extreme conditions, where the front or rear wheels lose traction, up to 100 percent of engine torque can be distributed to the opposite axle for optimum grip. The AWD system combines with Electronic Traction Control (ETC) to deliver a driving experience in even the most challenging situations\*.

It's your world. Take command.

## TWIN-SPEED TRANSFER BOX

An additional set of lower gears can prove invaluable in challenging conditions such as steep inclines or declines, off-road driving or when towing\*.

\*These systems are not a substitute for driving safely with due care and attention and will not function under all circumstances, speeds, weather and road conditions, etc. Driver should not assume that these systems will correct errors of judgment in driving. Please consult the owner's manual or your local authorized Land Rover Retailer for more details.

Accessories shown: Explorer Pack with Front Expedition Protection System and Deployable Roof Ladder upgrades. The Front Expedition Protection System improves off-road capability by increasing the front approach angle.



DESIGN

ACCESSORY PACKS

CAPABILITY

PRACTICALITY

TECHNOLOGY

PERSONALIZATION

## ELECTRONIC AIR SUSPENSION

A comfortable and capable drive is ensured by Electronic Air Suspension\*. Select from an access height of 1.6" below normal ride height, to an extended height of up to 3.0". For extreme off-road conditions, a further extended ride height of 2.8" is available. Even across unsteady surfaces it provides exceptional wheel articulation and poise\*.

\*These systems are not a substitute for driving safely with due care and attention and will not function under all circumstances, speeds, weather and road conditions, etc. Driver should not assume that these systems will correct errors of judgment in driving. Please consult the owner's manual or your local authorized Land Rover Retailer for more details.



## ELECTRONIC ACTIVE DIFFERENTIAL

On or off-road. In ice, rain or snow. The optional Electronic Active Differential helps ensure the greatest level of traction. It does so by controlling the slip between the left and right wheels on the rear axle, helping to deliver effortless capability. Not only that, it's far more effective than brakes when traction is lost, reacting much faster and with a smoother response\*.

\*These systems are not a substitute for driving safely with due care and attention and will not function under all circumstances, speeds, weather and road conditions, etc. Driver should not assume that these systems will correct errors of judgment in driving. Please consult the owner's manual or your local authorized Land Rover Retailer for more details.

Vehicle shown is Defender 110 X in Gondwana Stone.



DESIGN

ACCESSORY PACKS

CAPABILITY

PRACTICALITY

TECHNOLOGY

PERSONALIZATION



## CONFIGURABLE TERRAIN RESPONSE<sup>1</sup>

Thanks to a world-first in Terrain Response, you can now individually configure Defender's powertrain, steering, differentials and traction control settings. This means you can go beyond - be it the Siberian tundra, or rock crawling in Moab\*.

So, get behind the wheel and discover what you're truly capable of.

\*These systems are not a substitute for driving safely with due care and attention and will not function under all circumstances, speeds, weather and road conditions, etc. Driver should not assume that these features will correct errors of judgment in driving. Please consult the owner's manual or your local authorized Land Rover Retailer for more details.

<sup>1</sup>Only available as part of a pack.



DESIGN

ACCESSORY PACKS

CAPABILITY

PRACTICALITY

TECHNOLOGY

PERSONALIZATION

## TERRAIN RESPONSE® 2

This vehicle is for those who aren't afraid to get out and live the way they want to live. Our unique Terrain Response systems enable the driver to optimize the vehicle's engine, gearbox, center differential and chassis systems to match the demands of the terrain.

The optional Terrain Response 2<sup>1</sup> takes the capabilities of our award-winning system to a new level. It features an automatic setting which monitors the terrain and systematically selects the most suitable setting\*.

\*These systems are not a substitute for driving safely with due care and attention and will not function under all circumstances, speeds, weather and road conditions, etc. Driver should not assume that these features will correct errors of judgment in driving. Please consult the owner's manual or your local authorized Land Rover Retailer for more details.

<sup>1</sup>Only available as part of a pack.

-  General Driving
-  Grass, Gravel, Snow
-  Mud & Ruts
-  Sand
-  Rock Crawl
-  Wade



DESIGN

ACCESSORY PACKS

CAPABILITY

PRACTICALITY

TECHNOLOGY

PERSONALIZATION



## HILL DESCENT CONTROL

Difficult slopes? You needn't worry. Hill Descent Control (HDC®) assists you with tricky descents by maintaining a constant speed and applying braking separately to each wheel. Hill Launch Assist is designed to help prevent the vehicle from rolling backwards as it pulls away on an incline. The vehicle also utilizes Gradient Release Control, which is designed to prevent the vehicle accelerating too quickly on a steep incline when the driver releases the brake\*.

\*These systems are not a substitute for driving safely with due care and attention and will not function under all circumstances, speeds, weather and road conditions, etc. Driver should not assume that these features will correct errors of judgment in driving. Please consult the owner's manual or your local authorized Land Rover Retailer for more details.

†Only available as part of a pack

## ALL TERRAIN PROGRESS CONTROL (ATPC)

All Terrain Progress Control (ATPC)<sup>1</sup> is a state-of-the-art optional system. It enables you to set and maintain a steady speed in challenging conditions such as slippery surfaces, including mud, wet grass, ice, snow and dirt roads. Operating like a conventional cruise control system, it functions between 1.1mph and 18.6mph, helping the driver to maintain concentration on the terrain ahead\*.



DESIGN

ACCESSORY PACKS

CAPABILITY

PRACTICALITY

TECHNOLOGY

PERSONALIZATION



## WADING

Life has a habit of throwing unexpected challenges our way. That's why Defender has a wading depth of 35.4", so crossing water need not be one of them. The Wade Program in Terrain Response raises the vehicle using Electronic Air Suspension\*. Unique to Land Rover, a 3D Surround Camera with Wade Sensing uses ultrasonic sensors in the door mirrors to visually and audibly alert you if the water approaches the vehicle's maximum wading depth\*\*.



\*These systems are not a substitute for driving safely with due care and attention and will not function under all circumstances, speeds, weather and road conditions, etc. Driver should not assume that these features will correct errors of judgment in driving. Please consult the owner's manual or your local authorized Land Rover Retailer for more details. \*\*Driving in floodwaters or moving water should be avoided. Driving through water can be extremely dangerous. The Wade Sensing feature only detects depth of water the vehicle is in at the present time and not of water ahead or around the vehicle. Therefore, Wade Sensing cannot predict whether it is safe to proceed and cannot detect steep drops in grade around the vehicle. The driver is responsible for determining the conditions of the route being driven.

Vehicle shown is Defender 90 First Edition in Pangea Green with optional Satin Protective Film. Accessories shown: Checker Body Protection Kit, Spare Wheel Cover and Expedition Roof Rack.

## TOWING

Whatever you take. Wherever it is you decide to go. The Defender 8201 lbs towing capability means it can readily respond to the most challenging demands. Combined with this is the optional Advanced Tow Assist\*, which allows you to reverse a trailer while Defender takes care of the counter-steering. The Touchscreen\*\* will also display both the current and desired trailer trajectory<sup>1</sup>.

\*Only available as part of a pack.

\*\*Driving while distracted can result in loss of vehicle control. Do not operate, adjust or view the navigation or multimedia systems under conditions that will affect your safety or the safety of others. Only use mobile phones and other devices, even with voice commands, when it is safe to do so.

<sup>1</sup>Before towing, please consult the owner's manual or your local Land Rover Retailer for more details.





## WINCHING

Pulling power and sheer strength are demonstrated with the Remote Control Electric Winch accessory. This has a maximum pulling force of 10,000 lbs and can be operated up to 147 feet away. It's the kind of no-nonsense practicality you need, say, when you're in the middle of the forest.

Learn how to check, prepare, maintain and use a winch at one of our Experience Centers<sup>1</sup>.

[BOOK AN EXPERIENCE DAY](#)

<sup>1</sup>Available mid-2020. Before using the winch, please consult the owner's manual or your local authorized Land Rover Retailer for more details

Vehicle shown is Defender 90 SE in Pangea Green with optional Satin Protective Film. Accessories shown: Checker Body Protection Kit, Expedition Roof Rack, Bright Side Tubes, Remote Control Electric Winch and Winch Mounting Kit (Accessories/Upgrades available mid-2020). Before using the winch, please consult the owner's manual or your local authorized Land Rover Retailer for more details.



DESIGN

ACCESSORY PACKS

CAPABILITY

PRACTICALITY

TECHNOLOGY

PERSONALIZATION

## THE WEIGHT OF YOUR WORLD? NO PROBLEM

You've felt it. That visceral urge to just pack everything up. Get behind the wheel. And go on the ultimate trek. The Defender outstanding carrying capability and payload means you can do just that.

Choose from a range of roof carrying accessories including the Expedition Roof Rack<sup>1</sup> or Aqua Sports Carrier<sup>1</sup>.

> EXPLORE ACCESSORIES

### STATIC LOAD

The Defender static roof load is up to 661 lbs which lets you make more of your adventure.

### ROOF TOP TENT<sup>2</sup>

And if the view is just too good to be missed? Stay the night.

### DYNAMIC LOAD

The dynamic roof load allows for up to 370 lbs<sup>3</sup>.

<sup>1</sup>Linked feature. <sup>2</sup>Only available on Defender 110 with Expedition Roof Rack.  
<sup>3</sup>Defender 110 with off-road tires.

Vehicle shown top is Defender 110 First Edition in Indus Silver.  
Accessories shown: Explorer Pack with Fixed Side Steps, Deployable Roof Ladder and Front Expedition Protection System upgrades (Upgrades available mid-2020).

Vehicle shown is Defender 90 SE in Pangea Green with optional Satin Protective Film.  
Accessories shown: Checker Body Protection Kit, Expedition Roof Rack, Bright Side Tubes, Remote Control Electric Winch and Winch Mounting Kit (Accessories/Upgrades available mid-2020).



DESIGN

ACCESSORY PACKS

CAPABILITY

PRACTICALITY

TECHNOLOGY

PERSONALIZATION

## ADAPTIVE DYNAMICS

Offered with Electronic Air Suspension<sup>1</sup>, Adaptive Dynamics makes the distance go by virtually unnoticed. The system monitors vehicle movements up to 500 times a second, reacting to driver or road inputs almost instantaneously to give greater control and minimize body movement, ensuring a composed, flat ride. It even senses off-road conditions, and optimizes damping accordingly so you arrive refreshed and relaxed<sup>1</sup>.

<sup>1</sup>These systems are not a substitute for driving safely with due care and attention and will not function under all circumstances, speeds, weather and road conditions, etc. Driver should not assume that these features will correct errors of judgment in driving. Please consult the owner's manual or your local authorized Land Rover Retailer for more details.

Vehicle shown is Defender 90 SE in Pangea Green with optional Satin Protective Film.  
Accessories shown: Urban Pack with Bright Side Tubes upgrade and optional 22" Style 5098 5 spoke Gloss Black wheels.  
Front Undershield also shown (Accessories/Upgrades available mid-2020).



DESIGN

ACCESSORY PACKS

CAPABILITY

PRACTICALITY

TECHNOLOGY

PERSONALIZATION



DESIGN

ACCESSORY PACKS

CAPABILITY

PRACTICALITY

TECHNOLOGY

PERSONALIZATION

## GEOMETRY

Outstanding geometry strengthens the vehicle's all-terrain capability. Its approach angle is 38 degrees<sup>1</sup>. This is coupled with a breakover angle of up to 31 degrees and a departure angle of 40 degrees<sup>1</sup>.

<sup>1</sup>With Electronic Air Suspension in Off-Road Height. Fitting of side tubes or side steps may affect the off-road capability of the vehicle.

Vehicle shown is Defender 90 First Edition in Pangea Green with optional Satin Protective Film.



DESIGN

ACCESSORY PACKS

CAPABILITY

PRACTICALITY

TECHNOLOGY

PERSONALIZATION

## GAS

There is a range of engines available for Defender: Two gas, 4-cylinder P300 or 6-cylinder P400. Each has been optimized for specific attributes to cater for all needs.

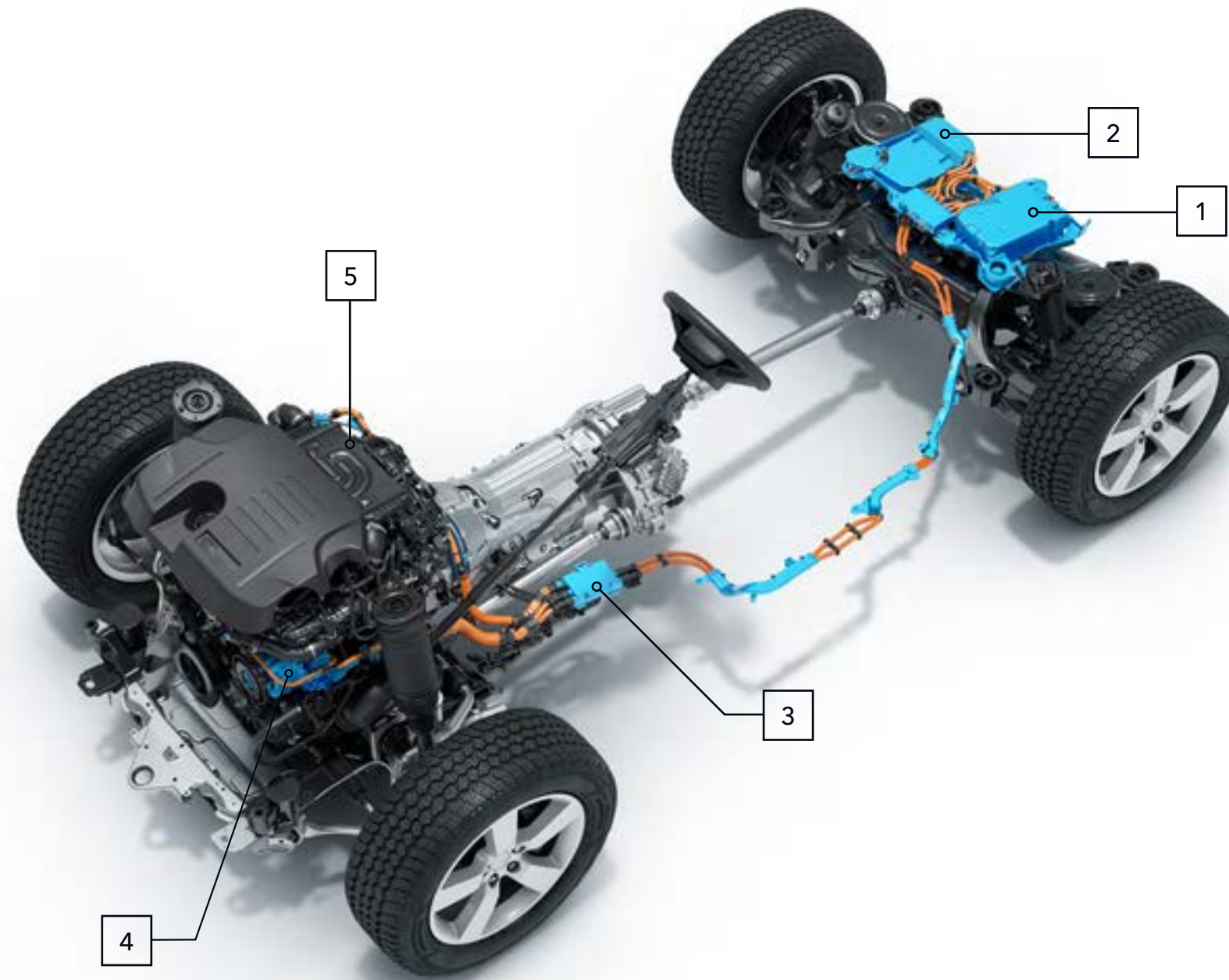
The Defender gas engines are powerful, which can provide an engaging and direct driving experience. They are refined and are suited to shorter, stop-start journeys.

All engines are equipped with intelligent Stop/Start technology which is designed to reduce emissions.

## GAS MHEV

Mild Hybrid Electric Vehicle (MHEV) technology will be fitted to the P400 engine. It harvests and stores energy normally lost during vehicle deceleration and intelligently redeploys it to increase the engine's efficiency. This system helps to boost the vehicle's performance.

- 1 48V LITHIUM-ION BATTERY
- 2 48V/12V DC-DC CONVERTER
- 3 MEDIUM VOLTAGE JUNCTION BOX
- 4 BELT-DRIVEN INTEGRATED STARTER GENERATOR
- 5 48V ELECTRIC SUPERCHARGER



Please refer to the accompanying Technical Specification for full details.



DESIGN

ACCESSORY PACKS

CAPABILITY

PRACTICALITY

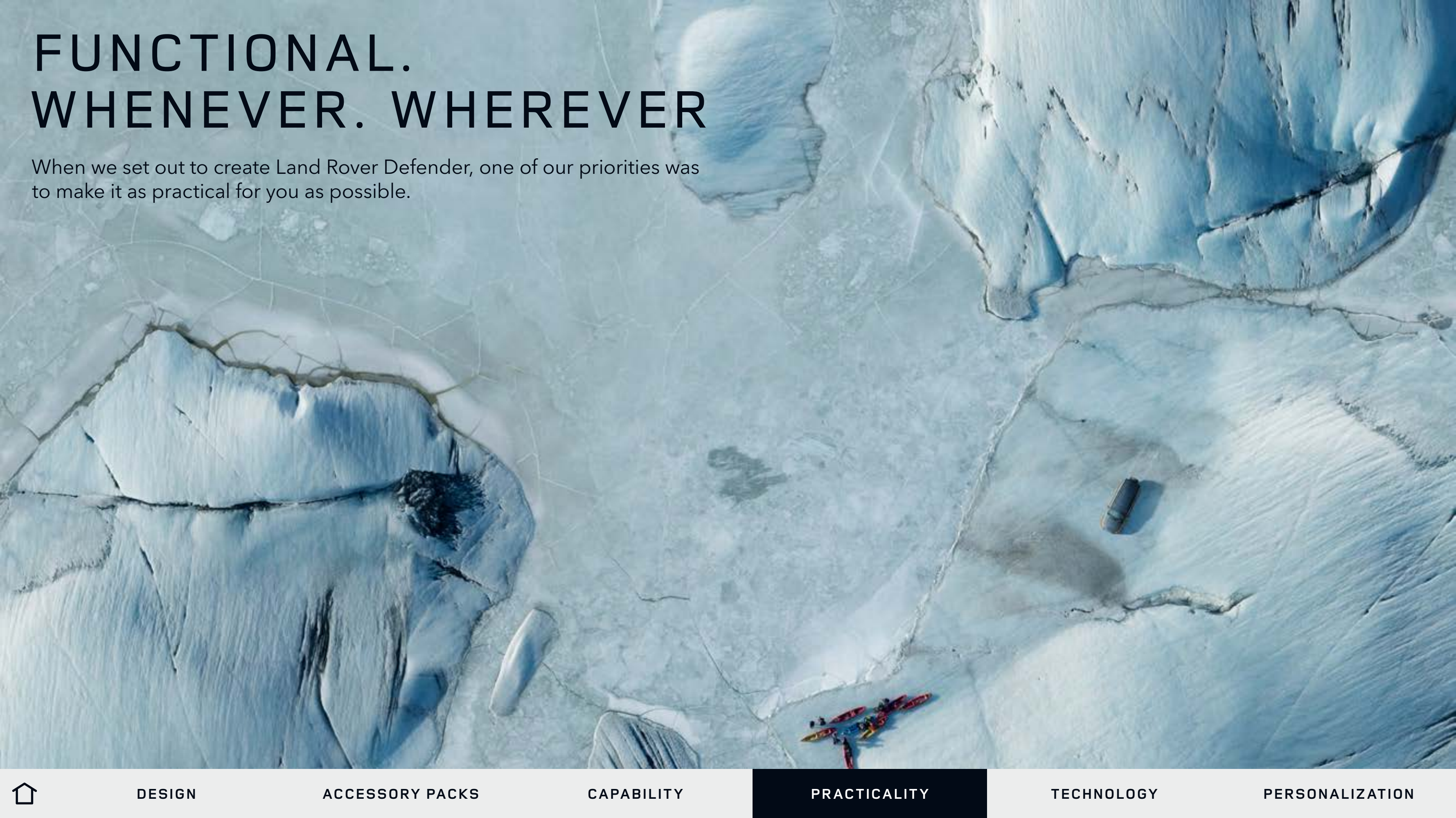
TECHNOLOGY

PERSONALIZATION



# FUNCTIONAL. WHENEVER. WHEREVER

When we set out to create Land Rover Defender, one of our priorities was to make it as practical for you as possible.



DESIGN

ACCESSORY PACKS

CAPABILITY

**PRACTICALITY**


TECHNOLOGY

PERSONALIZATION

## CONFIGURABILITY

When you build your own Defender, you can get everything you want. You can choose between a cabin walk-through<sup>1</sup> or a front jump seat. Or select a front center console, with or without a refrigerator<sup>2</sup>. It's the ultimate personalization. The cargo space capacity provides ample room for all your equipment.

<sup>1</sup>Model dependent. <sup>2</sup>Only available as part of a pack.

 BUILD YOUR OWN

CABIN WALK-THROUGH



FRONT JUMP SEAT



FRONT CENTER CONSOLE WITH ARMREST



DESIGN

ACCESSORY PACKS

CAPABILITY

PRACTICALITY

TECHNOLOGY

PERSONALIZATION

90  
5 SEATS WITH FRONT JUMP SEAT (STORED)



90  
6 SEATS WITH FRONT JUMP SEAT



110  
2 SEATS WITH CABIN WALK-THROUGH



110  
3 SEATS WITH CENTER CONSOLE



DESIGN

ACCESSORY PACKS

CAPABILITY

PRACTICALITY

TECHNOLOGY

PERSONALIZATION

110  
4 SEATS WITH CENTER CONSOLE



110  
5 SEATS WITH CENTER CONSOLE



110  
6 SEATS WITH FRONT JUMP SEAT



110  
5+2 SEATS



DESIGN

ACCESSORY PACKS

CAPABILITY

PRACTICALITY

TECHNOLOGY

PERSONALIZATION



## POWER SOCKETS

USB points or 12V power sockets available on every row. A cargo space plug socket mounted in the cargo space side wall, allowing passengers to power multiple devices. It's just another way to ensure you're always connected.

## SEAT BACKPACK

Secured to the rear seat, keep all of your essential items at hand, yet neatly out of sight. Easily removable, the versatile 0.7 cu.ft Seat Backpack can also be taken with you when you leave the vehicle.

## CLICK AND GO SYSTEM\*

A versatile, multi-purpose system for second-row passengers, with a choice of further attachments that can be added to hold your tablets, bags, laptops and jackets.



\*If optional equipment is not included Click and Go Base will be required (see above).  
Apple® is a registered trademark of Apple Inc., registered in the US and other countries.



DESIGN

ACCESSORY PACKS

CAPABILITY

PRACTICALITY

TECHNOLOGY

PERSONALIZATION

# TECHNOLOGY

Equipped for 21st century adventures, our most intuitive technologies to date ensure convenience, connectivity and visibility.

Vehicle shown is Defender 110 X in Gondwana Stone.



DESIGN

ACCESSORY PACKS

CAPABILITY

PRACTICALITY

TECHNOLOGY

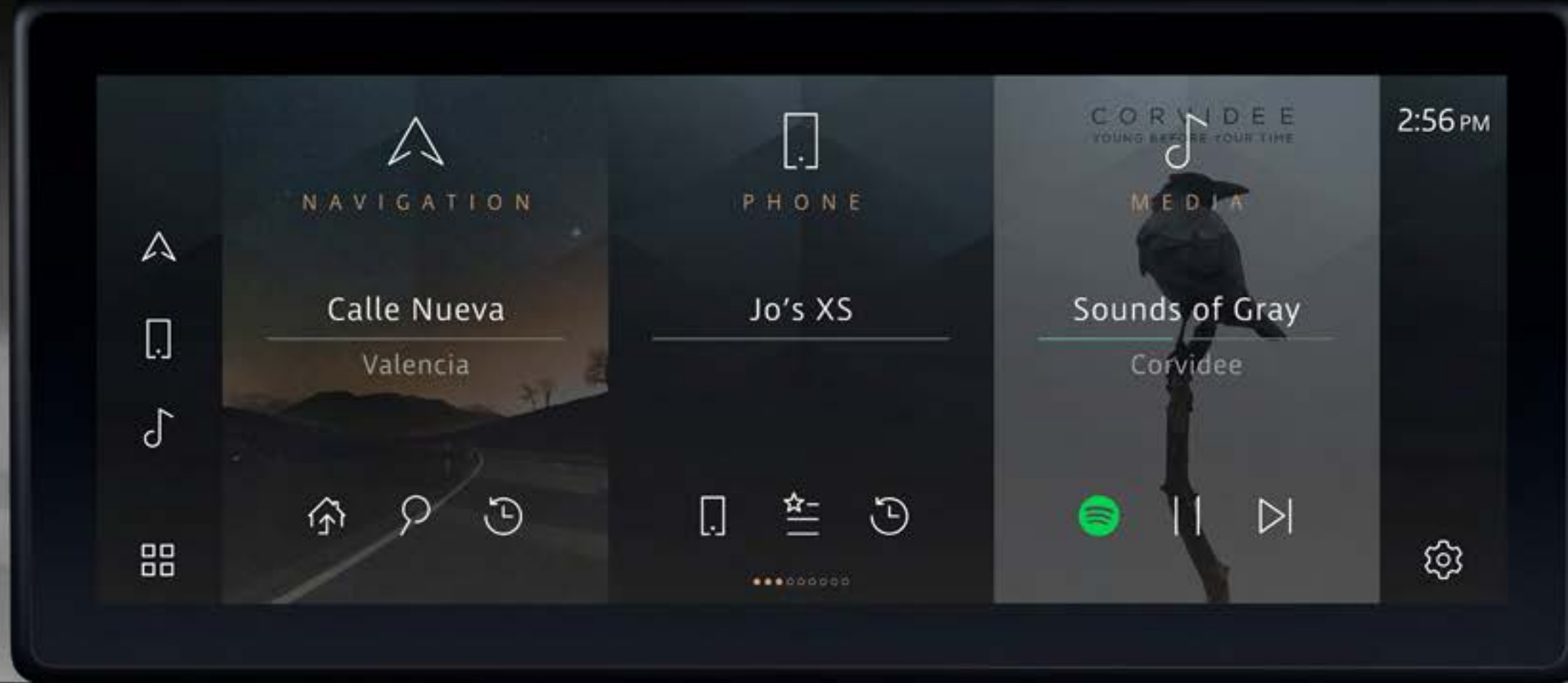
PERSONALIZATION

## PIVI PRO. AS FAMILIAR AS YOUR SMARTPHONE

Because technology shouldn't be complicated. Pivi Pro is our most intuitive infotainment system ever. It features an at-a-glance layout that enables you to carry out frequent tasks and use commonly accessed features on the home screen, including navigation, phone and media. You can easily customize the layout and add additional information or features.

Certain Pivi Pro features require an appropriate SIM card and a data plan with separate terms and conditions and may require an additional subscription after an initial term. Mobile connectivity cannot be guaranteed in all locations. Do not use such features under conditions that will affect your safety or the safety of others. Driving while distracted can result in loss of vehicle control.

EXPLORE IN-CAR TECHNOLOGY



DESIGN

ACCESSORY PACKS

CAPABILITY

PRACTICALITY

TECHNOLOGY

PERSONALIZATION



## HEAD-UP DISPLAY\*<sup>1</sup>

Presents key vehicle data, including speed, gear position and navigation directions, on the windshield. It features crystal-clear, full-color high-resolution graphics, enabling you to see all information with ease, including off-road driving information such as incline and camber angles.

## INTERACTIVE DRIVER DISPLAY

Entertained. Informed. Connected. Pivi Pro features a 12.3" high-definition Interactive Driver Display<sup>2</sup>. It can display a wide range of relevant information, entertainment and driver assistance data, including full-screen 3D map-view navigation, phone and media. Not only that, its refined processing engine delivers smooth-moving, pin-sharp graphics.

\*These systems are not a substitute for driving safely with due care and attention and will not function under all circumstances, speeds, weather and road conditions, etc. Driver should not assume that these systems will correct errors of judgment in driving. Please consult the owner's manual or your local authorized Land Rover Retailer for more details.

<sup>1</sup>Optional feature. Model dependent. <sup>2</sup>Model dependent.

Certain Pivi Pro features require an appropriate SIM card and a data plan with separate terms and conditions and may require an additional subscription after an initial term. Mobile connectivity cannot be guaranteed in all locations. Do not use such features under conditions that will affect your safety or the safety of others. Driving while distracted can result in loss of vehicle control.

All in-car features should be used by drivers only when safe for them to do so. Drivers must ensure they are in full control of the vehicle at all times.



DESIGN

ACCESSORY PACKS

CAPABILITY

PRACTICALITY

TECHNOLOGY

PERSONALIZATION



## CONNECTED NAVIGATION PRO<sup>1</sup>

Middle of the concrete jungle. Middle of nowhere.

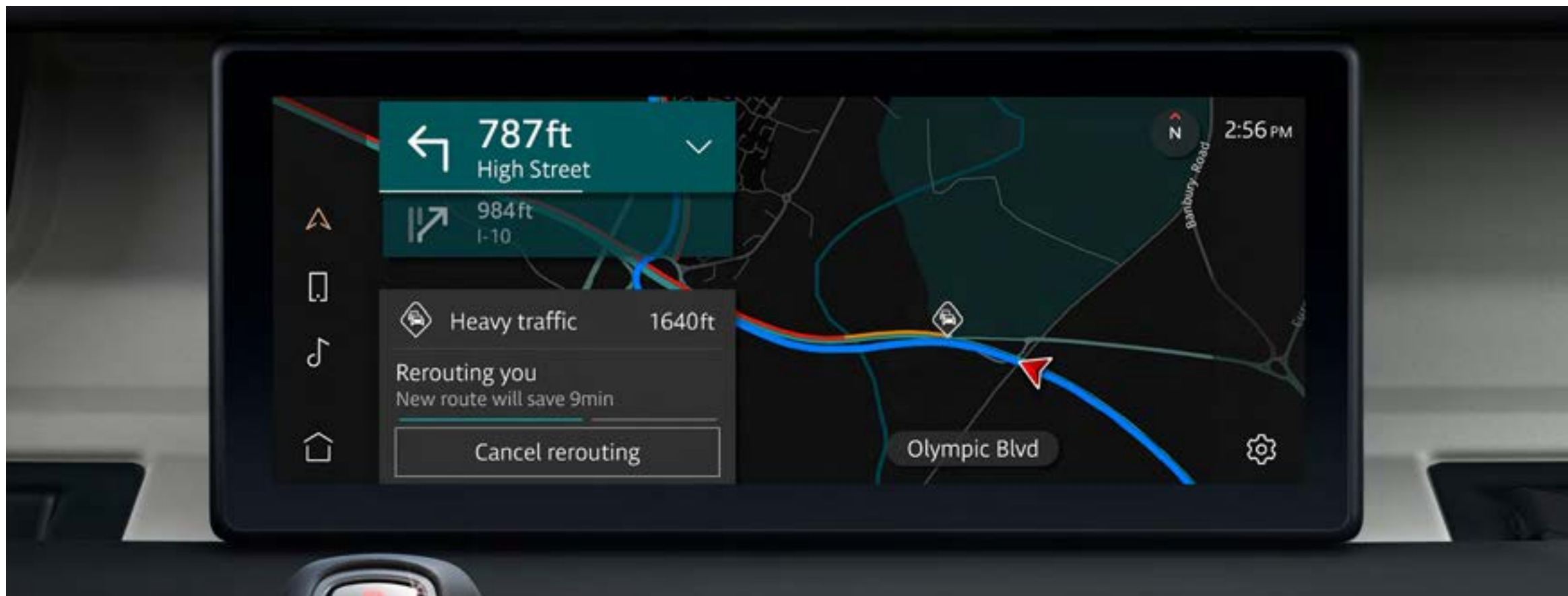
The Defender navigation system ensures you're always in touch with the rest of the world. It uses machine learning to adapt guidance based on your familiarity with the roads and the real-time traffic conditions. Dynamic route assistance will even propose an alternative route if a faster one becomes available. And, what's more? Thanks to regular automatic map downloads<sup>2</sup>, the maps are always up to date\*.



\*These systems are not a substitute for driving safely with due care and attention and will not function under all circumstances, speeds, weather and road conditions, etc. Driver should not assume that these features will correct errors of judgment in driving. Please consult the owner's manual or your local authorized Land Rover Retailer for more details.

<sup>1</sup>Contains subscription services that can be extended after the initial term advised by your Land Rover Retailer. <sup>2</sup>When connected to Wi-Fi or to a data plan.

Certain Pivi Pro features require an appropriate SIM card and a data plan with separate terms and conditions and may require an additional subscription after an initial term. Mobile connectivity cannot be guaranteed in all locations. Do not use such features under conditions that will affect your safety or the safety of others. Driving while distracted can result in loss of vehicle control.



DESIGN

ACCESSORY PACKS

CAPABILITY

PRACTICALITY

TECHNOLOGY

PERSONALIZATION

Save your favorite places. Use tap, swipe or pinch-to-zoom gestures for simple map exploration. Rubber-band Routing lets you easily tailor calculated routes by dragging the route line to alternative roads. The Remote app allows you to set a destination in the comfort of your home and is ready for when you get inside the vehicle.



Certain Pivi Pro features require an appropriate sim card and a data plan with separate terms and conditions and may require an additional subscription after an initial term. Mobile connectivity cannot be guaranteed in all locations. Do not use such features under conditions that will affect your safety or the safety of others. Driving while distracted can result in loss of vehicle control.

Driving while distracted can result in loss of vehicle control. Do not operate, adjust or view the navigation or multimedia systems under conditions that will affect your safety or the safety of others. Only use mobile phones and other devices, even with voice commands, when it is safe to do so.



## CONNECTIVITY

### Smartphone Pack<sup>1</sup>

Allows vehicle optimized apps on your smartphone to be controlled through the Touchscreen\*, including your contacts, calendar and music player.

### Wireless Device Charging<sup>1</sup>

Packaged into the center console, in front of the armrests and behind the cupholders, you can easily charge your smartphone without having to plug it in.

### Software Updates

Defender stays up to date through Software Updates<sup>2</sup>. The vehicle's infotainment, telematics and various control modules can all be updated remotely to help ensure optimal performance.

\*Driving while distracted can result in loss of vehicle control. Do not operate, adjust or view the navigation or multimedia systems under conditions that will affect your safety or the safety of others. Only use mobile phones and other devices, even with voice commands, when it is safe to do so.

<sup>1</sup>Standard on all 110 derivatives. <sup>2</sup>When connected to Wi-Fi or to a mobile network.

Certain Pivi Pro features require an appropriate sim card and a data plan with separate terms and conditions and may require an additional subscription after an initial term. Mobile connectivity cannot be guaranteed in all locations. Do not use such features under conditions that will affect your safety or the safety of others. Driving while distracted can result in loss of vehicle control.



DESIGN

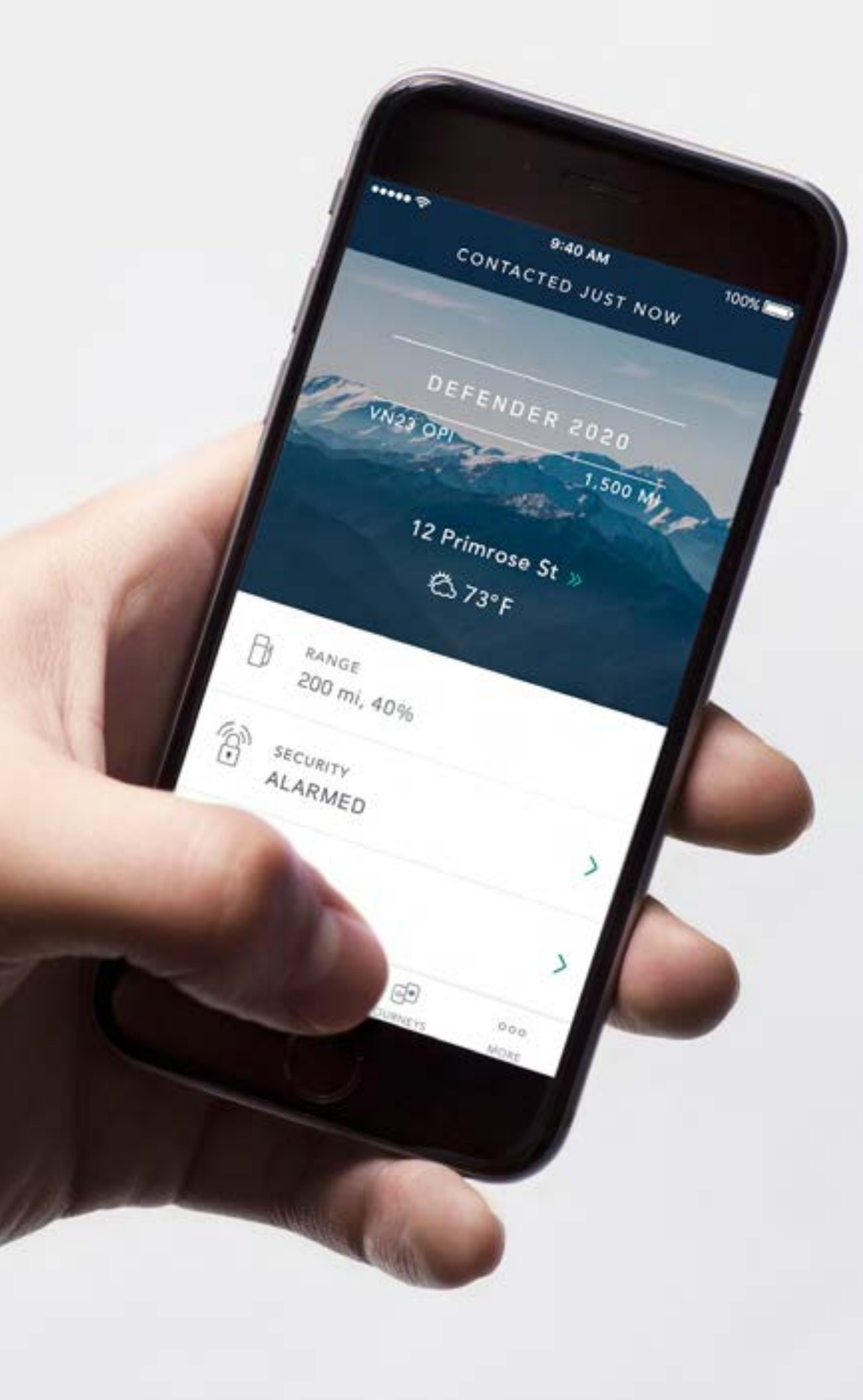
ACCESSORY PACKS

CAPABILITY

PRACTICALITY

TECHNOLOGY

PERSONALIZATION



## REMOTE

The Remote\* app provides information on Land Rover Defender, enabling you to interact with it even when you are not with your vehicle. Compatible with most smartphones and smartwatches, this service includes:

**Remote Lock/Unlock**

**Remote Climate**

**Beep/Flash**

**Journey Tracking**

**Vehicle Status Check**

**Land Rover Optimized Assistance**

**SOS Emergency Call**

> [APP STORE](#)

> [GOOGLE PLAY STORE](#)

\*Do not use Land Rover Remote features under conditions that will affect your safety or the safety of others. Driving while distracted can result in loss of vehicle control.

Certain Pivi Pro features require an appropriate sim card and a data plan with separate terms and conditions and may require an additional subscription after an initial term. Mobile connectivity cannot be guaranteed in all locations. Do not use such features under conditions that will affect your safety or the safety of others. Driving while distracted can result in loss of vehicle control.

Remote contains subscription services that can be extended after the initial term advised by your Land Rover Retailer. Requires a mobile signal. Remote climate is subject to local regulations.



DESIGN

ACCESSORY PACKS

CAPABILITY

PRACTICALITY

TECHNOLOGY

PERSONALIZATION

## ONLINE PACK WITH DATA PLAN

Stay truly connected. You'll enjoy access to everything you need, seamlessly integrated within Pivi Pro - including unlimited data<sup>1</sup> for online media music streaming, weather updates and calendar information. It's all designed to keep you informed and entertained. At all times\*.

## WI-FI ENABLED WITH DATA PLAN

With Wi-Fi Enabled with data plan<sup>1</sup>, you'll be able to keep in touch with friends and family, and keep everyone entertained with video streaming. Even when you are on the road less travelled. Wi-Fi uses the external antenna for the best possible connection.

\*These systems are not a substitute for driving safely with due care and attention and will not function under all circumstances, speeds, weather and road conditions, etc. Driver should not assume that these systems will correct errors of judgment in driving. Please consult the owner's manual or your local authorized Land Rover Retailer for more details.

<sup>1</sup>Fair usage policy applies. After 20GB of data is used within a month, data speeds on vehicle may be reduced for the rest of the month.

Certain Pivi Pro features require an appropriate SIM card and a data plan with separate terms and conditions and may require an additional subscription after an initial term. Mobile connectivity cannot be guaranteed in all locations. Do not use such features under conditions that will affect your safety or the safety of others. Driving while distracted can result in loss of vehicle control



DESIGN

ACCESSORY PACKS

CAPABILITY

PRACTICALITY

TECHNOLOGY

PERSONALIZATION

## BRIGHTER LIGHTS. FOR NIGHT-TIME DRIVING

Defender features all-round exterior LED lighting as standard. LED lights are designed to last the lifetime of the vehicle and are more fuel-efficient as they use less energy. The quality of light produced is closer to daylight conditions, so driving at night becomes less tiring. Premium LED headlights\* feature the distinct exterior graphic of the signature Daytime Running Lights (DRL) and twice as many LEDs as the standard unit. This increases the light output so you can see even better in the dark.

\*Standard on Defender SE, HSE and X only. Not available on all other models.



DESIGN

ACCESSORY PACKS

CAPABILITY

PRACTICALITY

TECHNOLOGY

PERSONALIZATION

## CLEAR SIGHT GROUND VIEW\*

Thick forest terrain. The odd bough and boulder scattered across the muddy track. How do you get through with greater confidence?

Available as part of the 3D Surround Camera system, ClearSight Ground View gives you confidence when maneuvering around any obstacles. Even bollards in the city. This feature displays a camera view of the front underside of the vehicle on the large central Touchscreen\*\* - in normal circumstances, this area would be invisible to the driver.

\*This feature is not a substitute for safe and attentive driving, and driver should not assume that it will correct errors of judgment in driving. Consult the owner's manual for more details. \*\*Driving while distracted can result in loss of vehicle control. Do not operate, adjust or view the navigation or multimedia systems under conditions that will affect your safety or the safety of others. Only use mobile phones and other devices, even with voice commands, when it is safe to do so.

Accessories shown: Adventure Pack with Fixed Side Steps and 'A' Frame Protection Bar upgrades (Upgrades available mid-2020). Cross Bars also shown.





## CLEAR SIGHT INTERIOR REAR VIEW MIRROR

If the trunk is piled high with equipment and you can't see a thing through the rear window?

The Defender ClearSight\* interior rear view mirror uses a live video feed so you can see the path, or convoy, behind you. This is regardless of equipment or passengers in the back who may be blocking your vision.

\*Customers who wear varifocal or bifocal lenses may have issues adjusting to the mirror's digital mode. The normal mirror mode, however, can be used at any time. This feature is not a substitute for safe and attentive driving, and driver should not assume that it will correct errors of judgment in driving. Consult the owner's manual for more details.

Optional feature, subject to local regulations.



DESIGN

ACCESSORY PACKS

CAPABILITY

PRACTICALITY

TECHNOLOGY

PERSONALIZATION



## HOW DOES MUSIC MAKE YOU FEEL?

Music has the power to change your mood, evoke memories and affect your wellbeing. It can give you tingles or make you cry. It's why music and cars go so well together. Sitting behind the wheel, listening to your favorite artist, band or composer. It's your space. Your world.

But what if you could do more than simply listen to the music? What if you could feel it, experience it, immerse yourself in it? What if you could make more of a connection with the music and enjoy a greater sense of acoustic involvement in your Land Rover?

British-based Meridian™ Audio are all about the musical experience - the very sense of being there. Their award-winning, precision-engineered audio systems are built on a lifetime of research into psychoacoustics (the science of how the human brain perceives sound) to deliver a performance that is so true to life, you feel every beat, every breath.



DESIGN

ACCESSORY PACKS

CAPABILITY

PRACTICALITY

TECHNOLOGY

PERSONALIZATION

## MERIDIAN™

Whatever your musical tastes, you'll feel more with one of our sound systems. There are three to choose from: our six-speaker system delivers rich bass notes and crystal-clear highs. With 10 speakers and a subwoofer, the Meridian Sound System<sup>1</sup> delivers exceptional definition. While the Meridian Surround Sound System<sup>2</sup> with 14 speakers and a subwoofer envelops you in the clearest, most engaging and authentic sound. It's like being there. Only you're in a Defender.

EXPLORE MERIDIAN

<sup>1</sup>Available as part of a pack. <sup>2</sup>Model dependent.

Meridian is a registered trademark of Meridian Audio Ltd. Trifield™ and the "three fields" device is a trademark of Trifield Productions Ltd.



### 1. SOUND SYSTEM

6 SPEAKERS 180W AMPLIFIER POWER



### 2. MERIDIAN SOUND SYSTEM

10 SPEAKERS 1 SUBWOOFER 400W AMPLIFIER POWER



### 3. MERIDIAN SURROUND SOUND SYSTEM

14 SPEAKERS 1 SUBWOOFER 700W AMPLIFIER POWER



DESIGN

ACCESSORY PACKS

CAPABILITY

PRACTICALITY

TECHNOLOGY

PERSONALIZATION

## DRIVER ASSISTANCE

The Land Rover Defender has been built using our advanced technologies and driver assistance features. The more you use them, the more you'll find they don't take over your drive, they simply help take the stress out of it - that's got to be good. All the following are standard:

**A comprehensive system of six airbags\*** including driver and passenger airbags, side curtain and thorax airbags to help protect occupants.

**Emergency Braking\*\*** can detect an imminent forward collision with other vehicles or pedestrians and can assist to mitigate the potential for a collision.

**Cruise Control and Speed Limiter†** allows you to maintain the current speed of the vehicle without the need to continually use the accelerator pedal.

**Lane Keep Assist†** detects when your vehicle is unintentionally drifting out of lane and will apply a corrective torque to the steering wheel to encourage you to guide your vehicle back.

**Driver Condition Monitor†** detects when you're starting to feel drowsy and gives an early warning to take a break.

**Blind Spot Assist†** helps if your Defender detects another car in your blind spot when you begin to change lanes, by automatically applying a rotational force to the steering wheel - indicating a steering correction should be made.

**Wade Sensing†<sup>A</sup>** uses ultrasonic sensors in the door mirrors to provide real-time pictorial

information about the water depth when wading. The system lets you know when water levels are near the 35.4" maximum wading depth.

**Traffic Sign Recognition†** keeps you informed of speed limits<sup>††</sup> and 'no overtaking' signs by displaying them clearly in the instrument cluster. When activated, Adaptive Speed Limiter uses recognized speed limits to adjust your vehicle's speed accordingly.

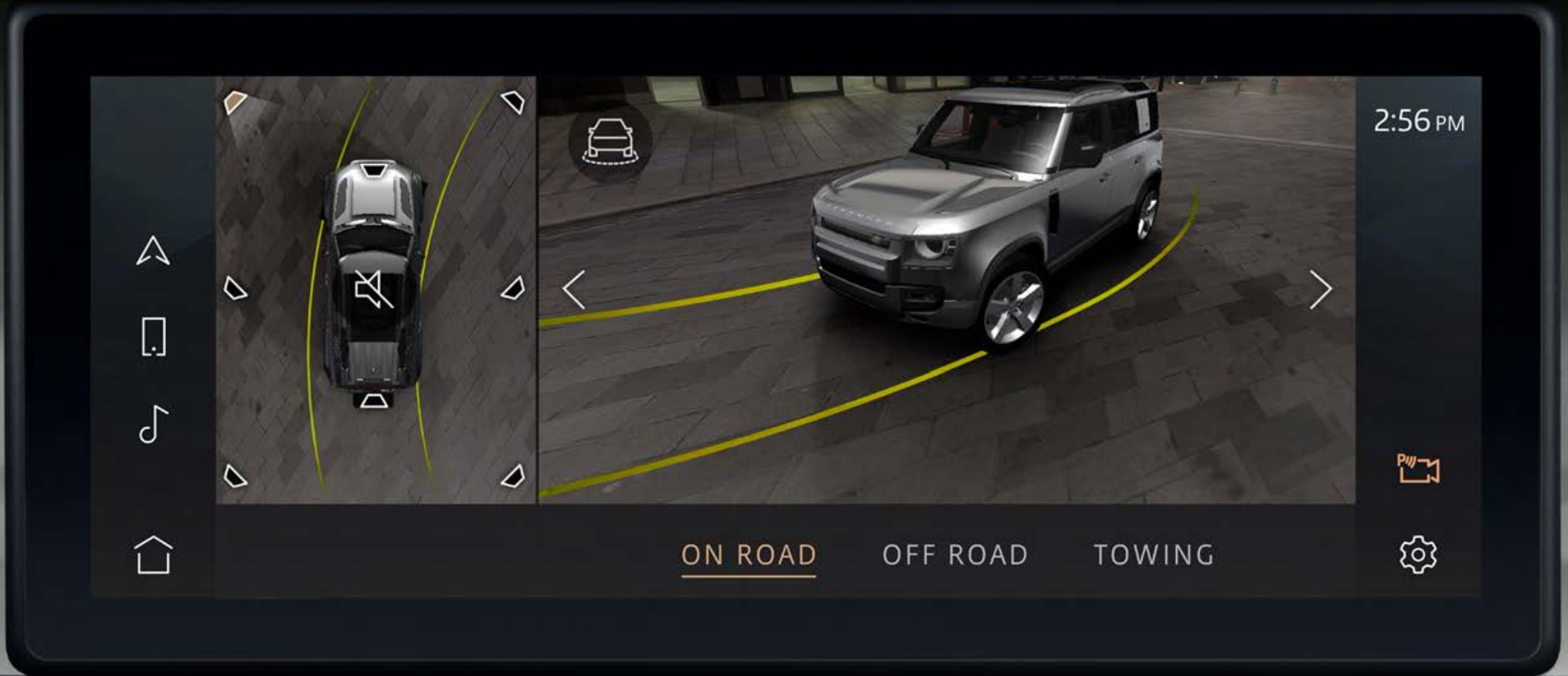
**3D Surround Camera†** helps you see more around the vehicle. 3D exterior perspectives alongside a 360° overhead view make manoeuvring easier, while off-road views including the innovative ClearSight Ground View provide you with greater clarity when scaling various terrains. (3D Surround Camera also includes Wade Sensing and ClearSight Ground View).

\*Please remember that the safety belts in a vehicle constitute the primary protection system for driver and passengers in collisions. Airbags are not designed to deploy in all collisions. The airbag Supplemental Restraint System (SRS) is a supplement to the safety belts and is designed to work as a system with the safety belts. Although airbags provide additional protection, airbags without safety belts do not provide optimal protection in a crash. Always wear your safety belts. Children younger than 13 years old should always be properly restrained in a back seat, away from airbags. Never place an infant seat in the front seat. \*\*Please note that if any action is taken, even minimal steering, the Emergency Braking system will assume the driver resumed control of the vehicle and the system will automatically disengage. †These systems are not a substitute for driving safely with due care and attention and will not function under all circumstances, speeds, weather and road conditions, etc. Driver should not assume that these features will correct errors of judgment in driving. Please consult the owner's manual or your local authorized Land Rover Retailer for more details. ††Always follow local speed limits. <sup>A</sup>Driving in floodwaters or moving in water should be avoided. Driving through water can be extremely dangerous. The Wade Sensing feature only detects depth of water ahead of around the vehicle. Therefore Wade Sensing cannot predict whether it is safe to proceed and cannot detect steep drops in grade around the vehicle. The driver is responsible for determining the conditions of the route being driven.

Vehicle shown is Defender 110 X in Gondwana Stone.



# 3D SURROUND CAMERA



## DRIVER ASSIST PACK (OPTIONAL)

Features Adaptive Cruise Control, Clear Exit Monitor and Rear Traffic Monitor.



**Adaptive Cruise Control\*** - Will automatically keep your vehicle a safe distance from the vehicle in front, should it slow or stop when you're cruising or travelling in slow-moving traffic. If the vehicle in front stops, your vehicle will slow down and come to a halt behind it.

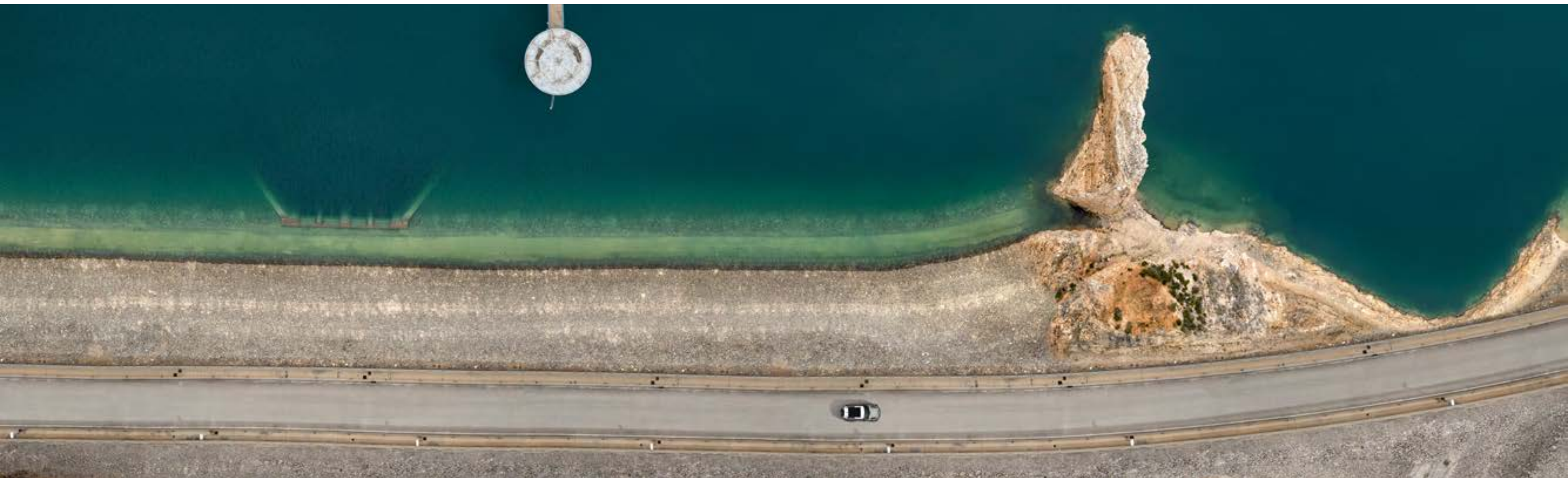


**Clear Exit Monitor\*** - Helps passengers by alerting them as they exit from the rear doors of the Defender of approaching hazards, such as passing vehicles and cyclists.



**Rear Traffic Monitor** - Warns you of vehicles, pedestrians or other hazards approaching from either side. Particularly useful when reversing out of a parking bay.

\*These systems are not a substitute for driving safely with due care and attention and will not function under all circumstances, speeds, weather and road conditions, etc. Driver should not assume that these features will correct errors of judgment in driving. Please consult the owner's manual or your local authorized Land Rover Retailer for more details.



DESIGN

ACCESSORY PACKS

CAPABILITY

PRACTICALITY

TECHNOLOGY

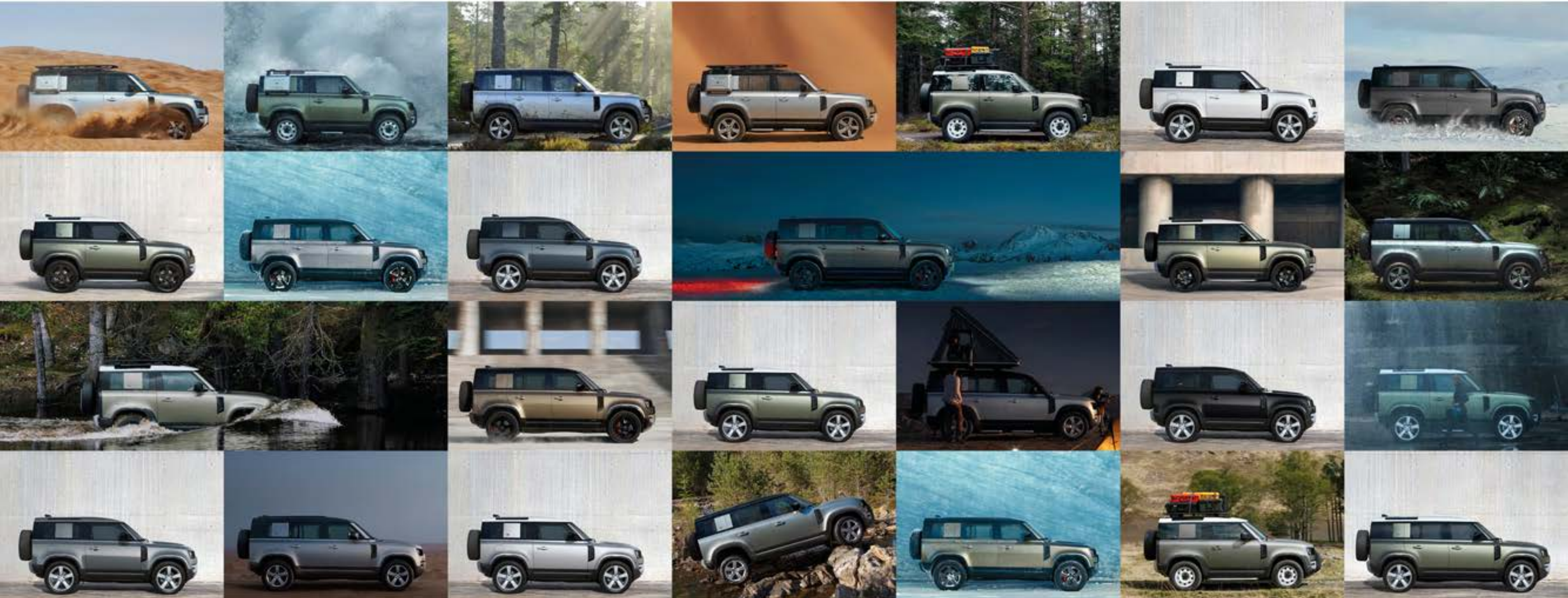
PERSONALIZATION

# PERSONALIZATION

[BUILD YOUR OWN](#)

From a choice of exterior colors to a raft of accessories, the Land Rover Defender is the ultimate expression of individuality. Go on. Make it yours.

[EXPLORE ACCESSORIES](#)



DESIGN

ACCESSORY PACKS

CAPABILITY

PRACTICALITY

TECHNOLOGY

PERSONALIZATION

# DEFENDER 90 FIRST EDITION

## KEY FEATURES

### Exterior Features

Pangea Green Metallic Paint  
White contrast roof  
Folding fabric roof  
Black Roof Rails  
Premium LED headlights with signature DRL  
First Edition badge  
Front fog lights  
Keyless Entry

### Wheels and Tires

20" Style 5098, 5 spoke, Gloss Silver Finish  
Off-road tires

### Capability

All Wheel Drive  
Twin-speed Transfer Box  
Electronic Air Suspension with Adaptive Dynamics  
Terrain Response  
Tow Hitch Receiver  
Configurable Terrain Response

### Interior Features

Heated standard leather steering wheel  
Cross car beam in Light Grey Powder Coat Brushed finish  
Front jump seat

Garage Door Opener (HomeLink®)  
ClearSight interior rear view mirror  
Metal Treadplates with First Edition branding

### Seating and Interior Trim

Ebony Grained leather and Robust Woven Textile seat facings, 12-way heated, electric memory front seats with 2-way manual headrests

### Infotainment

10" Pivi Pro with Interactive Driver Display  
Sirius XM™ satellite radio and HD radio  
Smartphone Pack  
Connected Navigation Pro  
Meridian™ Sound System 400W with 10 speakers plus subwoofer

### Driver Assistance

Blind Spot Assist  
3D Surround Camera  
360° Parking Aid  
Wade Sensing  
Lane Keep Assist  
Emergency Braking  
Traffic Sign Recognition and Adaptive Speed Limiter

Specifications described as unique to Land Rover Defender First Edition may be available separately or in combination in second and subsequent model years.

Please note that standard features may be replaced when selecting alternative trim levels. Standard features may also vary depending on country of purchase, engine variant and transmission. These systems are not a substitute for driving safely with due care and attention and will not function under all circumstances speeds, weather and road conditions, etc. Driver should not assume that these systems will correct errors of judgment in driving. Please consult the owner's manual or your local authorized Land Rover Retailer for more details. Driving while distracted can result in loss of vehicle control. Do not operate adjust or view the navigation or multimedia systems under conditions that will affect your safety or the safety of others. Only use mobile phones and other devices, even with voice commands, when it is safe to do so.



DESIGN

ACCESSORY PACKS

CAPABILITY

PRACTICALITY

TECHNOLOGY

PERSONALIZATION

# DEFENDER 110 FIRST EDITION

## KEY FEATURES

### Exterior Features

- Black contrast roof
- Sliding panoramic roof
- Black Roof Rails
- Premium LED headlights with signature DRL
- First Edition badge
- Black Exterior Pack
- Front fog lights
- Keyless Entry

### Wheels and Tires

- 20" Style 5098, 5 spoke, Gloss Silver Finish
- All-season tires (Off-road tires shown in image)

### Capability

- All Wheel Drive
- Twin-speed Transfer Box
- Electronic Air Suspension with Adaptive Dynamics
- Terrain Response 2
- Configurable Terrain Response

### Interior Features

- Heated standard leather steering wheel
- Cross car beam in Light Grey Powder Coat Brushed finish
- Front center console refrigerator compartment

- Garage Door Opener (HomeLink®)
- ClearSight interior rear view mirror
- Metal Treadplates with First Edition branding
- Domestic Plug Socket

### Seating and Interior Trim

- Grained leather and Robust Woven Textile seat facings, 12-way heated, electric memory front seats with 2-way manual headrests

### Infotainment

- 10" Pivi Pro with Interactive Driver Display
- Sirius XM™ satellite radio and HD radio
- Smartphone Pack
- Connected Navigation Pro
- Meridian™ Sound System 400W with 10 speakers plus subwoofer
- Wireless Device Charging

### Driver Assistance

- Blind Spot Assist
- 3D Surround Camera
- 360° Parking Aid
- Wade Sensing
- Lane Keep Assist
- Emergency Braking
- Traffic Sign Recognition and Adaptive Speed Limiter

Specifications described as unique to Land Rover Defender First Edition may be available separately or in combination in second and subsequent model years.

Please note that standard features may be replaced when selecting alternative trim levels. Standard features may also vary depending on country of purchase, engine variant and transmission. These systems are not a substitute for driving safely with due care and attention and will not function under all circumstances speeds, weather and road conditions, etc. Driver should not assume that these systems will correct errors of judgment in driving. Please consult the owner's manual or your local authorized Land Rover Retailer for more details. Driving while distracted can result in loss of vehicle control. Do not operate adjust or view the navigation or multimedia systems under conditions that will affect your safety or the safety of others. Only use mobile phones and other devices, even with voice commands, when it is safe to do so.



DESIGN

ACCESSORY PACKS

CAPABILITY

PRACTICALITY

TECHNOLOGY

PERSONALIZATION



# DEFENDER

## STANDARD FEATURES

### Exterior Features

Body-colored roof  
LED headlights  
Black Roof Rails  
Keyless Entry  
Body-colored door handles  
Heated, electric, power fold door mirrors with approach lights and auto-dimming

### Wheels and Tires

18" Style 5093, Gloss White Steel  
All-season tires

### Capability

All Wheel Drive  
Twin-speed Transfer Box  
Electronic Air Suspension with Adaptive Dynamics  
Terrain Response

### Interior Features

Cross car beam in Light Grey Powder Coat Brushed finish  
Center console with armrest  
Garage Door Opener (HomeLink®)  
Standard leather steering wheel and gearshift  
Auto-dimming interior rear view mirror  
Carpet Mats

### Seating and Interior Trim

Fabric 8-way semi-powered front seats

### Infotainment

10" Pivi Pro  
Smartphone Pack  
Connected Navigation Pro  
Sound System 180W with 6 speakers  
Wireless Device Charging

### Driver Assistance

3D Surround Camera  
360° Parking Aid  
Wade Sensing  
Cruise Control and Speed Limiter  
Lane Keep Assist  
Emergency Braking  
Traffic Sign Recognition and Adaptive Speed Limiter  
Blind Spot Assist

Please note that standard features may be replaced when selecting alternative trim levels. Standard features may also vary depending on country of purchase, engine variant and transmission. These systems are not a substitute for driving safely with due care and attention and will not function under all circumstances speeds, weather and road conditions, etc. Driver should not assume that these systems will correct errors of judgment in driving. Please consult the owner's manual or your local authorized Land Rover Retailer for more details. Driving while distracted can result in loss of vehicle control. Do not operate adjust or view the navigation or multimedia systems under conditions that will affect your safety or the safety of others. Only use mobile phones and other devices, even with voice commands, when it is safe to do so.



DESIGN

ACCESSORY PACKS

CAPABILITY

PRACTICALITY

TECHNOLOGY

PERSONALIZATION

# DEFENDER S

## FEATURES IN ADDITION TO DEFENDER

### Exterior Features

LED headlights with Auto High Beam Assist

### Wheels and Tires

19" Style 6010, 6 spoke, Gloss Silver Finish

### Seating and Interior Trim

Grained leather and Robust Woven Textile seat facings, 12-way semi-powered front seats

### Infotainment

10" Pivi Pro with Interactive Driver Display

Click & Go integrated base unit

Please note that standard features may be replaced when selecting alternative trim levels. Standard features may also vary depending on country of purchase, engine variant and transmission. These systems are not a substitute for driving safely with due care and attention and will not function under all circumstances speeds, weather and road conditions, etc. Driver should not assume that these systems will correct errors of judgment in driving. Please consult the owner's manual or your local authorized Land Rover Retailer for more details. Driving while distracted can result in loss of vehicle control. Do not operate adjust or view the navigation or multimedia systems under conditions that will affect your safety or the safety of others. Only use mobile phones and other devices, even with voice commands, when it is safe to do so.



DESIGN

ACCESSORY PACKS

CAPABILITY

PRACTICALITY

TECHNOLOGY

PERSONALIZATION

# DEFENDER SE

## FEATURES IN ADDITION TO DEFENDER S

### Exterior Features

Premium LED headlights with signature DRL  
Front fog lights

### Wheels and Tires

20" Style 5094, 5 spoke, Gloss Silver Finish

### Interior Features

ClearSight interior rear view mirror  
Electric steering column

### Seating and Interior Trim

Grained leather and Robust Woven Textile seat facings, 12-way electric memory front seats with 2-way manual headrests

### Infotainment

Meridian™ Sound System 400W with 10 speakers plus subwoofer

### Driver Assistance

Rear Traffic Monitor  
Clear Exit Monitor

Please note that standard features may be replaced when selecting alternative trim levels. Standard features may also vary depending on country of purchase, engine variant. These systems are not a substitute for driving safely with due care and attention and will not function under all circumstances speeds, weather and road conditions, etc. Driver should not assume that these systems will correct errors of judgment in driving. Please consult the owner's manual or your local authorized Land Rover Retailer for more details. Driving while distracted can result in loss of vehicle control. Do not operate adjust or view the navigation or multimedia systems under conditions that will affect your safety or the safety of others. Only use mobile phones and other devices, even with voice commands, when it is safe to do so.



DESIGN

ACCESSORY PACKS

CAPABILITY

PRACTICALITY

TECHNOLOGY

PERSONALIZATION

# DEFENDER HSE

## FEATURES IN ADDITION TO DEFENDER SE

### Exterior Features

Sliding panoramic roof

### Wheels and Tires

20" Style 5095, 5 split-spoke, Gloss Dark Grey with contrast Diamond Turned finish

### Interior Features

Leather steering wheel

Extended Leather Upgrade

### Seating and Interior Trim

Windsor leather, 14-way heated and cooled electric memory front seats with 4-way manual headrests

### Driver Assistance

Driver Assist Pack

Please note that standard features may be replaced when selecting alternative trim levels. Standard features may also vary depending on country of purchase, engine variant and transmission. These systems are not a substitute for driving safely with due care and attention and will not function under all circumstances speeds, weather and road conditions, etc. Driver should not assume that these systems will correct errors of judgment in driving. Please consult the owner's manual or your local authorized Land Rover Retailer for more details. Driving while distracted can result in loss of vehicle control. Do not operate adjust or view the navigation or multimedia systems under conditions that will affect your safety or the safety of others. Only use mobile phones and other devices, even with voice commands, when it is safe to do so.



DESIGN

ACCESSORY PACKS

CAPABILITY

PRACTICALITY

TECHNOLOGY

PERSONALIZATION

# DEFENDER X

Capability and off-road looks mean you can tackle even the most challenging conditions and terrains. There's tough. And then there's Defender X.

Vehicle shown is Defender 110 X Gondwana Stone.  
Accessories shown: Front Undershield. (Available mid-2020.)



DESIGN

ACCESSORY PACKS

CAPABILITY


PRACTICALITY

TECHNOLOGY

PERSONALIZATION



A range of capability enabling features as standard.

 BUILD YOUR OWN



DESIGN

ACCESSORY PACKS

CAPABILITY

PRACTICALITY

TECHNOLOGY

PERSONALIZATION

# DEFENDER X

## FEATURES IN ADDITION TO DEFENDER HSE

### Exterior Features

Black contrast roof and hood  
Starlight Satin Chrome exterior accents  
Orange brake calipers  
Rear recovery eyes

### Wheels and Tires

20" Style 5098, 5 spoke, Satin Dark Grey

### Capability

Electronic Active Differential  
Terrain Response 2  
Configurable Terrain Response

### Interior Features

Cross car beam in Dark Grey Powder Coat Brushed finish  
Premium Cabin Lighting

### Seating and Interior Trim

Windsor leather with Steelcut Premium Textile, 14-way heated and cooled electric memory front seats with 4-way manual headrests

### Infotainment

Meridian™ Surround Sound System 700W with 14 speakers plus subwoofer  
Head-up Display

Please note that standard features may be replaced when selecting alternative trim levels. Standard features may also vary depending on country of purchase, engine variant and transmission. These systems are not a substitute for driving safely with due care and attention and will not function under all circumstances speeds, weather and road conditions, etc. Driver should not assume that these systems will correct errors of judgment in driving. Please consult the owner's manual or your local authorized Land Rover Retailer for more details. Driving while distracted can result in loss of vehicle control. Do not operate adjust or view the navigation or multimedia systems under conditions that will affect your safety or the safety of others. Only use mobile phones and other devices, even with voice commands, when it is safe to do so.



DESIGN

ACCESSORY PACKS

CAPABILITY

PRACTICALITY

TECHNOLOGY

PERSONALIZATION

## EXTERIOR COLORS

Defender does take a nod to its origins. Its colors were influenced by earth or supercontinents, including Pangea and Gondwana. There's also Tasman Blue which is a modern reinvention of a heritage Defender color. An optional Satin Protective Film\* can also be applied to the vehicle's exterior. This can protect the paint from scratches and delivers a rich, Satin finish.

Configure your Defender online to view the range of paint colors and finishes.

\*Linked feature with Contrast Roof.

[BUILD YOUR OWN](#)

SATIN FINISH (AS SHOWN) OR METALLIC

PANGEA GREEN



GONDWANA STONE



INDUS SILVER



METALLIC

TASMAN BLUE



EIGER GREY



SANTORINI BLACK



SOLID

FUJI WHITE



DESIGN

ACCESSORY PACKS

CAPABILITY

PRACTICALITY

TECHNOLOGY

PERSONALIZATION



## ROOF OPTIONS

When open, the folding fabric roof lets you truly feel part of your surroundings. Closed, it adds to your sense of privacy and protection from the elements. Flooding the interior with natural light, the sliding panoramic roof provides a spacious feel to the interior and a seamless connection to the world outside.

\*Model dependent.

FOLDING FABRIC ROOF (DEFENDER 90 ONLY)



SLIDING PANORAMIC ROOF\*



FIXED METAL ROOF



DESIGN

ACCESSORY PACKS

CAPABILITY

PRACTICALITY

TECHNOLOGY

PERSONALIZATION

## INTERIOR COLORS

Four interior color combinations and a range of seat materials to choose from.



DESIGN

ACCESSORY PACKS

CAPABILITY

PRACTICALITY

TECHNOLOGY

PERSONALIZATION

# EBONY/EBONY

Interior shown is Defender 110 with Ebony fabric seats and Ebony interior with cross car beam in Light Grey Powder Coat Brushed finish.



DESIGN

ACCESSORY PACKS

CAPABILITY

PRACTICALITY

TECHNOLOGY

PERSONALIZATION

# ACORN/LUNAR

Interior shown is Defender 110 First Edition with Acorn grained leather seat facings with Robust Woven Textile accent and Lunar interior with cross car beam in Light Grey Powder Coat Brushed finish.



DESIGN

ACCESSORY PACKS

CAPABILITY

PRACTICALITY

TECHNOLOGY

PERSONALIZATION

## KHAKI/EBONY

Interior shown is Defender 110 First Edition with Khaki grained leather seat facings with Robust Woven Textile accent and Ebony interior with cross car beam in Light Grey Powder Coat Brushed finish.



DESIGN

ACCESSORY PACKS

CAPABILITY

PRACTICALITY

TECHNOLOGY

PERSONALIZATION

## VINTAGE TAN/EBONY (DEFENDER X ONLY)

Interior shown is Defender 110 X with Vintage Tan/Ebony Windsor leather and Steelcut premium textile seats and Ebony interior with cross car beam in Dark Grey Powder Coat Brushed finish.



DESIGN

ACCESSORY PACKS

CAPABILITY

PRACTICALITY

TECHNOLOGY

PERSONALIZATION

## WHEELS & TIRES

There's a choice of 12 wheels across four sizes (18" - 22"), including our 18" White steel wheels. With an 32" diameter, our toughest and most durable tire family yet comes as standard.

The full-size spare wheel is mounted on the side-opening rear tailgate. So, it's easily accessible.



DESIGN

ACCESSORY PACKS

CAPABILITY

PRACTICALITY

TECHNOLOGY

PERSONALIZATION

18" STYLE 5093,  
GLOSS WHITE, STEEL



18" STYLE 5094,  
5 SPOKE, SATIN DARK GREY



19" STYLE 6009,  
6 SPOKE, GLOSS SILVER FINISH



19" STYLE 6010,  
6 SPOKE, GLOSS SILVER FINISH



19" STYLE 6010,  
6 SPOKE, GLOSS BLACK



20" STYLE 5094,  
5 SPOKE, GLOSS SILVER FINISH



DESIGN

ACCESSORY PACKS

CAPABILITY

PRACTICALITY

TECHNOLOGY

PERSONALIZATION



20" STYLE 5098, 5 SPOKE, GLOSS SILVER FINISH

Only available on Defender First Edition.



20" STYLE 5098, 5 SPOKE, SATIN DARK GREY



20" STYLE 6011, 6 SPOKE, GLOSS BLACK

Only available with All-season tires.



20" STYLE 5095, 5 SPLIT-SPOKE, GLOSS DARK GREY WITH CONTRAST DIAMOND TURNED FINISH

Only available with All-season tires.



22" STYLE 5098, 5 SPOKE, GLOSS BLACK

Only available with All-season tires.



22" STYLE 5098, 5 SPOKE, GLOSS SILVER FINISH

Only available with All-season tires.



DESIGN

ACCESSORY PACKS

CAPABILITY

PRACTICALITY

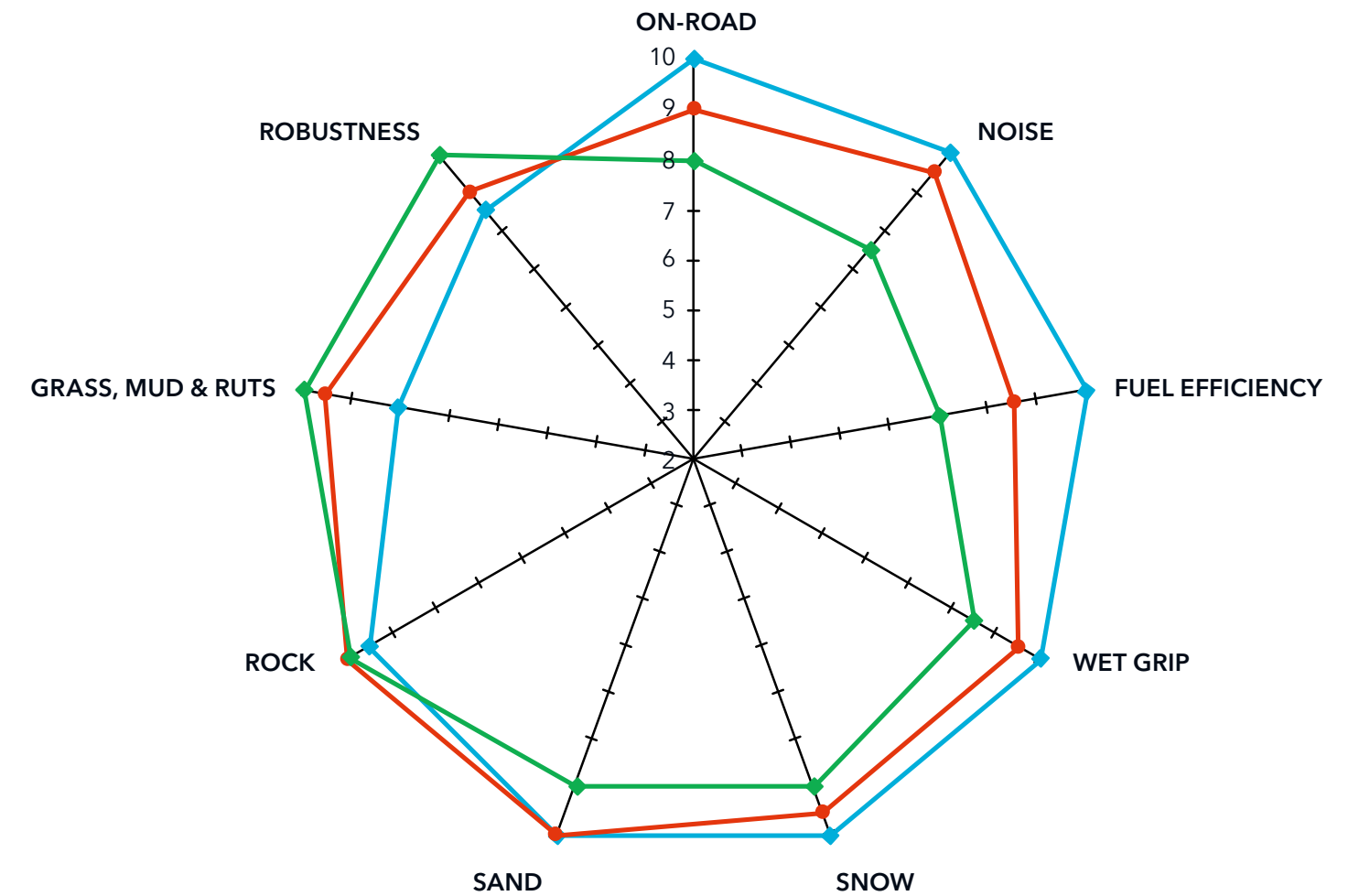
TECHNOLOGY

PERSONALIZATION



## TIRES

For the toughest demands. The most capable and tough vehicle needs tires which are just as robust. That's why Land Rover Defender is equipped with 32" diameter tires as standard. They improve ground clearance, off-road geometry and traction. An increased sidewall depth also means the vehicle is less prone to punctures and can withstand more damage.



Distance from the center indicates level of performance - 10 being best.

- ◆ All Season (Standard Fitment)
- ◆ Off-Road (Option Fitment)
- ◆ Professional Off-road (Retailer fitment only)



DESIGN

ACCESSORY PACKS

CAPABILITY

PRACTICALITY

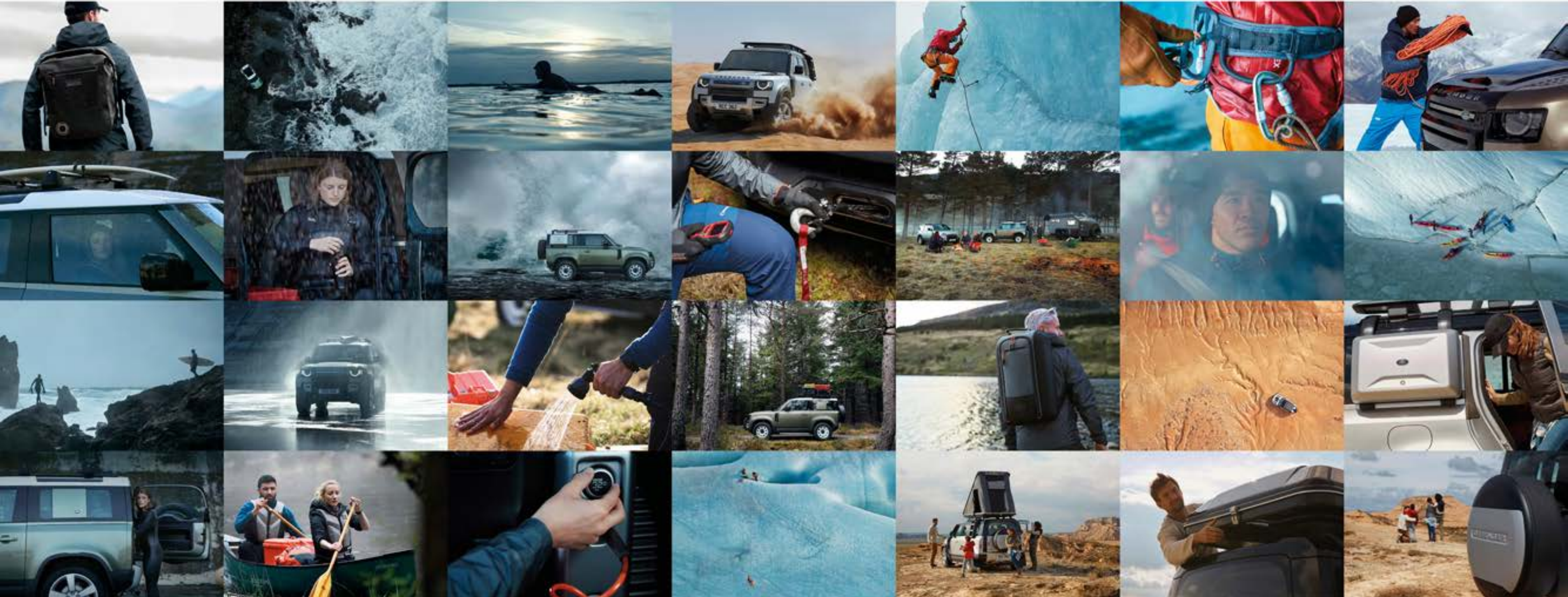
TECHNOLOGY

PERSONALIZATION

# ACCESSORIES

A world of accessories. Your way.

BUILD YOUR OWN



DESIGN

ACCESSORY PACKS

CAPABILITY

PRACTICALITY

TECHNOLOGY

PERSONALIZATION



**Inflatable Waterproof Awning<sup>1</sup>** - Can be quickly deployed and fits to either the side or rear of the vehicle.

**Checker Body Protection Kit** - Enjoy your adventure without worrying about the paintwork. This kit features additional protection for Defender's exterior.

**Deployable Side Steps<sup>1,2</sup>** - These smart, practical steps make it easier to get in and out of the vehicle. Neatly stored under the sills, the side steps automatically deploy as the door is opened, or when activated by the key fob.

**Integrated Air Compressor** - Fitted in the cargo space and can be used to inflate vehicle tires, bike tires, airbeds and other inflatable items.

**Luxury Carpet Mats** - Ebony, deep pile carpet mats with Bright finish Land Rover ingot branding. These durable mats also come fitted with protective rubber backing.

**Illuminated Treadplates** - The sill treadplates feature an illuminated DEFENDER script to the driver and front passenger side of the vehicle.

**Seat Covers** - Easily fitted and can be wiped clean. Help to protect seats from mud, dirt and wear and tear.



<sup>1</sup>Available mid-2020.

<sup>2</sup>Defender 110 only.



DESIGN

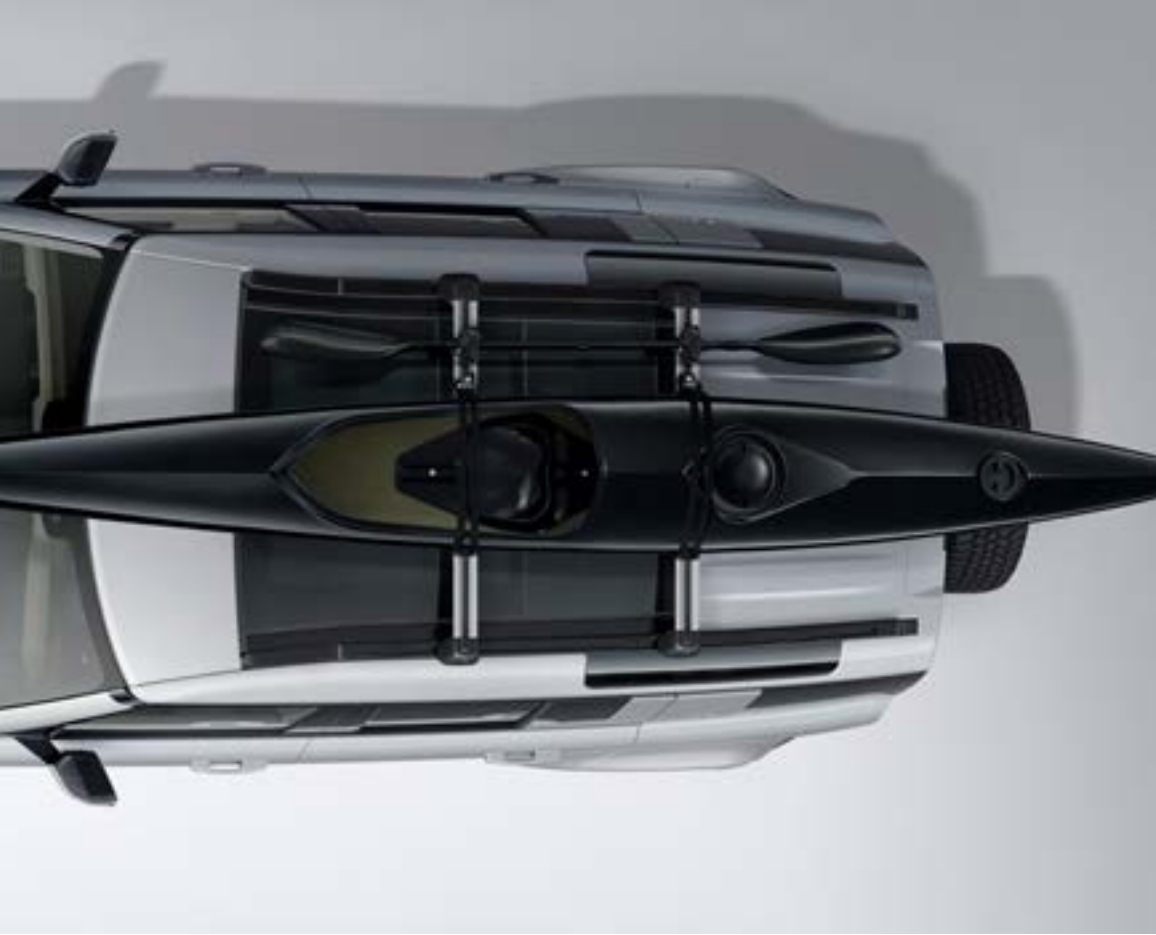
ACCESSORY PACKS

CAPABILITY

PRACTICALITY

TECHNOLOGY

PERSONALIZATION



**Aqua Sports Carrier\*** - Carries a sailboard, canoe or kayak. Includes lockable multi-purpose holder to carry oars or paddles. Tilts to facilitate easy loading/unloading. Features lockable straps and rubber supports to maintain optimum weight distribution while protecting the equipment and vehicle from scratches/scuffs. Maximum load capacity 99.2 lbs.

**Ski/Snowboard Carrier\*** - Carries four pairs of skis or two snowboards and incorporates slider rails for easy loading, is also lockable for security. Maximum load capacity 79.3 lbs.

**Wheel Mounted Bike Carrier\*** - Roof mounted, lockable bike carrier designed for holding a single bike, up to 44 lbs.

**Luggage Roof Box\*** - Power-click quick mounting system with integrated torque indicator for easy and secure fixation with a single-handed grip. Opens from both sides with handles on the lid and inside the box, for convenient fitting, loading and unloading. Integrated base mat for extra secure loading. 108.3 gallons capacity.

**Cross Bars\*\*** - Manufactured from anodised aluminum for premium appearance, they are easy to fit with torque control tool included. The pre-set positioning ensures the cross bars are fitted to the roof rails in the optimum position for weight distribution and dynamics, providing you with additional confidence in safe roof carrying. When fitted, the maximum carrying capacity of the cross bars is 207.2 lbs.



\*Requires Roof Rails and Cross Bars. \*\*Requires Roof Rails.



DESIGN

ACCESSORY PACKS

CAPABILITY

PRACTICALITY

TECHNOLOGY

PERSONALIZATION



## SAFE. COMFORTABLE. EVEN FOR YOUR PETS

**Pet Cargo Space Protection Pack\*** - Protect your cargo space from wet and muddy paws. This pack combines the Quilted Cargo Space Liner, Full Height Luggage Partition and Spill Resistant Water Bowl.

**Pet Transportation Pack\*** - Effortless. Anywhere. This pack allows you to transport your pets with absolute ease. It combines the Foldable Pet Carrier, Spill Resistant Water Bowl and Cargo Space Rubber Mat.

**Pet Care & Access Pack\*** - Ensure your pet has a comfortable and stress-free journey with the Full Height Luggage Partition, Quilted Cargo Space Liner, Pet Access Ramp and Portable Rinse System.

**Towing Receiver Kit** - Detachable square receiver for clean finish. Trailer hitch kit to be sourced locally. Approved for up to 8,201 lbs maximum towing capacity and 771.6 lbs nose load. Towing electrics are included. Kit includes: towing receiver, module, module bracket, harness and tow eye cover.



\*Defender 110 only.



DESIGN

ACCESSORY PACKS

CAPABILITY

PRACTICALITY

TECHNOLOGY

PERSONALIZATION

## ABOVE & BEYOND COLLECTION

Our Above and Beyond collection includes clothing and technical gifts. Each one proudly represents the vehicle's character.

Items from the Above and Beyond Collection are featured throughout this piece.

[EXPLORE THE COLLECTION](#)



DESIGN

ACCESSORY PACKS

CAPABILITY

PRACTICALITY

TECHNOLOGY

PERSONALIZATION



**Rodinia Hybrid Jacket** - Ultimate versatility. Both showerproof and windproof, with quick-burst zip technology that changes the jacket into a gilet in one quick motion.

**Above & Beyond Belt** - Featuring the world's safest and strongest ANSI COBRA® buckle, made from heavy-grade nylon, this item is supremely capable. Tested to extremes.

**Above & Beyond Pen** - Superbly crafted. Underwater, upside down, through extremes of heat and cold - made with aircraft-grade aluminum, it will write wherever you want.

**Reversible Base Layer** - Designed to keep you warm or cool, the base layer adapts to your environment. Constructed with Merino wool and high-performance fabrics with wicking qualities.

**Mirovia Seam Sealed Backpack** - Resiliently protective. Its large, water-resistant roll top and heat-sealed seamed construction help defend contents from the elements.

**Above & Beyond Flask** - Essential for all journeys, made from double-walled stainless steel with a 500 ml capacity. Robust construction for all environments with a paracord for ease of carrying.



DESIGN

ACCESSORY PACKS

CAPABILITY

PRACTICALITY

TECHNOLOGY

PERSONALIZATION



## PROUD PARTNERS

Tusk Trust - one of our prized partners for some 15 years - does truly remarkable work in the Borana Conservancy in Kenya. So where better to put Defender through additional tests? One of our prototypes went out there to tow heavy loads, wade through rivers and carry supplies across unforgiving terrain in a series of real-world trials at the 14,000-hectare reserve. Needless to say, the vehicle proved itself beyond any doubt.



DESIGN

ACCESSORY PACKS

CAPABILITY

PRACTICALITY

TECHNOLOGY

PERSONALIZATION



### BUILD YOUR OWN

Use the configurator to design your perfect Defender.



### FIND A RETAILER

Search for a Land Rover Retailer near you.



### COMPARE OUR VEHICLES

Select up to three Land Rover vehicles and compare them side by side.



### KEEP ME INFORMED

Sign up for all of the latest Land Rover news.

## YOUR PEACE OF MIND

> CUSTOMER SERVICE

> LAND ROVER ROADSIDE ASSISTANCE

> LAND ROVER FINANCIAL SERVICES

> LAND ROVER FLEET & BUSINESS



DESIGN

ACCESSORY PACKS

CAPABILITY

PRACTICALITY

TECHNOLOGY

PERSONALIZATION

IMPORTANT NOTICE: Jaguar Land Rover Limited is constantly seeking ways to improve the specification, design and production of its vehicles, parts and accessories, and alterations take place continually. While every effort is made to produce up-to-date literature, this brochure should not be regarded as an infallible guide to current specifications or availability, nor does it constitute an offer for the sale of any particular vehicle, part or accessory.

COLORS: Image colors reproduced here are provided for illustrative purposes only. Colors are reproduced on-screen and may therefore vary compared to the actual finish. The company reserves the right to alter or withdraw any color finish without notice. Some of these colors may not be obtainable in your country. Please check availability of colors and current specifications with your Land Rover Retailer. Distributors and Retailers are not agents of Jaguar Land Rover Limited and have absolutely no authority to bind Jaguar Land Rover Limited to any express or implied undertaking or representation.

Information and images displayed in relation to the InControl technology, including Touchscreen, App screens, or sequences are subject to regular software updates, version control and other system/visual changes depending on options selected.

Optional features and their availability may differ by vehicle specification (model and powertrain), or require the installation of other features in order to be fitted. Please contact your local Retailer for more details, or configure your vehicle online. and transmission. These systems are not a substitute for driving safely with due care and attention and will not function under all circumstances speeds, weather and road conditions, etc. Driver should not assume that these systems will correct errors of judgment in driving. Please consult the owner's manual or your local authorized Land Rover Retailer for more details. Driving while distracted can result in loss of vehicle control. Do not operate adjust or view the navigation or multimedia systems under conditions that will affect your safety or the safety of others. Only use mobile phones and other devices, even with voice commands, when it is safe to do so. Certain features require an appropriate SIM with a suitable data contract, which will require a further subscription after the initial term advised by your Retailer.

Castrol EDGE Professional exclusively recommended by Land Rover.

Android™ is a trademark of Google LLC.

ANSI Cobra © 2019 AUSTRIALPIN.

Apple® is a registered trademark of Apple Inc., registered in the US and other countries.

Meridian™ is a registered trademark of Meridian Audio Ltd. Trifield™ and the three fields device

is a trademark of Trifield Productions Ltd.

Musto® is a trademark of Musto Limited.

Vehicle shown is Defender 110 X in Gondwana Stone.

**Jaguar Land Rover North America, LLC**

100 Jaguar Land Rover Way  
Mahwah, NJ 07495-1100

landroverusa.com

© 2020 Jaguar Land Rover North America, LLC



DESIGN

ACCESSORY PACKS

CAPABILITY

PRACTICALITY

TECHNOLOGY

PERSONALIZATION

# THE NEW LAND ROVER DEFENDER

TECHNICAL SPECIFICATION 2020



ABOVE & BEYOND



## DEFENDER 90 TECHNICAL SPECIFICATION – GAS

### ENGINE

	P400 MHEV
Transmission	Automatic
Driveline	All Wheel Drive (AWD)
Maximum power (HP/rpm)	395 / 5,500
Maximum torque (lb ft/rpm)	406 / 2,000-5,000
Capacity (cc)	2,996
No. of cylinders/Valves per cylinder	6 / 4
Cylinder layout	In-line
Bore/stroke (in)	3.27 / 3.63
Compression ratio (:1)	10.5+ / -0.5
Fuel tank capacity - US gallons	23.4

### PERFORMANCE

Acceleration (secs) 0-60 mph	5.7
Maximum speed mph	119

### BRAKES

Front type	4 piston opposed 2 piece caliper
Front diameter mm	363
Rear type	Single piston sliding fist
Rear diameter mm	350
Park Brake	Integrated motor-on caliper

### WEIGHTS (lbs)\*

Seating	6
Curb weight	4,830
Gross Vehicle Weight (GVW)	6,610
Maximum Payload**	Up to 1,676

### TOWING (lbs)

Seating	6
Unbraked trailer	1,653
Maximum towing	8,201
Maximum coupling point/nose weight	330
Maximum vehicle and trailer combination	14,810

### ROOF CARRYING (lbs)

Maximum roof load (including cross bars)	176 / 220 <sup>†</sup>
Maximum dynamic roof load (including Expedition Roof Rack)	176 / 260 <sup>††</sup>
Maximum static roof load (including Expedition Roof Rack)	661

\*Weights reflect vehicles to standard specifications. Optional extras increase weight. \*\*Dependent on specifications and seating configuration. <sup>†</sup>Roof load allows for up to 220 lbs when fitted Off-road tires. <sup>††</sup>Dynamic roof load allows for up to 260 lbs when fitted with Off-road tires.

## DEFENDER 110 TECHNICAL SPECIFICATION – GAS

<b>ENGINE</b>	<b>P300</b>	<b>P400 MHEV</b>
Transmission	Automatic	Automatic
Driveline	All Wheel Drive (AWD)	All Wheel Drive (AWD)
Maximum power (HP/rpm)	296 / 5,500	395 / 5,500
Maximum torque (lb ft/rpm)	295 / 1,500-4,000	406 / 2,000-5,000
Capacity (cc)	1,997	2,996
No. of cylinders/Valves per cylinder	4 / 4	6 / 4
Cylinder layout	In-line	In-line
Bore/stroke (in)	3.27 / 3.63	3.27 / 3.63
Compression ratio (:1)	9.5+ / -0.5	10.5+ / -0.5
Fuel tank capacity - US gallons	23.8	23.8

## DEFENDER 110 TECHNICAL SPECIFICATION – GAS

### PERFORMANCE

	P300	P400 MHEV
Acceleration (secs) 0-60 mph	7.7	5.8*
Maximum speed mph	119	119 / 129**

### BRAKES

Front type	Twin piston sliding fist caliper	4 piston opposed 2 piece caliper
Front diameter mm	349	363
Rear type	Single piston sliding fist	Single piston sliding fist
Rear diameter mm	325	350
Park Brake	Integrated motor-on caliper	

### WEIGHTS (lbs)<sup>†</sup>

Seating	5 / 5 + 2	5 / 5 + 2
Curb weight	4,815 / 4,940	5,035 / 5,165 (5,260 / 5,385) <sup>††</sup>
Gross Vehicle Weight (GVW)	6,845 / 7,050	6,975 / 7,160
Maximum Payload <sup>‡</sup>	Up to 1,984	Up to 1,874

### TOWING (lbs)

Seating	5 / 5 + 2	5 / 5 + 2
Unbraked trailer	1,653	1,653
Maximum towing	7,716	8,201
Maximum coupling point/nose weight	330	330
Maximum vehicle and trailer combination	14,560 / 14,770	15,175 / 15,365

### ROOF CARRYING (lbs)

Maximum roof load (including cross bars)	176	176
Maximum dynamic roof load (including Expedition Roof Rack)	220 / 370 <sup>††</sup>	220 / 370 <sup>††</sup>
Maximum static roof load (including Expedition Roof Rack)	661	661

\*6.1 on P400 X models. \*\*Max speed is 129 mph when fitted with 22" wheels. <sup>†</sup>Weights reflect vehicles to standard specifications. Optional extras increase weight. <sup>††</sup>P400 X model. <sup>‡</sup>Dependent on specifications and seating configuration. <sup>†††</sup>Dynamic roof load allows for up to 370 lbs when fitted with Off-road tires.

# DEFENDER 90 DIMENSIONS AND CAPABILITY

## RIDE HEIGHT

With roof antenna 77.5 inches

## HEADROOM

Maximum front/rear headroom  
with standard roof 40.6 inches / 38.6 inches  
with panoramic roof 40.6 inches / 37.2 inches  
with folding fabric roof 40.6 inches / 37.2 inches

## LEGROOM

Maximum front legroom 39 inches  
Maximum rear legroom second row 36.6 inches

## CARGO SPACE CAPACITY

Height 35.6 inches, Width 46.6 inches  
Cargo space width between arches 44.3 inches  
Maximum cargo space volume  
behind first row 58.3 cu.ft  
behind second row 15.6 cu.ft

## OBSTACLE CLEARANCE

Off-road 11.5 inches  
Standard 8.5 inches

## TURNING CIRCLE

Curb-to-curb 37.1 ft  
Wall-to-wall 39.4 ft  
Turns lock-to-lock 2.7

## WADING DEPTH\*

Maximum wading depth  
Air suspension 35.4 inches

\*Driving in floodwaters or moving water should be avoided. Driving through water can be extremely dangerous. The Wade Sensing feature only detects depth of water the vehicle is in at the present time and not of water ahead or around the vehicle. Therefore, Wade Sensing cannot predict whether it is safe to proceed and cannot detect steep drops in grade around the vehicle. The driver is responsible for determining the conditions of the route being driven.

Fitting of side tubes or side steps may affect the off-road capability of the vehicle. Challenging off-road driving requires full training and experience.

Some Defender vehicles shown may be European models with optional equipment. Vehicle trims and options shown may not be available in the United States. See your local Land Rover Retailer for details.

Width 79.1 inches mirrors folded  
Width 82.9 inches mirrors out



Front wheel track  
Air suspension 67.2 inches



Rear wheel track  
67 inches

Length behind  
second row 18.1 inches



Cargo space  
width  
46.8 inches

Length behind  
first row 51.7 inches

Overall length 180.4 inches



	A	B	C
Ride Height			
Off-road	38.0°	31.0°	40.0°
Standard	30.1°	24.2°	37.6°





# DEFENDER 110 DIMENSIONS AND CAPABILITY

## RIDE HEIGHT

With roof antenna 77.4 inches

## HEADROOM

Maximum front/rear headroom 40.6 inches / 40.4 inches

## LEGROOM

Maximum front legroom 39.1 inches

Maximum rear legroom second row (5 seat / 5 + 2 seat) 39.1 / 38.4 inches

## CARGO SPACE CAPACITY

Height 35.6 inches, Width (5 seat / 5 + 2 seat) 47.7 / 46.8 inches

Cargo space width between arches 45.7 inches

Maximum cargo space volume behind first row (5 seat / 5 + 2 seat)

78.8 / 69.0 cu.ft, behind second row (5 seat / 5 + 2 seat)

34.0 / 34.6 cu.ft, behind third row 10.7 cu.ft

## OBSTACLE CLEARANCE

Off-road 11.5 inches

Standard 8.6 inches

## TURNING CIRCLE

Curb-to-curb 42.1 ft

Wall-to-wall 43 ft

Turns lock-to-lock 2.7

## WADING DEPTH\*

Maximum wading depth 35.4 inches

\*Driving in floodwaters or moving water should be avoided. Driving through water can be extremely dangerous. The Wade Sensing feature only detects depth of water the vehicle is in at the present time and not of water ahead or around the vehicle. Therefore, Wade Sensing cannot predict whether it is safe to proceed and cannot detect steep drops in grade around the vehicle. The driver is responsible for determining the conditions of the route being driven

Fitting of side tubes or side steps may affect the off-road capability of the vehicle. Challenging off-road driving requires full training and experience.

Some Defender vehicles shown may be European models with optional equipment. Vehicle trims and options shown may not be available in the United States. See your local Land Rover Retailer for details.

Width 79.1 inches mirrors folded  
Width 82.9 inches mirrors out



Front wheel track  
67 inches



Rear wheel track  
66.9 inches

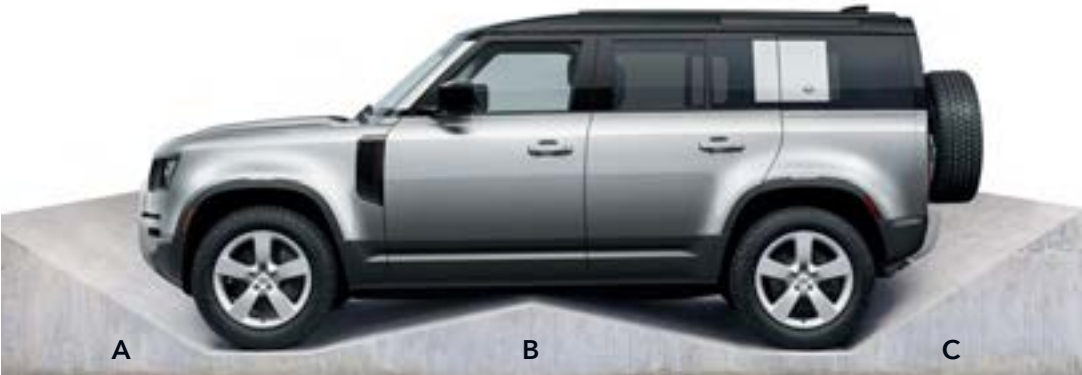
Length behind second row  
(5 seat / 5 + 2 seat) 36.2 / 35.4 inches



Cargo space width  
(5 seat / 5 + 2 seat)  
46.7 / 46.8 inches

Length behind first row (5 seat / 5 + 2 seat) 69.4 / 70.4 inches

Overall length 197.6 inches



	A	B	C
Ride Height			
Off-road	38.0°	28.0°	40.0°
Standard	30.1°	22.0°	37.7°

