

SILVERADO 2021

CHEVROLET



# THE STRONGEST, MOST ADVANCED SILVERADO EVER.

Silverado 1500 Crew Cab Short Bed  
LT Trail Boss 4x4 in Red Hot with  
available 6.2L EcoTec3 V8 engine  
and dealer-installed Tonneau Cover  
from Chevrolet Accessories.

We put over 100 years of truck-building know-how into the next-generation Chevy Silverado. It starts with strong choices: eight models with bold styling and distinct personalities, along with six powerful, advanced engines. We added a hardworking bed and smart, purposeful technology to deliver towing confidence every day. Plus something no one else can say: Silverado is built on the legacy of the most dependable, longest-lasting full-size pickups on the road!

## FIND NEW ROADS™



<sup>1</sup> Dependability based on longevity: 1987–July 2018 full-size pickup registrations.

## MODELS

### WT

Silverado WT lives up to the legendary Chevrolet name stamped on the grille and tailgate.

Its work truck résumé starts with the rock-solid power of a standard 4.3L EcoTec3 V6. Available powertrains include a 2.7L Turbo and a 5.3L EcoTec3 V8 with Active Fuel Management™. It continues with Durabed, featuring increased cargo volume, high-strength steel and 12 standard tie-downs. The hardworking WT interior has durable vinyl or available cloth seats and a rubberized vinyl floor for easy cleanup. A 7-inch diagonal color touch-screen keeps you informed and entertained.



### CUSTOM

Here's where high style and value meet.

Silverado Custom steals the spotlight with body-color bumpers and center grille bar along with deep-tinted glass, signature LED taillamps and 20-inch Bright Silver-painted aluminum wheels. A 4.3L V6 engine is standard. Available engines include a 2.7L Turbo and a 5.3L EcoTec3 V8 with Active Fuel Management that features a dual-outlet exhaust with polished tips. A striking Jet Black cloth interior with matching carpeting welcomes you inside.



## MODELS

### CUSTOM TRAIL BOSS

Show the trails who's boss.

The suspension on Custom Trail Boss has a 2-inch lift right from the factory. There's also the Z71 Off-Road Package, Autotrac® 2-speed transfer case and everything else you need for a day off the beaten path. Plus, you can add the 420-horsepower 6.2L EcoTec3 V8 engine when you need some extra muscle. Goodyear Wrangler DuraTrac® tires, a Black grille, 18-inch high-gloss Black-painted aluminum wheels and Performance Red recovery hooks<sup>1</sup> set this off-road warrior apart from Silverado Custom.



### LT

Iconic looks combine with classic capability.

LT has that essential truck appeal with chrome bumpers, center grille bar and mirror caps complemented by body-color door handles and available 20-inch painted-aluminum wheels. LED headlamps and daytime running lamps add signature enhancements. Capability comes from the high-output 2.7L Turbo or available 5.3L EcoTec3 V8 engine – both paired with an 8-speed automatic transmission. Technology features include an 8-inch diagonal color touch-screen and available SiriusXM® with 360L<sup>2</sup>.



<sup>1</sup> To avoid the risk of injury, never use recovery hooks to tow a vehicle. See the Owner's Manual for more information. <sup>2</sup> Certain features require a SiriusXM subscription and the Chevrolet Connected Access plan. See [siriusxm.com](http://siriusxm.com) and [onstar.com](http://onstar.com) for details and limitations.

## MODELS

### RST

Sometimes it's all right to stop and stare.

RST is street art, with body-color bumpers, center grille bar and door handles matched with high-gloss Black mirror caps. LED lighting includes headlamps, daytime running lamps, taillamps and foglamps. Standards include 18-inch Bright Silver-painted aluminum wheels and the EZ Lift power lock and release tailgate. New this year is the available 6.2L EcoTec3 V8 engine. The interior experience is enhanced with Keyless Open and Start, a remote vehicle starter system and a 40/20/40 split-bench front seat with lockable underseat storage.

### LT TRAIL BOSS

This is the boss of bosses.

LT Trail Boss is one serious off-road machine, with all the features of Custom Trail Boss, including the 2-inch lift right from the factory, plus the 5.3L EcoTec3 V8 engine with Dynamic Fuel Management or the available 6.2L EcoTec3 V8, a dual-outlet exhaust with polished tips and an auxiliary external transmission oil cooler. Because comfort and convenience are important no matter where you roam, a remote vehicle starter system, Keyless Open and Start, and all-weather floor liners are welcome additions.



## MODELS

### LTZ

Everything about this truck says “premium.”

Chrome takes center stage on LTZ, from the grille and bumpers to the mirror caps, door handles and beltline accents. The appeal continues with 18-inch Bright Silver-painted aluminum wheels. A 5.3L EcoTec3 V8 engine with Dynamic Fuel Management, an automatic locking rear differential and Advanced Trailering System are standard. A 6.2L V8 or Duramax® 3.0L Turbo-Diesel engine is available. Interior highlights include perforated leather-appointed front seating, heated driver and front outboard passenger seats and a heated steering wheel.

### HIGH COUNTRY

You know you’ve reached the top of the mountain.

High Country features an exclusive grille with a two-tone bronze and chrome finish. The 20-inch wheels and wheel-to-wheel assist steps make a bold design statement. High-intensity discharge LED headlamps with signature curtain LED daytime running lamps complete the look. Powerful gas and diesel engines are available. Advanced trailering features and an industry-first power-up/-down tailgate enhance the capability, while heated and ventilated perforated leather-appointed front bucket seats elevate the luxury.



Vehicle shown with available Chevrolet Accessories.



Vehicle shown with available 22-inch wheels and Chevrolet Accessories.

## SPECIAL EDITIONS

### **TRAIL BOSS WITH MIDNIGHT EDITION**

Everything good happens after midnight.

New for 2020, the Midnight Edition (late availability) is offered on Custom Trail Boss and LT Trail Boss. The darkness falls with a Black exterior complemented by Black Silverado and trim badging on the tailgate, Black tubular assist steps and Black dual-outlet exhaust tips. LT Trail Boss also adds high-intensity discharge LED headlamps. As if that weren't enough, this edition offers available 20-inch Black-painted aluminum wheels.



## SPECIAL EDITIONS

### RALLY EDITION

Dress it up. Take it out.

With the Rally Edition<sup>1</sup> (late availability), offered on Custom and RST, prepare to be the center of attention. Black highlights are everywhere, including the stripes, tubular assist steps, badging and exhaust tip(s). Custom Rally adds a Black bowtie on the grille and steering wheel as well as 20-inch Black-painted aluminum wheels, while RST Rally brings the heat with 22-inch high-gloss Black-painted aluminum wheels.



<sup>1</sup> Available with Summit White, Silver Ice Metallic, Red Hot and Black exterior colors.



## STRONG FROM THE START.

Silverado uses the right material in the right place to do the right job. That means high-strength steel in the frame, bed and safety cage and strong, lightweight aluminum in the doors, hood and tailgate, with everything optimized for durability, safety, mass and function.

The **frame is 88 pounds lighter** than its predecessor, but remarkably has 10% greater torsional rigidity. As much as 80% of the frame is made of high-strength steel.

Silverado has a longer wheelbase, a wider and taller stance, and more cargo volume, yet is **up to 450 pounds lighter** than the previous generation.

To help achieve a **.38 drag coefficient** and a 7.5% improvement in aerodynamics, Chevrolet engineers spent over 500 hours in the wind tunnel, testing airflow around the vehicle. All this testing paid off: Silverado is the most aerodynamic full-size pickup in Chevrolet history.



The **independent short/long arm front suspension** provides excellent wheel alignment, ride comfort and tunability with reduced weight. The live axle rear suspension includes 2-stage, semi-elliptic multileaf springs to strike a balance between payload management and ride quality. LT with the available 5.3L EcoTec3 V8 engine includes composite second-stage leaf springs that are durable and lightweight.

Silverado 4x4 models offer **two Autotrac transfer cases**. The 2-speed transfer case (standard on Trail Boss models and High Country; included with the Z71 Off-Road Package on other models) features Auto, 2 High, 4 High and 4 Low settings. The single-speed transfer case (standard on Work Truck, Custom, LT, RST and LTZ) offers Auto, 2 High and 4 High. It also includes a Drive Mode Selector with Terrain mode, designed to optimize low-speed off-road driving.

The available **Drive Mode Selector** allows you to choose different drive modes (based on the vehicle's equipment) that alter the transmission shifts, throttle and traction systems to better handle varying road conditions. Normal is for everyday driving; Sport increases responsiveness; Tow/Haul aids in trailering; Snow is helpful in slippery conditions; Terrain optimizes low-speed driving over rough terrain;

and Off-Road helps Silverado take on the rough stuff.

An **electro-hydraulic boost** or "e-boost" system produces on-demand power for smooth, reliable, consistent braking whether the truck is loaded, unloaded or hauling a heavy trailer. And the Duralife® coating helps increase rotor life.





## DURABED

### BEST BED IN THE BUSINESS.

Durabed is **the most functional bed of any pickup**, with a roll-formed high-strength steel floor that's stronger, lighter and more durable than a traditional stamped steel floor.

It's longer, deeper and wider than the previous generation, with **12 standard tie-downs**, nine more available removable tie-downs from Chevrolet Accessories, and a larger CornerStep rear bumper.

Durabed offers 89.1 cubic feet<sup>1</sup> of cargo volume on Long Bed, 71.7 cubic feet<sup>1</sup> on Standard Bed and 62.9 cubic feet<sup>1</sup> on Short Bed.

The industry-first, Chevrolet-exclusive **power-up/-down tailgate** lets you easily raise or lower the tailgate using the key fob, a button in the cabin or a touchpad on the gate itself. Standard on High Country and available on LTZ.

An available **bed-mounted 120-volt outlet** lets you power up a laptop, charge the batteries for cordless tools and more. There's also a second available 120-volt outlet on the instrument panel.

<sup>1</sup> Cargo and load capacity limited by weight and distribution.

Silverado 1500 Crew Cab Short Bed  
High Country 4x4 in Iridescent Pearl  
Tricoat (extra-cost color) with  
available features.

## TRAILERING

# CONFIDENCE IS KEY.

- What separates Silverado from the competition is the peace of mind you get from integrated towing features that deliver confidence and make hauling big loads easy.
- The available Advanced Trailering Package includes Hitch Guidance with Hitch View<sup>1</sup>, hitch area lighting, industry-first electric parking brake hookup assist, an integrated trailer brake controller, trailer theft alert, an in-vehicle Advanced Trailering System with myChevrolet Mobile App<sup>2</sup> and more.
- A dynamic guiding line is integrated onto the image when you select Hitch Guidance<sup>1</sup> on the Rear Vision Camera<sup>1</sup> screen.
- Available Hitch View<sup>1</sup> allows you to zoom in on the hitch for a top-down view, making it easier to hook up your trailer on your own.



<sup>1</sup> Safety or driver assistance features are no substitute for the driver's responsibility to operate the vehicle in a safe manner. The driver should remain attentive to traffic, surroundings and road conditions at all times. Visibility, weather and road conditions may affect feature performance. Read the vehicle Owner's Manual for important feature limitations and information. <sup>2</sup> Device data connection required. Available on select Apple and Android devices. Some features require active service plan and working electrical system. Service availability, features and functionality vary by vehicle. Terms and limitations apply.



## Select Trailer Type

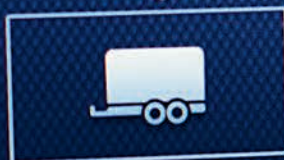


What type of trailer is this?

Boat



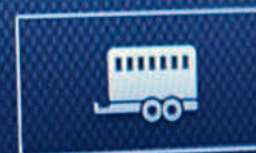
Cargo



Horse



Livestock



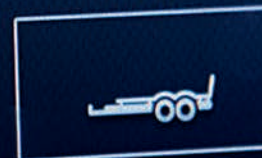
Travel



Utility



Flat



1

2

3

### TECHNOLOGY

## TOWING MADE EASY.

- The available Advanced Trailering System has an in-vehicle app<sup>1</sup> that offers customized trailer profiles. Other features include predeparture checklists, trailer lighting diagnostics and trailer tire pressure/temperature monitoring<sup>2</sup>. You also have the ability to create and sync trailer profiles with the myChevrolet Mobile App<sup>3</sup>.
- Segment firsts include available trailer theft alert, electric parking brake hookup assist and brake gain memory on the integrated trailer brake controller.
- Proven trailering technology includes standard features such as StabiliTrak<sup>®</sup> with Trailer Sway Control and Hill Start Assist, Tow/Haul mode and Auto Grade Braking.

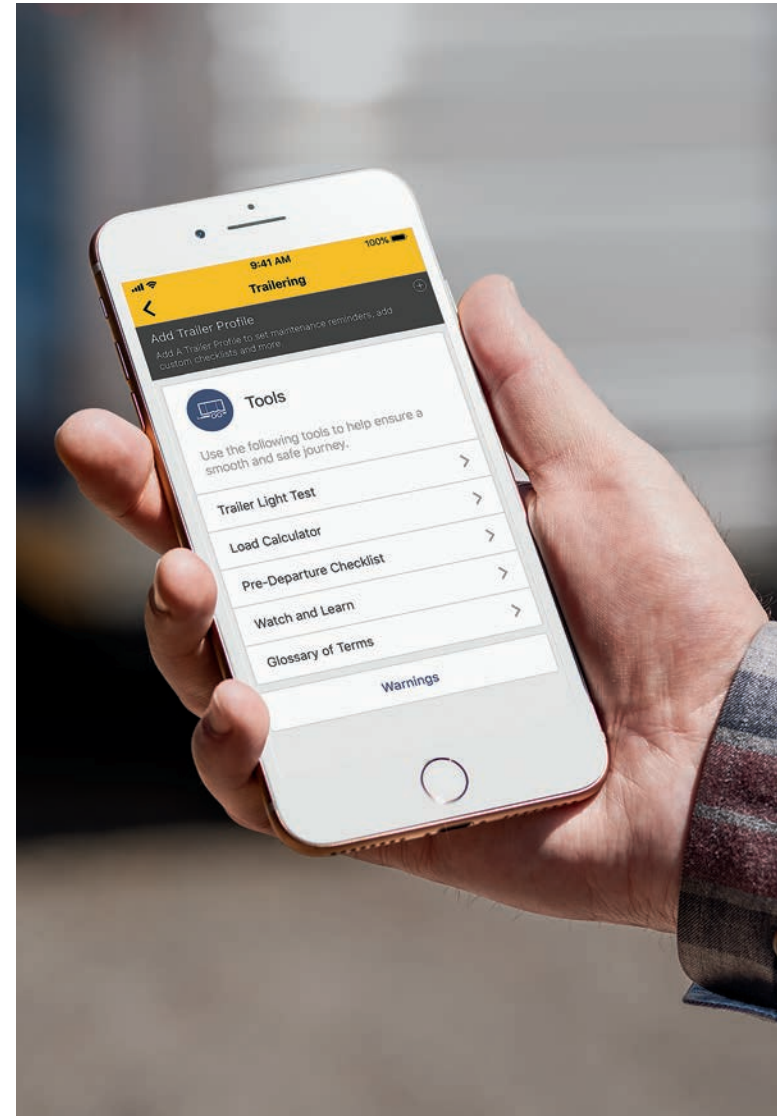
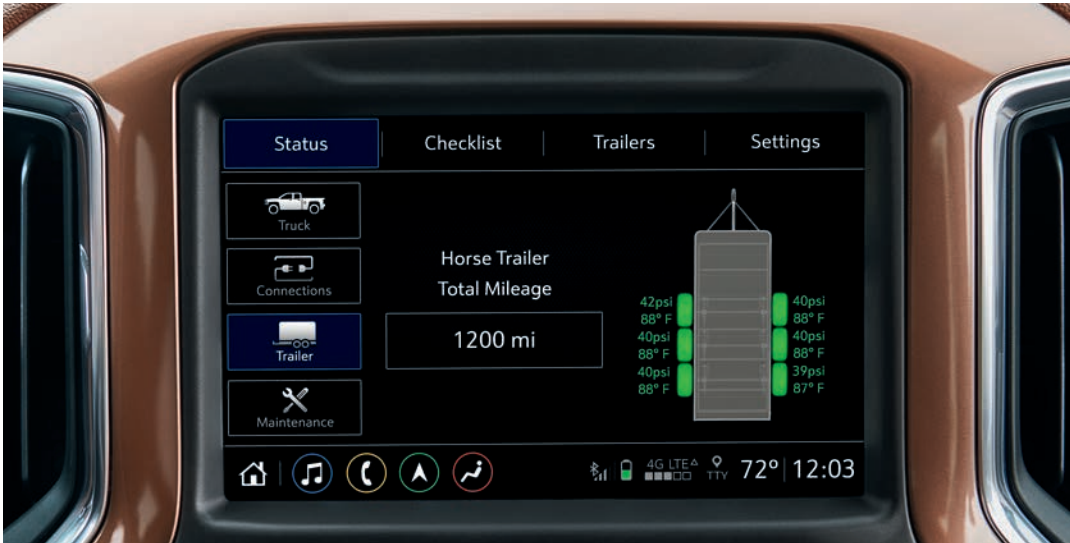
Next

<sup>1</sup> App functionality and features vary with vehicle equipment and trim level. Data connection may be required. Some features require active service plan and working electrical system. Terms and limitations apply. <sup>2</sup> Does not monitor spare tire. <sup>3</sup> Device data connection required. Available on select Apple and Android devices. Some features require active service plan and working electrical system. Service availability, features and functionality vary by vehicle. Terms and limitations apply.

Available Trailer Tire Pressure Monitoring System also checks tire temperature!

myChevrolet Mobile App with Trailing<sup>2</sup> syncs with the Advanced Trailing System.

An integrated trailer brake controller is available.



<sup>1</sup> Does not monitor spare tire. <sup>2</sup> Device data connection required. Available on select Apple and Android devices. Some features require active service plan and working electrical system. Service availability, features and functionality vary by vehicle. Terms and limitations apply.

## CAMERA TECHNOLOGIES

### SEEING IS BELIEVING.

The 2020 Silverado offers a **Technology Package** featuring cameras that provide up to 15 views<sup>1</sup> to help make it easier to hitch a trailer and provide confidence while towing.

Views enabled by these cameras are easily accessed by selecting the available Camera App on the touch-screen display. Conveniently, select views can be launched through the available **Advanced Trailering System**.

<sup>1</sup>Read the vehicle Owner's Manual for important feature limitations and information. Some camera views require available accessory cameras and installation. Not compatible with all trailers. See your dealer for details.



**Transparent Trailer View<sup>1</sup>** Allows the driver to virtually “see through” a conventional hitched box or camping trailer.



**Hitch View<sup>1</sup>** Provides a close-up view of the receiver hitch to help with alignment when connecting to a trailer.



**Bed View<sup>1</sup>** Allows you to see inside the cargo bed to help with fifth-wheel or gooseneck hitching and to briefly check on cargo.

Safety or driver assistance features are no substitute for the driver's responsibility to operate the vehicle in a safe manner. The driver should remain attentive to traffic, surroundings and road conditions at all times.

Visibility, weather and road conditions may affect feature performance. Read the vehicle Owner's Manual for more important feature limitations and information. Some camera views require available

accessory cameras and installation. Not compatible with all trailers. See your dealer for details.



**Front Camera View** Displays front view with available guidelines to assist with parking and tight maneuvers.



**Rear Camera View** Displays rear view to assist with parking and tight maneuvers.



**Surround View** Gives a top-down bird's-eye view of the truck's surroundings.



**Front Top-Down View** A top-down view of the hood, bumper and front tires for tight maneuvers in parking lots or along curbs.



**Rear Top-Down View** Shows the clearance between the truck bed and nearby objects.



**Bowl View** Provides a rear-facing 3-D surround view, useful for low-speed backing maneuvers.



Safety or driver assistance features are no substitute for the driver's responsibility to operate the vehicle in a safe manner. The driver should remain attentive to traffic, surroundings and road conditions at all times.

Visibility, weather and road conditions may affect feature performance. Read the vehicle Owner's Manual for more important feature limitations and information. Some camera views require available

accessory cameras and installation. Not compatible with all trailers. See your dealer for details.



**Front Side View** Shows the position of the front tires when parking and during tight maneuvers.



**Rear Side View** Provides a line of sight down each side of the truck and trailer.



**Rear Trailer View** Uses an available accessory camera that can be installed to show vehicles or objects behind the trailer.



**Inside Trailer View** Allows the driver to monitor trailer contents or cargo using an available accessory camera that can be installed in the trailer.



**Pic-In-Pic Side View** Combines two views – the Rear Side View and the Rear Trailer View. Requires available accessory camera.



**Rear Camera Mirror** An available dual-function camera-based rearview mirror that provides a wider, less-obstructed field of view than a traditional rearview mirror.

Silverado 1500 Crew Cab Short Bed  
High Country 4x4 in Havana Brown  
Metallic with available features.



## POWERTRAIN

# THE SOURCE OF ALL POWER.



Silverado offers **six different engines** designed for trucks that share two things in common: Chevy DNA and the promise of bringing you the best driving truck we have ever built.

Standard on LT and RST, the **2.7L Turbo engine** generates 310 horsepower and 348 lb.-ft. of torque with no turbo lag and off-the-line acceleration that takes you from 0 to 60 in 6.8 seconds! Efficiency wasn't an afterthought – Active Fuel Management helps this engine offer 23 MPG on the highway.<sup>2</sup>

You get the best of both worlds with the available **Duramax 3.0L Turbo-Diesel I-6 engine**. First, it's an efficient powerplant, offering 33 MPG on the highway.<sup>3</sup> It's also plenty strong, with 277 horsepower, 460 lb.-ft. of torque and the ability to tow up to 9,300 lbs.<sup>4,5</sup>

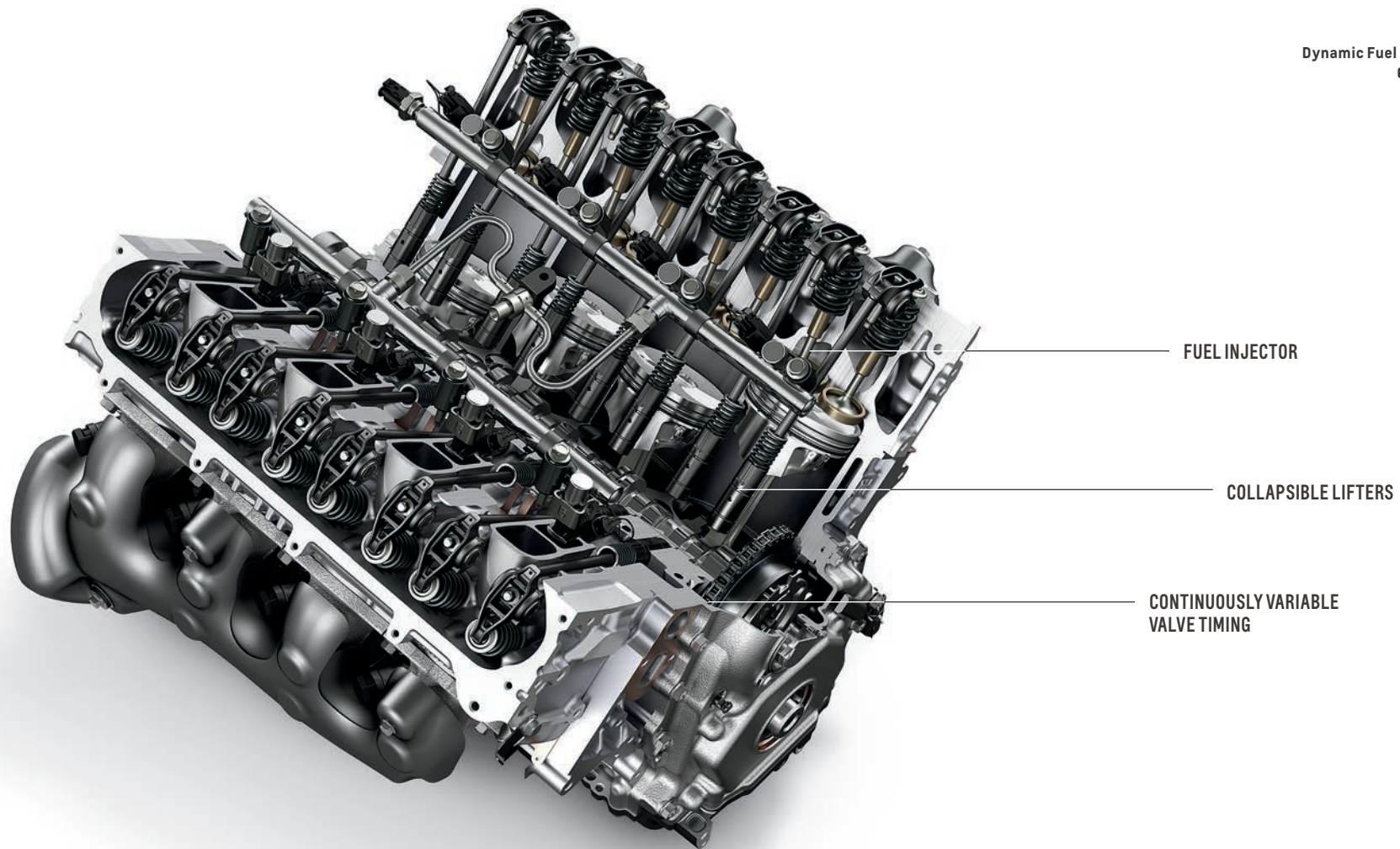
This engine has a diesel exhaust brake system that utilizes the turbocharger to create back pressure to help slow your Silverado on downhill grades.



2.7L TURBO (L3B)	3.0L TURBO-DIESEL I-6 (LM2)	4.3L ECOTEC3 V6 (LV3)	5.3L ECOTEC3 V8 (L82)	5.3L ECOTEC3 V8 (L84)	6.2L ECOTEC3 V8 (L87)
<b>ACTIVE FUEL MANAGEMENT</b>	<b>DIESEL EXHAUST BRAKE SYSTEM</b>	<b>ACTIVE FUEL MANAGEMENT</b>	<b>ACTIVE FUEL MANAGEMENT</b>	<b>DYNAMIC FUEL MANAGEMENT</b>	<b>DYNAMIC FUEL MANAGEMENT</b>
<b>310 HP @ 5600 RPM</b>	<b>277 HP @ 3750 RPM</b>	<b>285 HP @ 5300 RPM</b>	<b>355 HP @ 5600 RPM</b>	<b>355 HP @ 5600 RPM</b>	<b>420 HP @ 5600 RPM</b>
<b>348 LB.-FT. TORQUE @ 1500 RPM</b>	<b>460 LB.-FT. TORQUE @ 1500 RPM</b>	<b>305 LB.-FT. TORQUE @ 3900 RPM</b>	<b>383 LB.-FT. TORQUE @ 4100 RPM</b>	<b>383 LB.-FT. TORQUE @ 4100 RPM</b>	<b>460 LB.-FT. TORQUE @ 4100 RPM</b>
<b>6,800 LBS. MAX TOWING CAPABILITY<sup>4,6</sup></b>	<b>9,300 LBS. MAX TOWING CAPABILITY<sup>4,5</sup></b>	<b>7,900 LBS. MAX TOWING CAPABILITY<sup>4,7</sup></b>	<b>11,000 LBS. MAX TOWING CAPABILITY<sup>4,8</sup></b>	<b>11,600 LBS. MAX TOWING CAPABILITY<sup>4,9</sup></b>	<b>13,400 LBS. MAX TOWING CAPABILITY<sup>4,10</sup></b>
<b>20 MPG CITY/ 23 HIGHWAY<sup>2</sup></b>	<b>23 MPG CITY/ 33 HIGHWAY<sup>3</sup></b>	<b>16 MPG CITY/ 21 HIGHWAY<sup>11</sup></b>	<b>15 MPG CITY/ 21 HIGHWAY<sup>11</sup></b>	<b>17 MPG CITY/ 24 HIGHWAY<sup>12</sup></b>	<b>16 MPG CITY/ 20 HIGHWAY<sup>13</sup></b>

<sup>1</sup> Based on initial vehicle movement. <sup>2</sup> EPA estimated 2WD. EPA-estimated 19 MPG city/22 highway (WT 2WD; 4x4). <sup>3</sup> EPA estimated 2WD. EPA-estimated 23 MPG city/29 highway (4x4). <sup>4</sup> Before you buy a vehicle or use it for trailering, carefully review the Trailering section of the Owner's Manual. The weight of passengers, cargo and options or accessories may reduce the amount you can tow. <sup>5</sup> Requires Silverado 1500 Double Cab Standard Bed 4x4 or Crew Cab Short Bed 4x4. <sup>6</sup> Requires Silverado 1500 Double Cab Standard Bed 2WD, Crew Cab Short Bed 2WD or Crew Cab Standard Bed 2WD. <sup>7</sup> Requires Silverado 1500 Regular Cab Long Bed 2WD. <sup>8</sup> Requires Silverado 1500 Crew Cab Short Bed Custom 4x4 with available Max Trailering Package. <sup>9</sup> Requires Silverado 1500 Double Cab Standard Bed 2WD with available Max Trailering Package. <sup>10</sup> Requires Silverado 1500 Double Cab Standard Bed RST 4x4 with available Max Trailering Package and 20-inch wheels. <sup>11</sup> EPA estimated 2WD. EPA-estimated 15 MPG city/20 highway (4x4), 14 MPG city/18 highway (Trail Boss 4x4). <sup>12</sup> EPA estimated 2WD XFE. EPA-estimated 17 MPG city/23 highway (2WD), 16 MPG city/22 highway (4x4), 16 MPG city/21 highway (Trail Boss 4x4). <sup>13</sup> EPA estimated 4x4. EPA-estimated 15 MPG city/19 highway (LT Trail Boss 4x4), 14 MPG city/18 highway (Custom Trail Boss 4x4).

Dynamic Fuel Management System.  
6.2L V8 engine shown.



**Dynamic Fuel Management** is included on the 5.3L EcoTec3 V8 engine with 8- and 10-speed transmissions as well as the available 6.2L EcoTec3 V8. A sophisticated control system continuously monitors every movement of the accelerator pedal and calculates exactly how much torque is needed to handle the current driving condition,

from highway cruising to city traffic to hauling a heavy load. Nearly instantaneously, the engine control system will activate or deactivate cylinders in an industry-first 17 different patterns to maximize fuel economy<sup>1</sup> and create the power needed. And it all happens with seamless precision, so you'll never even notice.

The 2.7L Turbo, the 4.3L EcoTec3 V6 and the 5.3L EcoTec3 V8 engine with 6-speed transmission offer **Active Fuel Management**. Sensing load and demand, this feature helps improve efficiency by deactivating cylinders when power demands are light and reactivating cylinders when more power is required.

A highly efficient **10-speed automatic transmission** provides impressive refinement and performance with enhanced acceleration and torque delivery while towing. Included with the available 6.2L EcoTec3 V8, Duramax 3.0L Turbo-Diesel, and 5.3L EcoTec3 V8 with Dynamic Fuel Management on LT Trail Boss and High Country 4x4 models.

<sup>1</sup> EPA-estimated MPG city/highway: 17/23 (2WD), 16/22 (4x4), 16/21 (Trail Boss with 5.3L V8 engine), 16/20 (4x4 with 6.2L V8 engine), 15/19 (LT Trail Boss 4x4 with 6.2L V8 engine), 14/18 (Custom Trail Boss 4x4 with 6.2L V8 engine).

At left: Silverado 1500 Crew Cab Short Bed LT 4x4 in Cajun Red Tintcoat (extra-cost color) with available features and Z71 Off-Road Package. At right: Silverado 1500 Crew Cab Short Bed RST 4x4 in Black with available features and Z71 Off-Road Package.



## Z71 OFF-ROAD PACKAGE

The Z71 Off-Road Package is available on almost every Silverado (standard on Trail Boss models; not available on Custom) and includes the **Autotrac 2-speed transfer case**, twin-tube Rancho® shocks (Rancho monotube shocks on Trail Boss), a metal underbody shield, a heavy-duty air filter, an industry-first air filter monitor,

all-terrain tires, and more. LT, RST and LTZ add a dual-outlet exhaust with polished tips.

An **automatic locking rear differential** reacts in milliseconds to low-traction situations for improved forward motion. It provides equal power to both rear wheels, giving you the traction to keep moving.

Hill Descent Control uses antilock braking to automatically help provide a smooth descent on steep terrain.

To keep your truck protected on the trails, the available **Z71 Off-Road and Protection Package** includes wheelhouse liners, a Chevytac spray-on bedliner, and all-weather front and rear floor liners with the Z71 emblem.

The **Trailer Package** (standard on both Trail Boss models, LTZ and High Country; required on all other models when you choose the available Z71 Off-Road Package) includes a trailer hitch with 7-pin and 4-pin connectors.

Silverado 1500 Crew Cab Short Bed  
Custom Trail Boss 4x4 in Summit White  
with available features.



## TRAIL BOSS

The suspensions on Custom Trail Boss and LT Trail Boss have been given a **2-inch lift right from the factory** to maximize approach, breakover and departure angles. That's in addition to the legendary Z71 Off-Road Package,

18-inch Goodyear Wrangler DuraTrac® tires, Autotrac 2-speed transfer case, automatic locking rear differential and Trailering Package, giving you what you need to leave roads behind.

**Custom Trail Boss** features the 285-horsepower 4.3L EcoTec3 V6 engine, or you can opt for one of two V8 engines – the available 5.3L with 355 horsepower or the 6.2L with 420 horsepower.

Black Chevrolet bowtie emblems, a Black grille, 18-inch high-gloss Black-painted aluminum wheels and Performance Red recovery hooks<sup>1</sup> provide a distinctive look.

<sup>1</sup> To avoid the risk of injury, never use recovery hooks to tow a vehicle. See the Owner's Manual for more information.

Silverado 1500 Crew Cab Short Bed  
LT Trail Boss 4x4 in Red Hot.



LT Trail Boss is highlighted by the 5.3L EcoTec3 V8 engine with Dynamic Fuel Management or available 6.2L EcoTec3 V8 – both with a 10-speed automatic transmission – plus a dual-outlet exhaust with polished tips

and an auxiliary external transmission oil cooler. LED headlamps, taillamps, foglamps and cargo area lighting are standard, as is an EZ Lift power lock and release tailgate. In addition,

there's a leather-wrapped steering wheel, remote vehicle starter system, Keyless Open and Start and all-weather floor liners with Z71 emblems.

Silverado 1500 Crew Cab  
Short Bed High Country 4x4  
in Havana Brown Metallic with  
available features.



## HIGH COUNTRY


# REACH HIGHER.

- Exclusive grille and center grille bar with two-tone bronze and chrome finish, as well as chrome wheel-to-wheel assist steps.
- High-intensity discharge LED headlamps and 20-inch machined-face aluminum wheels.
- Industry-first power-up/-down tailgate.
- 5.3L EcoTec3 V8 or available 6.2L EcoTec3 V8 or Duramax 3.0L Turbo-Diesel I-6 engine.
- Advanced Trailering System.
- Interior in Jet Black or Jet Black with Umber accents includes heated and ventilated perforated leather-appointed front bucket seats and heated rear outboard seats.
- Bose premium 7-speaker sound system and Chevrolet Infotainment 3 Premium with Navigation system<sup>1</sup>
- Advanced safety features include Rear Cross Traffic Alert<sup>2</sup>, Lane Change Alert with Side Blind Zone Alert<sup>2</sup>, and Front and Rear Park Assist<sup>2</sup>. Adaptive Cruise Control – Camera<sup>2</sup> is available.

<sup>1</sup> Chevrolet Infotainment System functionality varies by model. Full functionality requires compatible Bluetooth and smartphone, and USB connectivity for some devices. Map coverage available in the United States, Puerto Rico and Canada.

<sup>2</sup> Read the vehicle Owner's Manual for important feature limitations and information.





High Country interior in Jet Black with  
Umber accents and available features.

## INTERIOR DESIGN

# ROOM TO ROAM.

- Large exterior proportions allow for an expanded interior cabin, which contributes to ample head room and leg room.
- Front seating has been raised by 1.5 inches compared to the previous generation for a more commanding view of the road.
- Rear-seat heating and cooling vents are standard in Double Cab and Crew Cab models.
- Under certain conditions, the Rear Seat Reminder<sup>1</sup> feature alerts you to double-check for valuables left behind.
- An available Bose premium 7-speaker sound system includes a Richbass subwoofer.
- Acoustic panels located in fixed seatbacks help dampen noise and reduce squeaks, and dissipative carpet technology absorbs sound to create a quiet cabin.

<sup>1</sup> Does not detect people or items. Always check rear seat before exiting. Read the vehicle Owner's Manual for important feature limitations and information.



High Country interior in Jet Black with Umber accents and available features.

## INTERIOR DESIGN

# INNER STRENGTH.

- The intuitive interior, designed with durable materials, includes large buttons and knobs that can be adjusted with gloved hands.
- Large upper and lower glove boxes, three front cup holders and an instrument panel storage pad are standard.
- An available lighted center console compartment doubles as a filing cabinet.
- Available rear outboard seatback storage compartments keep items like small laptops hidden from view.
- An available storage bin below the rear seat can hold both long gear like an ice scraper and tall items like 2-liter bottles of soda.



## TECHNOLOGY

### TECH THAT CONNECTS.

- Available segment-first 15-inch diagonal multi-color Head-Up Display projects critical data onto the windshield to help you keep your eyes on the road.
- The Chevrolet Infotainment 3 system<sup>1</sup> is intuitive and easy to use, with a simplified 7-inch or 8-inch diagonal color touch-screen display, faster response and enhanced voice recognition.
- Enjoy an unparalleled variety of premium content, innovative features that make discovery easier than ever, and a personalized experience for every drive with available SiriusXM<sup>®</sup> with 360L<sup>2</sup> – SiriusXM's most advanced listening experience.
- HD Surround Vision<sup>3</sup> is available and provides you with an overhead bird's-eye view of the area around the vehicle on the infotainment screen. It helps you park and avoid nearby objects at low speeds.



<sup>1</sup> Chevrolet Infotainment System functionality varies by model. Full functionality requires compatible Bluetooth and smartphone, and USB connectivity for some devices. <sup>2</sup> Certain features require a SiriusXM subscription and the Chevrolet Connected Access plan. See [siriusxm.com](http://siriusxm.com) and [onstar.com](http://onstar.com) for details and limitations. <sup>3</sup> Read the vehicle Owner's Manual for important feature limitations and information.

Up to six available USB ports!

Apple CarPlay<sup>®2</sup> integration for your iPhone<sup>®</sup> (shown) and Android Auto<sup>™3</sup> compatibility.

Available Chevrolet Infotainment 3 Premium with Navigation system<sup>4</sup>

Teen Driver technology.



<sup>1</sup> Not compatible with all devices. <sup>2</sup> Vehicle user interface is a product of Apple and its terms and privacy statements apply. Requires compatible iPhone and data plan rates apply. <sup>3</sup> Vehicle user interface is a product of Google and its terms and privacy statements apply. Requires the Android Auto app on Google Play and an Android compatible smartphone running Android 5.0 Lollipop or higher. Data plan rates apply. <sup>4</sup> Chevrolet Infotainment System functionality varies by model. Full functionality requires compatible Bluetooth and smartphone, and USB connectivity for some devices. Map coverage available in the United States, Puerto Rico and Canada.

Apple CarPlay and iPhone are trademarks of Apple Inc., registered in the U.S. and other countries. Android Auto and Google Maps are trademarks of Google LLC.

## SAFETY AND DRIVER ASSISTANCE

# A COMMITMENT TO SAFETY IS ONE OF OUR GREATEST STRENGTHS.



**Automatic Emergency Braking.** At speeds below 50 mph, if an imminent front-end collision is detected with a vehicle you are following, the feature can alert you and can automatically apply hard emergency braking or enhance driver hard braking. Available on LTZ and High Country.



**Following Distance Indicator and Forward Collision Alert.** These features monitor how close your vehicle is to the detected vehicle in front of you and can alert you to a potential crash. Available on LTZ and High Country.



**Lane Keep Assist with Lane Departure Warning.** At speeds above 37 mph, this feature monitors road lines and can gently turn the steering wheel to help keep the vehicle in its lane or provide an alert if a lane marker is unintentionally crossed. Available on LTZ and High Country.



**Front Pedestrian Braking.** At speeds below 50 mph, if an imminent collision with a pedestrian directly ahead is detected, the feature can alert you and can even apply last-second emergency braking. Performance is limited at night. Available on LTZ and High Country.



**Rear Cross Traffic Alert.** This feature can alert you to detected vehicles crossing behind your Silverado when backing up. Standard on High Country; available on WT, LT, RST, LT Trail Boss and LTZ.



**Rear Vision Camera.** When traveling in Reverse at low speeds, this standard feature helps provide a view of the area immediately behind your Silverado. An HD version is included on LTZ and High Country.



**Front and Rear Park Assist.** At low speeds, this feature can provide distance alerts to nearby detected objects to help you park. Standard on High Country; available on WT, LT, RST, LT Trail Boss and LTZ.



**IntelliBeam® headlamps.** When oncoming headlamps are sensed or when taillamps are detected, this feature intuitively adjusts between low and high beams. Available on LTZ and High Country.



**Lane Change Alert with Side Blind Zone Alert.** This feature can provide side mirror alerts when it detects fast-approaching vehicles in adjacent lanes as well as moving vehicles in the side mirror blind zones. Standard on High Country; available on WT, LT, RST, LT Trail Boss and LTZ.



**Safety Alert Seat.** This feature gives you the option of getting directional vibration pulses from the driver seat instead of beeps to indicate the direction of potential threats. Available on LTZ and High Country.



**Adaptive Cruise Control – Camera.** Using camera technology, this feature can automatically adapt cruise control speed to maintain a following gap to vehicles detected ahead. Available on LTZ and High Country.

**Safety starts with you.** Safety or driver assistance features are no substitute for the driver's responsibility to operate the vehicle in a safe manner. The driver should remain attentive to traffic, surroundings and road conditions at all times. Visibility, weather and road conditions may affect feature performance. Read the vehicle Owner's Manual for more important feature limitations and information.





## TRUCK LEGENDS



When you've been building pickups for over 100 years, one thing you learn is there's a story behind every truck. And we want to hear yours. **Chevy Truck Legends** honors our dependable, long-lasting trucks and the people who

keep them going strong. If you have purchased or leased more than one eligible new Chevy truck in your lifetime or have driven one over 100,000 miles, you're a legend. Go to [chevytrucklegends.com](https://chevytrucklegends.com) to find

your eligible truck and discover the benefits that come with membership. Explore the galleries and read about the relationship owners have with their Chevy trucks.

## ACCESSORIES







**22" Gloss Black Aluminum Wheels with Chrome Inserts available from Chevrolet Accessories**



**22" Midnight Silver Aluminum Wheels with Chrome Inserts available from Chevrolet Accessories**



**22" Bright Chrome Aluminum Wheels available from Chevrolet Accessories**



**22" Low-Gloss Black Wheels with Machined Accents available from Chevrolet Accessories**



**Silverado 1500 Crew Cab Short Bed RST in Cajun Red Tintcoat (extra-cost color) with available features and dealer-installed 22-inch Low-Gloss Black Wheels with Machined Accents, Sport Bar, 4-inch Off-Road Assist Steps, Black Silverado Badges and Black Door Handles from Chevrolet Accessories.**

## EXTERIOR COLORS



Summit White<sup>1</sup> (GAZ)



Iridescent Pearl Tricoat<sup>2,3</sup> (G1W)



Shadow Gray Metallic<sup>1</sup> (GJI)



Havana Brown Metallic<sup>4</sup> (G2X)



Northsky Blue Metallic (GA0)



Black (GBA)

<sup>1</sup> Not available on High Country. <sup>2</sup> Extra-cost color. <sup>3</sup> Not available on WT, Custom or Custom Trail Boss. <sup>4</sup> Not available on Regular Cab models.

## EXTERIOR COLORS (CONTINUED)



Silver Ice Metallic<sup>1</sup> (GAN)



Satin Steel Metallic (G9K)



Red Hot<sup>2</sup> (G7C)



Cajun Red Tintcoat<sup>3,4</sup> (GPJ)

### INTERIOR COLOR

EXTERIOR COLOR	CODE	JET BLACK	GIDEON	JET BLACK/ UMBER
Summit White <sup>1</sup>	GAZ	○	○	–
Iridescent Pearl Tricoat <sup>3,5</sup>	G1W	○	○	○
Silver Ice Metallic <sup>1</sup>	GAN	○	○	–
Satin Steel Metallic	G9K	○	○	○
Shadow Gray Metallic <sup>1</sup>	GJI	○	○	–
Havana Brown Metallic <sup>6</sup>	G2X	○	○	○
Red Hot <sup>5</sup>	G7C	○	–	–
Cajun Red Tintcoat <sup>3,4</sup>	GPJ	○	○	–
Northsky Blue Metallic	GAO	○	○	–
Black	GBA	○	○	○

○ AVAILABLE – NOT AVAILABLE

<sup>1</sup> Not available on High Country. <sup>2</sup> Not available on LTZ or High Country. <sup>3</sup> Extra-cost color. <sup>4</sup> Not available on WT. <sup>5</sup> Not available on WT, Custom or Custom Trail Boss. <sup>6</sup> Not available on Regular Cab models.

## MODEL AVAILABILITY

● AVAILABLE – NOT AVAILABLE

TRIM LEVEL	STANDARD ENGINE	AVAILABLE ENGINES	2WD	4x4	REGULAR CAB LONG BED	DOUBLE CAB STANDARD BED	CREW CAB SHORT BED	CREW CAB STANDARD BED
WT	4.3L EcoTec3 V6 (LV3)	2.7L Turbo (L3B), 5.3L EcoTec3 V8 (L82)	●	●	●	●	●	●
CUSTOM	4.3L EcoTec3 V6 (LV3)	2.7L Turbo (L3B), 5.3L EcoTec3 V8 (L82)	●	●	–	●	●	●
CUSTOM TRAIL BOSS	4.3L EcoTec3 V6 (LV3)	5.3L EcoTec3 V8 (L82), 6.2L EcoTec3 V8 (L87)	–	●	–	●	●	●
LT	2.7L Turbo (L3B)	5.3L EcoTec3 V8 (L84), Duramax 3.0L <sup>1</sup> (LM2)	●	●	–	●	●	●
RST	2.7L Turbo (L3B)	5.3L EcoTec3 V8 (L84), 6.2L EcoTec3 V8 (L87), Duramax 3.0L <sup>1</sup> (LM2)	●	●	–	●	●	●
LT TRAIL BOSS	5.3L EcoTec3 V8 (L84)	6.2L EcoTec3 V8 (L87)	–	●	–	–	●	●
L TZ	5.3L EcoTec3 V8 (L84)	6.2L EcoTec3 V8 (L87), Duramax 3.0L <sup>1</sup> (LM2)	●	●	–	●	●	●
HIGH COUNTRY	5.3L EcoTec3 V8 (L84)	6.2L EcoTec3 V8 (L87), Duramax 3.0L <sup>1</sup> (LM2)	●	●	–	–	●	●

## STANDARD EQUIPMENT

Standard on every Silverado:

### MECHANICAL

**Brakes** – 4-wheel antilock disc with Duralife brake rotors and brake lining wear indicator

**Frame** – fully boxed frame with hydroformed front section

**StabiliTrak** – Electronic Stability Control System with Proactive Roll Avoidance and Traction Control; includes Electronic Trailer Sway Control and Hill Start Assist<sup>2</sup>

**Steering** – rack-and-pinion with Electric Power Steering (EPS) assist

### EXTERIOR

**Bumper** – rear CornerSteps

**Cargo area lighting** – integrated with center high-mounted stop lamp

**Fuel filler** – capless fueling

**Lamps** – daytime running lamps, automatic on/off with automatic delay

**Pickup bed** – Durabed

**Tailgate and bed rail** – protection cap

**Tie-downs** – 12 fixed cargo tie-downs, rated at 500 lbs<sup>3</sup> per corner

**Tire** – carrier lock

**Tire** – full-size spare

### INTERIOR

**Air conditioning** – includes rear-seat air vents on Double Cab and Crew Cab

**Air filter monitor**

**Airbags<sup>4</sup>** – dual-stage frontal airbags for driver and front outboard passenger; seat-mounted side-impact airbags for driver and front outboard passenger; head-curtain airbags for front and rear outboard seating positions; includes front outboard Passenger Sensing System for frontal outboard passenger airbag

**Assist handles** – driver and front passenger, A-pillar; rear passenger, B-pillar

**Connectivity** – Bluetooth<sup>®</sup> phone connectivity and wireless audio streaming<sup>5</sup> and Apple CarPlay<sup>®6</sup> and Android Auto<sup>™7</sup> compatibility

**Display** – outside temperature

**Door locks** – manual (Regular Cab); power programmable with lockout protection and manual rear door child security (Double Cab and Crew Cab)

**Instrument cluster** – 6-gauge with speedometer, fuel level, engine temperature, tachometer, voltage and oil pressure

**Media** – USB port<sup>8</sup>

**Power outlet** – 12-volt auxiliary, front

**Rear Seat Reminder<sup>9</sup>**

**Rear Vision Camera<sup>2</sup>**

**Teen Driver technology**

**Tire Pressure Monitoring System** – with Tire Fill Alert (does not apply to spare tire)

**Windows** – manual (Regular Cab); power with driver express-up/-down, all others express-down (Double Cab and Crew Cab)

<sup>1</sup> Not available on Crew Cab Standard Bed 2WD models. <sup>2</sup> Read the vehicle Owner's Manual for important feature limitations and information. <sup>3</sup> These maximum payload ratings are intended for comparison purposes only. Before you buy a vehicle or use it to haul people or cargo, carefully review the Vehicle Loading section of the Owner's Manual and check the carrying capacity of your specific vehicle on the label on the inside of the driver door jamb. <sup>4</sup> A NOTE ON CHILD SAFETY: Always use seat belts and the correct child restraint for your child's age and size, even with airbags. Even in vehicles equipped with the Passenger Sensing System, children are safer when properly secured in a rear seat in the appropriate infant, child or booster seat. Never place a rear-facing infant restraint in the front seat of any vehicle equipped with an active frontal airbag. See your vehicle Owner's Manual and the child safety seat instructions for more safety information. <sup>5</sup> Go to my.chevrolet.com/learnAbout/bluetooth to find out which phones are compatible with the vehicle. Full Bluetooth feature functionality varies by device, model and software version. <sup>6</sup> Vehicle user interface is a product of Apple and its terms and privacy statements apply. Requires compatible iPhone and data plan rates apply. <sup>7</sup> Vehicle user interface is a product of Google and its terms and privacy statements apply. Requires the Android Auto app on Google Play and an Android compatible smartphone running Android 5.0 Lollipop or higher. Data plan rates apply. <sup>8</sup> Not compatible with all devices. <sup>9</sup> Does not detect people or items. Always check rear seat before exiting.

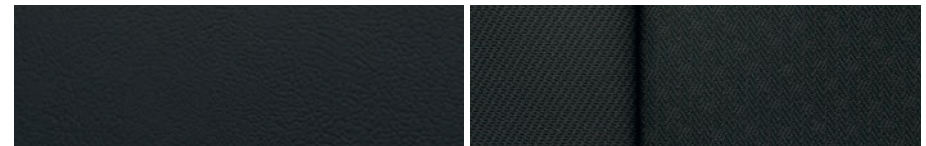
## PAYLOAD AND TRAILER WEIGHT RATINGS

MODEL	ENGINE	MAX PAYLOAD <sup>1</sup>	MAX CONVENTIONAL TRAILER WEIGHT <sup>2</sup>
<b>REGULAR CAB</b>			
Long Bed 2WD	4.3L V6	2,250	7,900
	5.3L V8 (L82) with 6-speed	2,180	10,000
Long Bed 4x4	4.3L V6	2,130	7,700
	5.3L V8 (L82) with 6-speed	2,070	9,800
<b>DOUBLE CAB</b>			
Standard Bed 2WD	2.7L Turbo	2,070	6,800
	4.3L V6	2,040	7,700
	5.3L V8 (L82) with 6-speed	1,970	9,700
	5.3L V8 (L84) with 8-speed	1,980	9,800
	Duramax 3.0L	1,780	7,600
Standard Bed 2WD with Max Trailering Package	5.3L V8 (L84) with 8-speed	2,190	11,600
Standard Bed 4x4	2.7L Turbo	2,050	6,600
	4.3L V6	2,020	7,500
	5.3L V8 (L82) with 6-speed	1,950	9,500
	5.3L V8 (L84) with 8-speed	1,970	9,600
	6.2L V8	1,690	9,300
	Duramax 3.0L	1,770	9,300
Standard Bed 4x4 with Max Trailering Package	5.3L V8 (L84) with 8-speed	2,180	11,400
	6.2L V8	2,090	12,100
Standard Bed RST 4x4 with Max Trailering Package and 20" Wheels	6.2L V8	2,090	13,400
Standard Bed Trail Boss 4x4	4.3L V6	1,770	7,400
	5.3L V8 (L82) with 6-speed	1,670	9,500
	5.3L V8 (L84) with 10-speed	1,680	9,400
	6.2L V8	1,780	9,300
<b>CREW CAB</b>			
Short Bed 2WD	2.7L Turbo	2,060	6,800
	4.3L V6	2,040	7,700
	5.3L V8 (L82) with 6-speed	2,060	9,700
	5.3L V8 (L84) with 8-speed	2,060	9,800
	Duramax 3.0L	1,870	7,600
Short Bed 2WD with Max Trailering Package	5.3L V8 (L84) with 8-speed	2,180	11,500

MODEL	ENGINE	MAX PAYLOAD <sup>1</sup>	MAX CONVENTIONAL TRAILER WEIGHT <sup>2</sup>
<b>CREW CAB (CONTINUED)</b>			
Standard Bed 2WD	2.7L Turbo	1,990	6,800
	4.3L V6	1,960	7,600
	5.3L V8 (L82) with 6-speed	1,990	9,600
	5.3L V8 (L84) with 8-speed	1,990	9,700
Standard Bed 2WD with Max Trailering Package	5.3L V8 (L84) with 8-speed	2,110	11,400
Short Bed 4x4	2.7L Turbo	2,050	6,600
	4.3L V6	2,020	7,500
	5.3L V8 (L82) with 6-speed	2,050	9,500
	5.3L V8 (L84) with 8-speed	2,060	9,600
	5.3L V8 (L84) with 10-speed	2,060	9,300
	6.2L V8	1,670	9,200
	Duramax 3.0L	1,870	9,300
Short Bed 4x4 with Custom Max Trailering Package	5.3L V8 (L82) with 6-speed	2,050	11,000
Short Bed 4x4 with Max Trailering Package	5.3L V8 (L84) with 8-speed	2,170	11,300
	6.2L V8	2,060	12,000
Short Bed Trail Boss 4x4	4.3L V6	1,770	7,400
	5.3L V8 (L82) with 6-speed	2,050	9,500
	5.3L V8 (L84) with 10-speed	1,770	9,400
	6.2L V8	1,780	9,300
Standard Bed 4x4	2.7L Turbo	2,000	6,600
	4.3L V6	1,970	7,400
	5.3L V8 (L82) with 6-speed	2,000	9,500
	5.3L V8 (L84) with 8-speed	2,010	9,500
	5.3L (L84) V8 with 10-speed	2,010	9,200
	6.2L V8	1,600	9,100
	Duramax 3.0L	1,850	9,200
Standard Bed 4x4 with Max Trailering Package	5.3L V8 (L84) with 8-speed	2,130	11,300
	6.2L V8	2,010	11,900
Standard Bed Trail Boss 4x4	4.3L V6	1,710	7,300
	5.3L V8 (L82) with 6-speed	1,710	9,400
	5.3L V8 (L84) with 10-speed	1,720	9,400
	6.2L V8	1,780	9,300

<sup>1</sup> These maximum payload ratings are intended for comparison purposes only. Before you buy a vehicle or use it to haul people or cargo, carefully review the Vehicle Loading section of the Owner's Manual and check the carrying capacity of your specific vehicle on the label on the inside of the driver door jamb. <sup>2</sup> Before you buy a vehicle or use it for trailering, carefully review the Trailering section of the Owner's Manual. The weight of passengers, cargo and options or accessories may reduce the amount you can tow.

## MODELS



Jet Black Vinyl (shown)

Jet Black Cloth



17" Ultra Silver-Painted Steel Wheels (RD6)  
Standard on WT



17" Bright Silver-Painted Aluminum Wheels (Q5U)  
Available on WT

**WT** In addition to standard features, WT includes:

### MECHANICAL

Engine – 4.3L EcoTec3 V6 (LV3)

Exhaust – single-outlet

Rear axle ratio – 3.42

Transmission – 6-speed automatic

### EXTERIOR

Bumpers – semigloss Black, front and rear

Door handles – Black

Glass – solar-absorbing tinted

Grille – Black bar and mesh inserts

Headlamps – halogen reflector headlamps and daytime running lamps

Mirrors – manual-adjustable, Black

Recovery hooks<sup>1</sup> – Black (4x4 models)

Tailgate – manual lift

Taillamps – incandescent

Tires – P255/70R17 all-season

### INTERIOR

Air conditioning – single-zone

Audio – 2-speaker system (Regular Cab); 6-speaker system (Double Cab and Crew Cab)

Driver Information Center – 3.5-inch diagonal monochromatic display

Entertainment – Chevrolet Infotainment 3 system<sup>2</sup> with 7-inch diagonal color touch-screen, AM/FM stereo, Bluetooth<sup>®</sup> audio streaming<sup>3</sup> for two active devices, voice command pass-through to compatible phone, and Apple CarPlay<sup>®4</sup> and Android Auto<sup>™5</sup> compatibility

Floor covering – rubberized vinyl

### INTERIOR (CONTINUED)

Media – USB port<sup>6</sup> on instrument panel

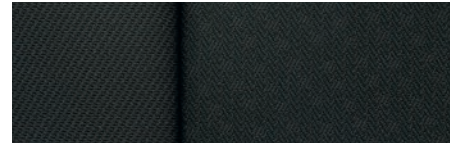
Seat – front 40/20/40 split-bench with 4-way manual driver and front passenger seat adjusters

Seat – rear 60/40 split-folding bench (Double Cab and Crew Cab)

Steering column – manual tilt-wheel with theft-deterrent locking feature

<sup>1</sup> To avoid the risk of injury, never use recovery hooks to tow a vehicle. See the Owner's Manual for more information. <sup>2</sup> Chevrolet Infotainment System functionality varies by model. Full functionality requires compatible Bluetooth and smartphone, and USB connectivity for some devices. <sup>3</sup> Go to [my.chevrolet.com/learnAbout/bluetooth](http://my.chevrolet.com/learnAbout/bluetooth) to find out which phones are compatible with the vehicle. Full Bluetooth feature functionality varies by device, model and software version. <sup>4</sup> Vehicle user interface is a product of Apple and its terms and privacy statements apply. Requires compatible iPhone and data plan rates apply. <sup>5</sup> Vehicle user interface is a product of Google and its terms and privacy statements apply. Requires the Android Auto app on Google Play and an Android compatible smartphone running Android 5.0 Lollipop or higher. Data plan rates apply. <sup>6</sup> Not compatible with all devices.

## MODELS (CONTINUED)



Jet Black Cloth

**CUSTOM** In addition to or replacing WT features, Custom includes:

### EXTERIOR

Bumpers – body-color, front and rear

Glass – deep-tinted behind front doors

Grille – body-color bar with Black mesh inserts

Mirrors – heated, power-adjustable

Taillamps – LED

Tires – P275/60R20 all-season

### INTERIOR

Cruise control – electronic with Set and Resume Speed, steering wheel-mounted controls

Floor covering – color-keyed carpeting

Floor mats – vinyl, front and rear

Recovery hooks<sup>1</sup> – Black

Remote Keyless Entry



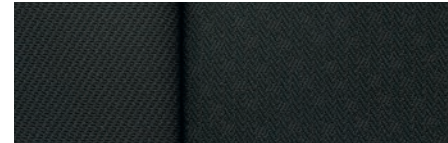
20" Bright Silver-Painted Aluminum Wheels (NZE)  
Standard on Custom



20" Black-Painted Aluminum Wheels (RD5)  
Available on Custom with Rally Edition

<sup>1</sup> To avoid the risk of injury, never use recovery hooks to tow a vehicle. See the Owner's Manual for more information.

## MODELS (CONTINUED)



Jet Black Cloth

**CUSTOM TRAIL BOSS** In addition to or replacing Custom features, Custom Trail Boss includes:

### MECHANICAL

Air filter – heavy-duty

Differential – heavy-duty automatic locking rear

Suspension Package – Z71 Off-Road Package, Off-Road suspension with 2-inch factory lift and monotube shocks, Hill Descent Control, skid plates and Z71 badge

Trailer Package – trailer hitch, 7-pin and 4-pin connectors, and Hitch Guidance<sup>1</sup>

Transfer case – Autotrac 2-speed electronic

### EXTERIOR

Bumpers – high-gloss Black, front and rear

Grille – high-gloss Black bar with mesh inserts and Z71 badge

Recovery hooks<sup>2</sup> – Performance Red

Tires – LT275/65R18 Goodyear Wrangler DuraTrac<sup>®</sup>



18" High-Gloss Black-Painted Aluminum Wheels (RD1)  
Standard on Custom Trail Boss



20" Painted-Aluminum Wheels with Machined Face  
and Gray Accent Pockets (N2T)  
Available on Custom Trail Boss

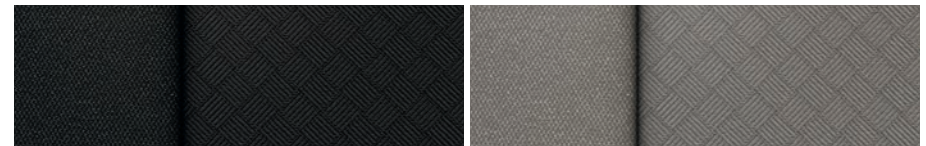


20" Black-Painted Aluminum Wheels (RD5)  
Available on Custom Trail Boss with Midnight Edition

<sup>1</sup> Read the vehicle Owner's Manual for important feature limitations and information. <sup>2</sup> To avoid the risk of injury, never use recovery hooks to tow a vehicle. See the Owner's Manual for more information.



## MODELS (CONTINUED)



Jet Black Cloth

Gideon Cloth



Jet Black Leather-Appointed Seating Surfaces

Gideon Leather-Appointed Seating Surfaces (shown)



17" Bright Silver-Painted Aluminum  
Wheels (Q5U)  
Standard on LT



18" Bright Silver-Painted Aluminum  
Wheels (PZX)  
Available on LT



20" Painted-Aluminum Wheels  
with Machined Face and Argent  
Metallic Pockets (RD4)  
Available on LT

**LT** In addition to or replacing WT features, LT includes:

### MECHANICAL

Engine – 2.7L Turbo (L3B) with auto stop/start

Transmission – 8-speed automatic

### EXTERIOR

Bumpers – chrome, front and rear

Door handles – body-color

Glass – deep-tinted behind front doors

Grille – chrome bars with high-gloss Black mesh inserts

Headlamps – LED reflector headlamps and LED signature daytime running lamps

Mirror caps – chrome

Mirrors – heated, power-adjustable with driver spotter mirror

Tailgate – manual with EZ Lift

### INTERIOR

Air conditioning – manual, single-zone, semi-automatic

Compass – located in instrument cluster

Cruise control – electronic with Set and Resume Speed

Driver Information Center – 4.2-inch diagonal color display and driver personalization

Entertainment – Chevrolet Infotainment 3 system<sup>1</sup> with 8-inch diagonal color touch-screen, AM/FM stereo, Bluetooth<sup>®</sup> audio streaming<sup>2</sup> for two active devices, voice command pass-through to compatible phone, and Apple CarPlay<sup>®3</sup> and Android Auto<sup>™4</sup> compatibility

Floor covering – color-keyed carpeting

Floor mats – vinyl, front and rear

Media – two USB ports<sup>5</sup> on instrument panel

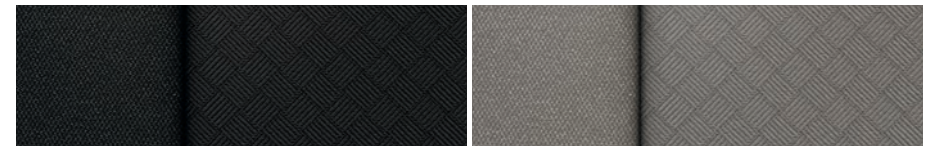
Remote Keyless Entry

Seat – front 40/20/40 split-bench with covered armrest storage

Steering wheel – mounted audio, cruise and phone controls

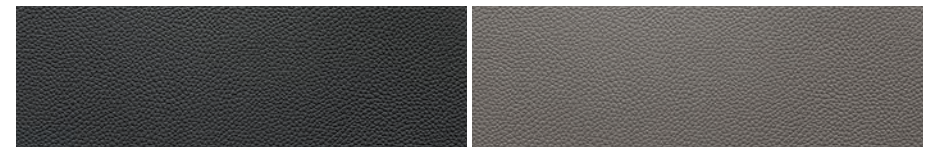
<sup>1</sup> Chevrolet Infotainment System functionality varies by model. Full functionality requires compatible Bluetooth and smartphone, and USB connectivity for some devices. <sup>2</sup> Go to [my.chevrolet.com/learnAbout/bluetooth](http://my.chevrolet.com/learnAbout/bluetooth) to find out which phones are compatible with the vehicle. Full Bluetooth feature functionality varies by device, model, and software version. <sup>3</sup> Vehicle user interface is a product of Apple and its terms and privacy statements apply. Requires compatible iPhone and data plan rates apply. <sup>4</sup> Vehicle user interface is a product of Google and its terms and privacy statements apply. Requires the Android Auto app on Google Play and an Android compatible smartphone running Android 5.0 Lollipop or higher. Data plan rates apply. <sup>5</sup> Not compatible with all devices.

## MODELS (CONTINUED)



Jet Black Cloth

Gideon Cloth



Jet Black Leather-Appointed Seating Surfaces (shown)

Gideon Leather-Appointed Seating Surfaces



18" Bright Silver-Painted Aluminum Wheels (PZX)  
Standard on RST



20" Painted-Aluminum Wheels with Machined Face  
and Argent Metallic Pockets (RD4)  
Available on RST



22" High-Gloss Black-Painted Aluminum Wheels (SGM)  
Available on RST with Rally Edition

**RST** In addition to or replacing LT features, RST includes:

### EXTERIOR

Bumpers – body-color, front and rear

Cargo area lighting – LED, in pickup bed, key fob-activated

Chevrolet bowtie emblems – Black

Foglamps – LED

Grille – body-color bars with high-gloss Black mesh inserts

Mirror caps – high-gloss Black

Recovery hooks<sup>1</sup> – Black

Tailgate – EZ Lift, includes power lock and release

Taillamps – LED

Tires – P265/65R18 all-season

### INTERIOR

Defogger – rear-window

Keyless Open and Start

Media – two USB ports<sup>2</sup>; second-row, charge-only

Power outlet – 12-volt auxiliary, rear

Remote vehicle starter system

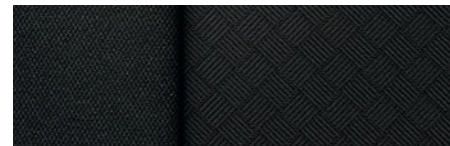
Seat – front 40/20/40 split-bench with covered armrest storage and lockable underseat storage

Steering column – electric lock control

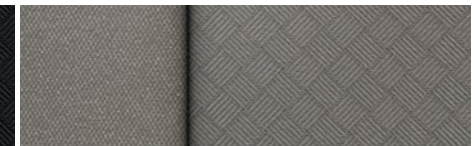
Theft-deterrent system – unauthorized entry

<sup>1</sup> To avoid the risk of injury, never use recovery hooks to tow a vehicle. See the Owner's Manual for more information. <sup>2</sup> Not compatible with all devices.

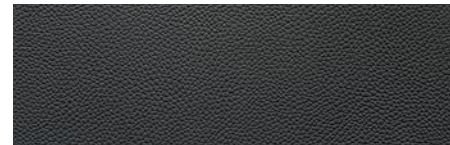
## MODELS (CONTINUED)



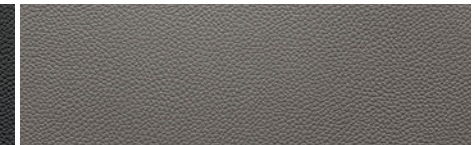
Jet Black Cloth



Gideon Cloth



Jet Black Leather-Appointed Seating Surfaces



Gideon Leather-Appointed Seating Surfaces (shown)



18" High-Gloss Black-Painted Aluminum Wheels (RD1)  
Standard on LT Trail Boss



20" Painted-Aluminum Wheels with Machined Face  
and Gray Accent Pockets (N2T)  
Available on LT Trail Boss



20" Black-Painted Aluminum Wheels (RD5)  
Available on LT Trail Boss with Midnight Edition

**LT TRAIL BOSS** In addition to or replacing RST features, LT Trail Boss includes:

### MECHANICAL

Air filter – heavy-duty

Differential – heavy-duty automatic locking rear

Engine – 5.3L EcoTec3 V8 (L84) with Dynamic Fuel Management

Exhaust – dual-outlet with polished tips

Rear axle ratio – 3.23

Suspension Package – Z71 Off-Road Package, Off-Road suspension with 2-inch factory lift, monotube shocks, Hill Descent Control, skid plates and Z71 badge

Trailer Package – trailer hitch, 7-pin and 4-pin connectors, and Hitch Guidance<sup>1</sup>

Transfer case – Autotrac 2-speed electronic

Transmission – 10-speed automatic

### EXTERIOR

Bumpers – high-gloss Black, front and rear

Door handles – high-gloss Black

Grille – high-gloss Black bars with mesh inserts and Z71 badge

Recovery hooks<sup>2</sup> – Performance Red

Tires – LT275/65R18 Goodyear Wrangler DuraTrac<sup>®</sup>

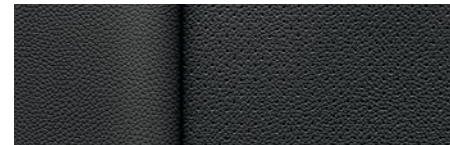
### INTERIOR

Floor liners – all-weather, front and rear with Z71 logo

Steering wheel – leather-wrapped

<sup>1</sup> Read the vehicle Owner's Manual for important feature limitations and information. <sup>2</sup> To avoid the risk of injury, never use recovery hooks to tow a vehicle. See the Owner's Manual for more information.

## MODELS (CONTINUED)



Jet Black Perforated Leather-Appointed Seating Surfaces (shown)



Gideon Perforated Leather-Appointed Seating Surfaces



18" Bright Silver-Painted Aluminum Wheels (PZX)  
Standard on LTZ



20" Polished-Finish Aluminum Wheels (RD2)  
Available on LTZ

**LTZ** In addition to or replacing RST features, LTZ includes:

### MECHANICAL

Differential – heavy-duty automatic locking rear

Engine – 5.3L EcoTec3 V8 (L84) with Dynamic Fuel Management

Rear axle ratio – 3.23

Trailer Package – trailer hitch, 7-pin and 4-pin connectors, Hitch Guidance with Hitch View<sup>1</sup>, Trailer Tire Pressure Monitoring System, Advanced Trailering System and integrated trailer brake controller

### EXTERIOR

Bumpers – chrome, front and rear

Chevrolet bowtie emblems – Gold

Door handles – chrome

Grille – chrome bars with high-gloss Black mesh and chrome inserts

Mirror caps – chrome

Mirrors – heated, power-adjustable, power-folding with memory and driver-side auto-dimming features, puddle lamps, and side perimeter lighting

Power outlet – 120-volt (up to 400 watts, shared with instrument panel 120-volt outlet), bed-mounted

Wheelhouse liners – rear

### INTERIOR

Air conditioning – automatic, dual-zone with individual climate settings for driver and front passenger

Entertainment – Chevrolet Infotainment 3 Plus system<sup>2</sup> with 8-inch diagonal HD color touch-screen, AM/FM stereo, HD Radio,<sup>3</sup> Bluetooth<sup>®</sup> audio streaming<sup>3</sup> for two active devices, Apple CarPlay<sup>®4</sup> and Android Auto<sup>™5</sup> compatibility, voice recognition and in-vehicle apps<sup>6</sup>

Media – two USB ports<sup>7</sup> (four total) and SD card reader on instrument panel

Memory – driver seat and exterior mirror settings

Mirror – rearview, auto-dimming

Power outlet – 120-volt (up to 400 watts, shared with cargo bed 120-volt outlet), on instrument panel

### INTERIOR (CONTINUED)

Rear Vision Camera<sup>1</sup> – HD

Seat – rear 60/40 full-length folding bench; Crew Cab includes seatback storage on left and right side, center foldout armrest with two cup holders and underseat storage

Seats – heated, 10-way power driver and front outboard passenger seat adjusters with power lumbar control

SiriusXM<sup>®</sup> with 360L<sup>8</sup> – All Access Package with 3-month trial subscription

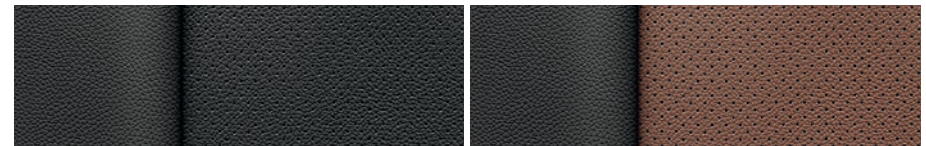
Steering column – manual tilt/telescoping

Steering wheel – heated, leather-wrapped

Windows – power with driver and front passenger express-up/-down, rear express-down

<sup>1</sup> Read the vehicle Owner's Manual for important feature limitations and information. <sup>2</sup> Chevrolet Infotainment System functionality varies by model. Full functionality requires compatible Bluetooth and smartphone, and USB connectivity for some devices. <sup>3</sup> Go to my.chevrolet.com/learnAbout/bluetooth to find out which phones are compatible with the vehicle. Full Bluetooth feature functionality varies by device, model, and software version. <sup>4</sup> Vehicle user interface is a product of Apple and its terms and privacy statements apply. Requires compatible iPhone and data plan rates apply. <sup>5</sup> Vehicle user interface is a product of Google and its terms and privacy statements apply. Requires the Android Auto app on Google Play and an Android compatible smartphone running Android 5.0 Lollipop or higher. Data plan rates apply. <sup>6</sup> Requires active service plan and paid AT&T vehicle data plan or compatible device with 3G/4G LTE tethering data plan. Visit onstar.com for details and limitations. <sup>7</sup> Not compatible with all devices. <sup>8</sup> Certain features require a SiriusXM subscription and the Chevrolet Connected Access plan. See siriusxm.com and onstar.com for details and limitations.

## MODELS (CONTINUED)



Jet Black Perforated Leather-Appointed Seating Surfaces

Jet Black/Umbre Perforated Leather-Appointed Seating Surfaces (shown)



20" Painted-Aluminum Wheels with Machined Face and Light Argent Pockets (NZJ) Standard on High Country



22" Polished-Aluminum Wheels (RVA) Available on High Country

**HIGH COUNTRY** In addition to or replacing LTZ features, High Country includes:

### MECHANICAL

Exhaust – dual-outlet with polished tips

Transfer case – Autotrac 2-speed electronic (4x4 models)

### EXTERIOR

Assist steps – chrome, wheel-to-wheel

Bedliner – Black Chevytec spray-on bedliner with High Country logo

Bumpers – body-color, front and rear

Grille – chrome bars with high-gloss Black mesh and chrome/bronze inserts

Headlamps – high-intensity discharge LED reflector headlamps with LED daytime running lamps

Recovery hooks<sup>1</sup> – chrome

Tailgate – power-up/-down tailgate with power lock and release

### INTERIOR

Audio system – Bose premium 7-speaker sound system with Richbass woofer

Console – floor-mounted console with cup holders, cell phone storage, power cord management and hanging file folder capability

Driver Information Center – enhanced 8-inch diagonal multi-color configurable display, includes analog speedometer and tachometer

Entertainment – Chevrolet Infotainment 3 Premium with Navigation system<sup>2</sup>; includes Connected Navigation<sup>3</sup> and 8-inch diagonal HD color touch-screen, AM/FM stereo, HD Radio, Bluetooth<sup>®</sup> audio streaming<sup>4</sup> for two active devices, Apple CarPlay<sup>®5</sup> and Android Auto<sup>™6</sup> compatibility, enhanced voice recognition and additional memory for in-vehicle apps<sup>7</sup>

Front and Rear Park Assist<sup>8</sup> – ultrasonic

Lane Change Alert with Side Blind Zone Alert<sup>8</sup>

Media – two USB ports<sup>9</sup> (six total), SD card reader and auxiliary input jack inside center console

Rear Cross Traffic Alert<sup>8</sup>

Seats – front bucket seats with center console

Seats – ventilated driver and front passenger, heated rear outboard seating positions

Window – power-sliding rear window with defogger

Wireless charging<sup>10</sup>

<sup>1</sup> To avoid the risk of injury, never use recovery hooks to tow a vehicle. See the Owner's Manual for more information. <sup>2</sup> Chevrolet Infotainment System functionality varies by model. Full functionality requires compatible Bluetooth and smartphone, and USB connectivity for some devices. Map coverage available in the United States, Puerto Rico and Canada. <sup>3</sup> Connected Navigation and Real-time Points of Interest (POI) only available on properly equipped vehicles. Requires paid plan or trial. Map coverage available in the United States, Puerto Rico and Canada. Visit onstar.com for details and limitations. <sup>4</sup> Go to [my.chevrolet.com/learnAbout/bluetooth](http://my.chevrolet.com/learnAbout/bluetooth) to find out which phones are compatible with the vehicle. Full Bluetooth feature functionality varies by device, model, and software version. <sup>5</sup> Vehicle user interface is a product of Apple and its terms and privacy statements apply. Requires compatible iPhone and data plan rates apply. <sup>6</sup> Vehicle user interface is a product of Google and its terms and privacy statements apply. Requires the Android Auto app on Google Play and an Android compatible smartphone running Android 5.0 Lollipop or higher. Data plan rates apply. <sup>7</sup> Requires active service plan and paid AT&T vehicle data plan or compatible device with 3G/4G LTE tethering data plan. Visit onstar.com for details and limitations. <sup>8</sup> Read the vehicle Owner's Manual for important feature limitations and information. <sup>9</sup> Not compatible with all devices. <sup>10</sup> The system wirelessly charges one compatible mobile device. Some phones have built-in wireless charging technology and others require a special adaptor/back cover. To check for phone or other device compatibility, see [my.chevrolet.com/learn](http://my.chevrolet.com/learn) or consult your carrier.

## ENGINES



### 4.3L ECOTEC3 V6 (LV3)

Standard on WT, Custom and Custom Trail Boss.

EcoTec3 technology includes Active Fuel Management, Direct Injection and Variable Valve Timing

6-speed automatic transmission

285 hp @ 5300 rpm

305 lb.-ft. of torque @ 3900 rpm

EPA-estimated MPG city/highway: 16/21 (2WD), 15/20 (4x4), 14/18 (Trail Boss)

Max trailering: 7,900 lbs!<sup>2</sup>

Max payload: 2,250 lbs!<sup>3</sup>

Bore and stroke: 99.6 mm x 92 mm

Displacement: 4301 cc (262 cu. in.)

Compression ratio: 11.0:1

Ignition: Coil-near-plug



### 5.3L ECOTEC3 V8 (L82)

Available on WT, Custom and Custom Trail Boss.

EcoTec3 technology includes Active Fuel Management, Direct Injection and Variable Valve Timing

6-speed automatic transmission

355 hp @ 5600 rpm

383 lb.-ft. of torque @ 4100 rpm

EPA-estimated MPG city/highway: 15/21 (2WD), 15/20 (4x4), 14/18 (Trail Boss)

Max trailering: 11,000 lbs!<sup>4</sup>

Max payload: 2,180 lbs!<sup>3</sup>

Bore and stroke: 96.01 mm x 92 mm

Displacement: 5328 cc (325 cu. in.)

Compression ratio: 11.0:1

Ignition: Coil-near-plug



### 2.7L TURBO (L3B)

Standard on LT and RST. Available on WT and Custom.

Engine technology includes dual-volute turbocharger, Active Thermal Management, Active Fuel Management, Direct Injection and Variable Valve Timing

8-speed automatic transmission

310 hp @ 5600 rpm

348 lb.-ft. of torque @ 1500 rpm

EPA-estimated MPG city/highway: 20/23 (2WD), 19/22 (WT 2WD; 4x4)

Max trailering: 6,800 lbs!<sup>5</sup>

Max payload: 2,070 lbs!<sup>6</sup>

Bore and stroke: 92.25 mm x 102 mm

Displacement: 2726 cc (166 cu. in.)

Compression ratio: 11.5:1

Ignition: Coil-near-plug

<sup>1</sup> Before you buy a vehicle or use it for trailering, carefully review the Trailering section of the Owner's Manual. The weight of passengers, cargo and options or accessories may reduce the amount you can tow. <sup>2</sup> Requires Silverado 1500 Regular Cab Long Bed 2WD. <sup>3</sup> These maximum payload ratings are intended for comparison purposes only. Before you buy a vehicle or use it to haul people or cargo, carefully review the Vehicle Loading section of the Owner's Manual and check the carrying capacity of your specific vehicle on the label on the inside of the driver door jamb. <sup>4</sup> Requires Silverado 1500 Crew Cab Short Bed Custom 4x4 with available Custom Max Trailering Package. <sup>5</sup> Requires Silverado 1500 Double Cab Standard Bed 2WD, Crew Cab Short Bed 2WD or Crew Cab Standard Bed 2WD. <sup>6</sup> Requires Silverado 1500 Double Cab Standard Bed 2WD.

## ENGINES (CONTINUED)



### 5.3L ECOTEC3 V8 (L84)

Standard on LT Trail Boss, LTZ and High Country. Available on LT and RST.

EcoTec3 technology includes Dynamic Fuel Management, Direct Injection and Variable Valve Timing

8-speed automatic transmission (LT, RST, LTZ and High Country 2WD)

10-speed automatic transmission (LT Trail Boss and High Country 4x4)

355 hp @ 5600 rpm

383 lb.-ft. of torque @ 4100 rpm

EPA-estimated MPG city/highway: 17/24 (2WD XFE), 17/23 (2WD), 16/22 (4x4), 16/21 (Trail Boss)

Max trailering: 11,600 lbs.<sup>1,2</sup>

Max payload: 2,190 lbs.<sup>3</sup>

Bore and stroke: 96.01 mm x 92 mm

Displacement: 5328 cc (325 cu. in.)

Compression ratio: 11.0:1

Ignition: Coil-near-plug



### 6.2L ECOTEC3 V8 (L87)

Available on Custom Trail Boss, RST, LT Trail Boss, LTZ and High Country.

EcoTec3 technology includes Dynamic Fuel Management, Direct Injection and Variable Valve Timing

10-speed automatic transmission

420 hp @ 5600 rpm

460 lb.-ft. of torque @ 4100 rpm

EPA-estimated MPG city/highway: 16/20 (4x4), 15/19 (LT Trail Boss 4x4), 14/18 (Custom Trail Boss 4x4)

Max trailering: 13,400 lbs.<sup>4</sup>

Max payload: 2,090 lbs.<sup>5</sup>

Bore and stroke: 103.25 mm x 92 mm

Displacement: 6162 cc (376 cu. in.)

Compression ratio: 11.0:1

Ignition: Coil-near-plug



### DURAMAX 3.0L TURBO-DIESEL I-6 (LM2)

Available on LT, RST, LTZ and High Country (not available on Crew Cab Standard Bed 2WD models).

Engine technology includes variable-geometry turbocharger, Active Thermal Management and high-pressure Direct Injection

10-speed automatic transmission

277 hp @ 3750 rpm

460 lb.-ft. of torque @ 1500 rpm

EPA-estimated MPG city/highway: 23/33 (2WD), 23/29 (4x4)

Max trailering: 9,300 lbs.<sup>6</sup>

Max payload: 1,870 lbs.<sup>7</sup>

Bore and stroke: 84 mm x 90 mm

Displacement: 2992 cc (183 cu. in.)

Compression ratio: 15.0:1

<sup>1</sup> Before you buy a vehicle or use it for trailering, carefully review the Trailering section of the Owner's Manual. The weight of passengers, cargo and options or accessories may reduce the amount you can tow. <sup>2</sup> Requires Silverado 1500 Double Cab Standard Bed 2WD with available Max Trailering Package. <sup>3</sup> These maximum payload ratings are intended for comparison purposes only. Before you buy a vehicle or use it to haul people or cargo, carefully review the Vehicle Loading section of the Owner's Manual and check the carrying capacity of your specific vehicle on the label on the inside of the driver door jamb. <sup>4</sup> Requires Silverado 1500 Double Cab Standard Bed RST 4x4 with available Max Trailering Package and 20" wheels. <sup>5</sup> Requires Silverado 1500 Double Cab Standard Bed 4x4 with available Max Trailering Package. <sup>6</sup> Requires Silverado 1500 Double Cab Standard Bed 4x4 or Crew Cab Short Bed 4x4. <sup>7</sup> Requires Silverado 1500 Crew Cab Short Bed 2WD or 4x4.

## SPECIFICATIONS

● STANDARD ○ AVAILABLE – NOT AVAILABLE

	WT	CUSTOM	CUSTOM TB	LT	RST	LT TB	LTZ	HIGH COUNTRY
<b>EXTERIOR</b>								
Assist steps: Chrome, wheel-to-wheel (Crew Cab) (Custom requires available Custom Max Trailing Package)	–	○	–	○	○	–	○	●
Power-retractable running boards with rearward articulating, foot-activated to provide bed access (Crew Cab) (LTZ requires available Safety Package)	–	–	–	–	–	–	○	○
Bedliner: Chevytec spray-on, Black with logo (bed only; tailgate has Black composite inner panel) (LT, RST and LT Trail Boss require available Bed Protection Package)	○	○	○	○	○	○	○	●
Tailgate: EZ Lift, power lock and release (WT requires available WT Convenience Package; Custom and Custom Trail Boss require available Custom Convenience Package; LT requires available LT Convenience Package)	○	○	○	○	●	●	●	○
Power-up/-down tailgate function, power lock and release (LTZ requires available LTZ Convenience Package, LTZ Plus Package, LTZ Texas Edition or LTZ Premium Package)	–	–	–	–	–	–	○	●
Wheelhouse liners: Rear (LT, RST and LT Trail Boss require available Bed Protection Package)	–	–	–	○	○	○	●	●
<b>MECHANICAL</b>								
4.3L EcoTec3 V6 engine with Active Fuel Management and 6-speed automatic transmission; 285 hp @ 5300 rpm, 305 lb.-ft. of torque @ 3900 rpm	●	●	●	–	–	–	–	–
2.7L Turbo engine with Active Fuel Management and 8-speed automatic transmission; 310 hp @ 5600 rpm, 348 lb.-ft. of torque @ 1500 rpm (WT requires Double Cab or Crew Cab and available WT Value Package or WT Convenience Package, cloth split-bench front seat with armrest storage, single-zone semi-automatic air conditioning, OnStar, and 120-volt bed- and instrument panel-mounted power outlets [400 watts shared]; Custom requires available Custom Convenience Package, Infotainment Package, split-bench front seat with armrest storage, single-zone semi-automatic air conditioning, and 120-volt bed- and instrument panel-mounted power outlets [400 watts shared])	○	○	–	●	●	–	–	–
5.3L EcoTec3 V8 engine with Active Fuel Management and 6-speed automatic transmission; 355 hp @ 5600 rpm, 383 lb.-ft. of torque @ 4100 rpm	○	○	○	–	–	–	–	–
5.3L EcoTec3 V8 engine with Dynamic Fuel Management and 8-speed automatic transmission (LT, RST, LTZ and High Country 2WD) or 10-speed automatic transmission (LT Trail Boss and High Country 4x4); 355 hp @ 5600 rpm, 383 lb.-ft. of torque @ 4100 rpm	–	–	–	○	○	●	●	●

	WT	CUSTOM	CUSTOM TB	LT	RST	LT TB	LTZ	HIGH COUNTRY
<b>MECHANICAL (CONTINUED)</b>								
6.2L EcoTec3 V8 engine with Dynamic Fuel Management and 10-speed automatic transmission; 420 hp @ 5600 rpm, 460 lb.-ft. of torque @ 4100 rpm (4x4 models) (Custom Trail Boss requires available Infotainment Package)	–	–	○	–	○	○	○	○
Duramax 3.0L Turbo-Diesel I-6 engine and 10-speed automatic transmission; 277 hp @ 3750 rpm, 460 lb.-ft. of torque @ 1500 rpm; includes engine block heater (not available on Crew Cab Standard Bed 2WD models) (LT requires available LT Convenience Package, heavy-duty automatic locking rear differential and Trailing Package; RST requires available RST Convenience Package or Convenience Package with Bucket Seats, heavy-duty automatic locking rear differential and Trailing Package)	–	–	–	○	○	–	○	○
Auto stop/start (WT and Custom require available 2.7L Turbo engine; Custom Trail Boss requires available 6.2L V8 engine)	○	○	○	●	●	●	●	●
Differential: Heavy-duty automatic locking rear	○	○	●	○	○	●	●	●
Engine block heater	○	○	○	○	○	○	○	○
Exhaust: Dual-outlet, with polished tips (Custom requires available 5.3L V8 engine; Custom Trail Boss requires available 5.3L V8 engine or 6.2L V8 engine; LT requires available Z71 Off-Road Package; RST and LTZ require available Z71 Off-Road Package or 6.2L V8 engine)	–	○	○	○	○	●	○	●
Hitch Guidance <sup>1</sup> (WT, Custom, LT and RST require available Trailing Package)	○	○	●	○	○	●	●	●
Skid plates (4x4 models) (WT requires available Work Truck Package, Z71 Off-Road Package or Snow Plow Prep Package; LT and LTZ require available Z71 Off-Road Package or Snow Plow Prep Package; RST and High Country require available Z71 Off-Road Package)	○	–	●	○	○	●	○	○
Trailer brake controller: Integrated (Double Cab and Crew Cab WT require available Trailing Package; Regular Cab WT requires available Trailing Package and WT Convenience Package; Custom, LT and RST require available Trailing Package)	○	○	○	○	○	○	●	●
Trailer Tire Pressure Monitor System: Set of four sensors (separate installation required) (LT, RST and LT Trail Boss require available Advanced Trailing Package)	–	–	–	○	○	○	○	○
Transfer case: Single-speed, electronic Autotrac with rotary dial control (4x4 models)	●	●	–	●	●	–	●	–
2-speed, electronic Autotrac with rotary dial control (4x4 models) (Double Cab and Crew Cab WT require available Z71 Off-Road Package; LT requires available Z71 Off-Road Package; RST and LTZ require available Z71 Off-Road Package or 6.2L V8 engine)	○	–	●	○	○	●	○	●

<sup>1</sup> Read the vehicle Owner's Manual for important feature limitations and information.



## SPECIFICATIONS (CONTINUED)

● STANDARD ○ AVAILABLE – NOT AVAILABLE

	WT	CUSTOM	CUSTOM TB	LT	RST	LT TB	LTZ	HIGH COUNTRY
<b>SAFETY</b>								
Automatic Emergency Braking <sup>1</sup> (requires available Safety Package II)	–	–	–	–	–	–	○	○
Following Distance Indicator <sup>1</sup> (requires available Safety Package II)	–	–	–	–	–	–	○	○
Forward Collision Alert <sup>1</sup> (requires available Safety Package II)	–	–	–	–	–	–	○	○
Front and Rear Park Assist: <sup>1</sup> Ultrasonic (WT requires available WT Safety Package; LT, RST, LT Trail Boss and LTZ require available Safety Package)	○	–	–	○	○	○	○	●
Front Pedestrian Braking <sup>1</sup> (requires available Safety Package II)	–	–	–	–	–	–	○	○
IntelliBeam headlamps: Automatic high beam on/off (requires available Safety Package II)	–	–	–	–	–	–	○	○
Lane Change Alert with Side Blind Zone Alert <sup>1</sup> (WT requires available WT Safety Package; LT, RST, LT Trail Boss and LTZ require available Safety Package)	○	–	–	○	○	○	○	●
Lane Keep Assist with Lane Departure Warning <sup>1</sup> (requires available Safety Package II)	–	–	–	–	–	–	○	○
1 month of OnStar Safety & Security Plan <sup>2</sup> coverage, which includes Automatic Crash Response, Emergency Services, Crisis Assist, Stolen Vehicle Assistance, Roadside Assistance and Turn-by-Turn Navigation <sup>3</sup> (Custom and Custom Trail Boss require available Infotainment Package)	○	○	○	●	●	●	●	●
Rear Cross Traffic Alert <sup>1</sup> (WT requires available WT Safety Package; LT, RST, LT Trail Boss and LTZ require available Safety Package)	○	–	–	○	○	○	○	●
Safety Alert Seat <sup>1</sup> (requires available Safety Package II)	–	–	–	–	–	–	○	○
Teen Driver technology	●	●	●	●	●	●	●	●
Theft-deterrent system: Unauthorized entry (Custom and Custom Trail Boss require available Custom Convenience Package; LT requires available LT Convenience Package or Remote Start Package)	–	○	○	○	●	●	●	●

	WT	CUSTOM	CUSTOM TB	LT	RST	LT TB	LTZ	HIGH COUNTRY
<b>INTERIOR</b>								
Adaptive Cruise Control – Camera <sup>1</sup> (requires available Safety Package II)	–	–	–	–	–	–	○	○
Compass: Display in instrument cluster (WT, Custom and Custom Trail Boss require available OnStar)	○	○	○	●	●	●	●	●
Console: Floor-mounted, with cup holders, cell phone storage, power cord management and hanging file holder capability (RST and LT Trail Boss require available Convenience Package with Bucket Seats; LTZ requires available LTZ Convenience Package)	–	–	–	–	○	○	○	●
Driver Information Center: 3.5-inch diagonal monochromatic display 4.2-inch diagonal color display and driver personalization Enhanced with 8-inch diagonal multi-color configurable display, includes analog speedometer and tachometer (LTZ requires available Technology Package)	●	●	●	–	–	–	–	–
Head-Up Display: 15-inch diagonal multi-color (requires available Technology Package)	–	–	–	–	–	–	○	○
Keyless Open and Start (LT requires available LT Convenience Package)	–	–	–	○	●	●	●	●
Power outlets: 120-volt, instrument panel- and bed-mounted (400 watts combined) (WT requires available WT Convenience Package; Custom requires available 2.7L Turbo engine; LT, RST and LT Trail Boss require available Convenience Package II)	○	○	–	○	○	○	●	●
Rear Camera Mirror <sup>1</sup> (requires available Technology Package)	–	–	–	–	–	–	○	○
Steering column: Manual tilt/telescoping (LT requires available LT Convenience Package; RST requires available RST Convenience Package or Convenience Package with Bucket Seats; LT Trail Boss requires available LT Trail Boss Convenience Package or Convenience Package with Bucket Seats)	–	–	–	○	○	○	●	●
Sunroof: Power (Crew Cab) (LT, RST and LT Trail Boss require available Convenience Package II; LTZ requires available LTZ Convenience Package)	–	–	–	○	○	○	○	○
Wireless charging <sup>4</sup> (LTZ requires available LTZ Convenience Package II)	–	–	–	–	–	–	○	●

<sup>1</sup> Read the vehicle Owner's Manual for important feature limitations and information. <sup>2</sup> OnStar plan, working electrical system, cell reception and GPS signal required. OnStar links to emergency services. Not all vehicles may transmit all crash data. Roadside services provided by Allstate Roadside Services for vehicles only. Limitations and restrictions apply. Stolen Vehicle Assistance requires armed GM factory-installed theft-deterrent system, contact method on file and enrollment to receive alerts. Services are intended to assist with vehicle recovery and do not prevent theft or protect against damage or loss. Visit [onstar.com](http://onstar.com) for coverage map, details and system limitations. Availability subject to change. <sup>3</sup> Advisor-based Turn-by-Turn Navigation is subject to User Terms and limitations, and varies by vehicle model. Map coverage available in the United States, Puerto Rico and Canada. <sup>4</sup> The system wirelessly charges one compatible mobile device. Some phones have built-in wireless charging technology and others require a special adaptor/back cover. To check for phone or other device compatibility, see [my.chevrolet.com/learn](http://my.chevrolet.com/learn) or consult your carrier.

## SPECIFICATIONS (CONTINUED)

● STANDARD ○ AVAILABLE – NOT AVAILABLE

	WT	CUSTOM	CUSTOM TB	LT	RST	LT TB	LTZ	HIGH COUNTRY
<b>ENTERTAINMENT</b>								
Chevrolet Infotainment 3 system <sup>1</sup> with 7-inch diagonal color touch-screen, AM/FM stereo, Bluetooth <sup>2</sup> audio streaming <sup>2</sup> for two active devices, voice command pass-through to compatible phone, and Apple CarPlay <sup>3</sup> and Android Auto <sup>4</sup> compatibility	●	●	●	–	–	–	–	–
Chevrolet Infotainment 3 system <sup>1</sup> with 8-inch diagonal color touch-screen, includes features listed above	–	–	–	●	●	●	–	–
Chevrolet Infotainment 3 Plus system <sup>1</sup> with 8-inch diagonal HD color touch-screen, includes features listed above, voice recognition and in-vehicle apps <sup>5</sup> (LT, RST and LT Trail Boss require available Convenience Package II)	–	–	–	○	○	○	●	–
Chevrolet Infotainment 3 Premium with Navigation system <sup>1</sup> ; includes Plus system features, Connected Navigation <sup>6</sup> ; enhanced voice recognition and additional memory for in-vehicle apps <sup>5</sup> (LTZ requires available LTZ Convenience Package II)	–	–	–	–	–	–	○	●

	WT	CUSTOM	CUSTOM TB	LT	RST	LT TB	LTZ	HIGH COUNTRY
<b>ENTERTAINMENT (CONTINUED)</b>								
Bose premium 7-speaker sound system with Richbass subwoofer (RST and LT Trail Boss require available Convenience Package II; LTZ requires available LTZ Convenience Package II)	–	–	–	–	○	○	○	●
SiriusXM <sup>8,7</sup> All Access Package with 3-month trial subscription (included and only available with Infotainment Package)	–	○	○	–	–	–	–	–
SiriusXM <sup>8</sup> with 360L <sup>8</sup> – All Access Package with 3-month trial subscription (LT, RST and LT Trail Boss require available Convenience Package II)	–	–	–	○	○	○	●	●
HD Radio <sup>9</sup> (LT, RST and LT Trail Boss require available Convenience Package II)	–	–	–	○	○	○	●	●
Chevrolet Connected Access <sup>9</sup> with 10 years of standard connectivity, which currently includes Vehicle Diagnostics and Dealer Maintenance Notification (WT, Custom and Custom Trail Boss require available OnStar)	○	○	○	●	●	●	●	●
Available 4G LTE Wi-Fi <sup>10</sup> Hotspot for up to seven devices, includes 1 month or 3 GB of data (whichever comes first) (WT, Custom and Custom Trail Boss require available OnStar)	○	○	○	○	○	○	○	○
OnStar <sup>11</sup> and Chevrolet connected services capable (Custom and Custom Trail Boss require available Infotainment Package)	○	○	○	●	●	●	●	●

<sup>1</sup> Chevrolet Infotainment System functionality varies by model. Full functionality requires compatible Bluetooth and smartphone, and USB connectivity for some devices. Map coverage available in the United States, Puerto Rico and Canada. <sup>2</sup> Go to my.chevrolet.com/learnAbout/bluetooth to find out which phones are compatible with the vehicle. Full Bluetooth feature functionality varies by device, model and software version. <sup>3</sup> Vehicle user interface is a product of Apple and its terms and privacy statements apply. Requires compatible iPhone and data plan rates apply. <sup>4</sup> Vehicle user interface is a product of Google and its terms and privacy statements apply. Requires the Android Auto app on Google Play and an Android compatible smartphone running Android 5.0 Lollipop or higher. Data plan rates apply. <sup>5</sup> Requires active service plan and paid AT&T vehicle data plan or compatible device with 3G/4G LTE tethering data plan. Visit onstar.com for details and limitations. <sup>6</sup> Connected Navigation and Real-time Points of Interest (POI) only available on properly equipped vehicles. Requires paid plan or trial. Map coverage available in the United States, Puerto Rico and Canada. Visit onstar.com for details and limitations. <sup>7</sup> If you decide to continue service after your trial, your selected subscription plan will automatically renew thereafter. You will be charged at then-current rates. Fees and taxes apply. Please see the SiriusXM Customer Agreement at siriusxm.com for complete terms and how to cancel, which includes calling SiriusXM at 1-866-635-2349. All fees and programming are subject to change. <sup>8</sup> Certain features require a SiriusXM subscription and the Chevrolet Connected Access plan. See siriusxm.com and onstar.com for details and limitations. <sup>9</sup> Standard connectivity available only to original purchaser for 10 years. Services enabled by Connected Access are subject to change. Does not include emergency or security services. Diagnostic capabilities vary by model and service plan. Message and data rates may apply. Requires contact method on file and enrollment to receive alerts. Not all issues will deliver alerts. Visit onstar.com for details and limitations. <sup>10</sup> Service varies with conditions and location. Requires active service plan. Data plans offered by AT&T. Visit onstar.com for details and limitations. Availability subject to change. <sup>11</sup> Visit onstar.com for coverage map, details and system limitations. Services vary by model.

## AVAILABLE PACKAGES

● STANDARD ○ AVAILABLE – NOT AVAILABLE

	WT	CUSTOM	CUSTOM TB	LT	RST	LT TB	LTZ	HIGH COUNTRY
<b>MECHANICAL</b>								
<b>Work Truck Package</b>	○	–	–	–	–	–	–	–
Skid plates and heavy-duty air filter (not available with Z71 Off-Road Package or Snow Plow Prep Package)								
<b>Snow Plow Prep Package (4x4 models)</b>	○	–	–	○	–	–	○	–
Power feed for backup and roof emergency light, 220-amp alternator, heavy-duty air filter, skid plates and heavy-duty front springs (WT requires available 5.3L V8 engine and 17" painted-steel wheels [RD6]; LT requires available Z71 Off-Road Package and 5.3L V8 engine; LTZ requires 5.3L V8 engine and 18" Bright Silver-painted aluminum wheels [PZX])								
<b>Trailer Package</b>	○	○	●	○	○	●	●	●
Trailer hitch, 7-pin and 4-pin connectors, and Hitch Guidance <sup>1</sup>								
<b>Custom Max Trailering Package (Crew Cab Short Bed 4x4)</b>	–	○	–	–	–	–	–	–
Trailer Package, Max Trailering Package, trailering mirrors, dual-outlet exhaust with polished tips, chrome wheel-to-wheel assist steps, Chevytec spray-on bedliner, 3.73 axle ratio, Cloth Rear Seat with Storage Package, all-weather floor liners, tiered storage, rear wheelhouse liners, rubber bed mat, tri-fold hard tonneau cover and cargo tie-down rings (requires available Custom Convenience Package, 5.3L V8 engine and automatic locking rear differential)								
<b>Advanced Trailering Package</b>	–	–	–	○	○	○	●	●
Hitch Guidance with Hitch View <sup>1</sup> ; integrated trailer brake controller and Advanced Trailering System (LT and RST require available Convenience Package II and either Trailering Package or Max Trailering Package; LT Trail Boss requires available Convenience Package II)								
<b>Max Trailering Package</b>	–	–	–	○	○	–	○	○
9.76" rear axle, enhanced cooling radiator, revised shock tuning for increased control, heavier-duty rear springs, increased RGAWR <sup>2</sup> and 220-amp alternator; LT and RST include trailer brake controller; LT, RST, LTZ and High Country include 3.42 axle ratio (LT and RST require available 5.3L V8 engine, Trailering Package, and heavy-duty automatic locking rear differential; LTZ requires 5.3L V8 engine or available 6.2L V8 engine; High Country requires 4x4 and available 6.2L V8 engine; not available with Z71 Off-Road Package or 22" wheels)								
<b>Fuel Economy Package (Crew Cab)</b>	–	–	–	○	–	–	–	–
18" Bright Silver-painted aluminum wheels (PZX), P265/65R18SL all-season tires and premium soft roll-up tonneau cover (requires Short Bed 2WD and available 5.3L V8 engine; not available with any other options)								
<b>Z71 Off-Road Package (4x4 models)</b>	○	–	●	○	○	●	○	○
Off-Road suspension, Hill Descent Control, skid plates, heavy-duty air filter, all-terrain tires and Z71 badge; WT includes heavy-duty automatic locking rear differential and 2-speed transfer case; Custom Trail Boss and LT Trail Boss include 2-inch factory lifted suspension and Goodyear Wrangler DuraTrac <sup>®</sup> tires; LT and RST include heavy-duty automatic locking rear differential, dual-outlet exhaust with polished tips, 18" Bright Silver-painted aluminum wheels (PZX) and 2-speed transfer case; LTZ includes 2-speed transfer case and dual-outlet exhaust with polished tips; High Country does not include Z71 badge (WT requires Double Cab or Crew Cab and available Trailering Package; not available with Work Truck Package; LT and RST require available Trailering Package; not available with 2.7L Turbo engine, Max Trailering Package or 22" wheels; LTZ not available with Max Trailering Package or 22" wheels; High Country not available with High Country Deluxe, Max Trailering Package or 22" wheels)								

	WT	CUSTOM	CUSTOM TB	LT	RST	LT TB	LTZ	HIGH COUNTRY
<b>EXTERIOR</b>								
<b>Rally Edition (late availability)</b>	–	○	–	–	○	–	–	–
Black badges, Black rally stripes, 4" Black round assist steps and Black exhaust tip(s); Custom includes Black bowtie emblem on grille and steering wheel, Chevytec spray-on bedliner and 20" Black-painted aluminum wheels (RD5); RST includes Bed Protection Package and 22" high-gloss Black-painted aluminum wheels (SGM) (available with Black, Red Hot, Silver Ice Metallic or Summit White exterior colors)								
<b>Midnight Edition (late availability)</b>	–	–	○	–	–	○	–	–
Black badges, dual-outlet exhaust with Black tips and Black exterior color; Custom Trail Boss includes Custom Convenience Package, Infotainment Package, Chevytec spray-on bedliner, all-weather floor liners with Z71 logo and Silver-hammer interior trim kit; LT Trail Boss includes high-intensity discharge LED headlamps, 4" Black round assist steps, Bed Protection Package, Convenience Package with Bucket Seats, Convenience Package II, Leather Package and trailer brake controller								
<b>Bed Protection Package</b>	–	–	–	○	○	○	–	–
Rear wheelhouse liners and Chevytec spray-on bedliner								
<b>Z71 Off-Road and Protection Package (4x4 models)</b>	–	–	–	○	○	–	○	–
Z71 Off-Road Package, Chevytec spray-on bedliner and all-weather floor liners with Z71 logo; LT and RST include rear wheelhouse liners; LTZ includes 20" polished-aluminum wheels (RD2) and all-terrain tires (LT and RST require available Trailering Package, all-terrain tires and 5.3L V8 or Duramax 3.0L engine; not available with Max Trailering Package)								
<b>INTERIOR</b>								
<b>WT Convenience Package</b>	○	–	–	–	–	–	–	–
Remote Keyless Entry, EZ Lift power lock and release tailgate, deep-tinted windows behind front doors, rear-window defogger, cruise control, and outside heated power-adjustable mirrors; Regular Cab models include power door locks and power windows with driver express-up/-down and front passenger express-down								
<b>WT Value Package</b>	○	–	–	–	–	–	–	–
WT Convenience Package and Trailering Package								
<b>WT Safety Package</b>	○	–	–	–	–	–	–	–
Front and Rear Park Assist <sup>1</sup> ; Lane Change Alert with Side Blind Zone Alert <sup>1</sup> ; Rear Cross Traffic Alert <sup>1</sup> ; chrome front and rear bumpers, high-gloss Black mirror caps and perimeter lighting; 2WD models include recovery hooks <sup>3</sup> (requires available WT Convenience Package or WT Value Package and 120-volt bed- and instrument panel-mounted power outlets [400 watts shared]; not available with 2.7L Turbo engine)								
<b>Custom Convenience Package</b>	–	○	○	–	–	–	–	–
Remote vehicle starter system, unauthorized entry theft-deterrent system, rear-window defogger, LED cargo area lighting in pickup bed, and EZ Lift power lock and release tailgate								
<b>Infotainment Package</b>	–	○	○	–	–	–	–	–
SiriusXM <sup>®4</sup> All Access Package with 3-month trial subscription and 1 month of OnStar Safety & Security Plan <sup>5</sup> coverage								
<b>Custom Value Package</b>	–	○	–	–	–	–	–	–
Custom Convenience Package, Infotainment Package and Trailering Package								

<sup>1</sup> Read the vehicle Owner's Manual for important feature limitations and information. <sup>2</sup> Rear Gross Axle Weight Rating. <sup>3</sup> To avoid the risk of injury, never use recovery hooks to tow a vehicle. See the Owner's Manual for more information. <sup>4</sup> If you decide to continue service after your trial, your selected subscription plan will automatically renew thereafter. You will be charged at then-current rates. Fees and taxes apply. Please see the SiriusXM Customer Agreement at [siriusxm.com](http://siriusxm.com) for complete terms and how to cancel, which includes calling SiriusXM at 1-866-635-2349. All fees and programming are subject to change. <sup>5</sup> OnStar plan, working electrical system, cell reception and GPS signal required. OnStar links to emergency services. Not all vehicles may transmit all crash data. Roadside services provided by Allstate Roadside Services for vehicles only. Limitations and restrictions apply. Stolen Vehicle Assistance requires armed GM factory-installed theft-deterrent system, contact method on file and enrollment to receive alerts. Services are intended to assist with vehicle recovery and do not prevent theft or protect against damage or loss. Visit [onstar.com](http://onstar.com) for details and limitations. Availability subject to change.

## AVAILABLE PACKAGES (CONTINUED)

● STANDARD ○ AVAILABLE – NOT AVAILABLE

	WT	CUSTOM	CUSTOM TB	LT	RST	LT TB	L TZ	HIGH COUNTRY
<b>INTERIOR (CONTINUED)</b>								
<b>Cloth Rear Seat with Storage Package (Crew Cab)</b>	–	○	○	○	○	○	–	–
Rear in-seatback left and right storage compartments and center foldout armrest with two cup holders (RST requires available RST Convenience Package; LT Trail Boss requires available LT Trail Boss Convenience Package or Convenience Package with Bucket Seats)								
<b>Uplevel Rear Seat with Storage Package (Crew Cab)</b>	–	–	–	○	○	○	●	●
Underseat storage, rear in-seatback left and right storage compartments and center foldout armrest with two cup holders (LT, RST and LT Trail Boss require available Leather Package)								
<b>LT Value Package</b>	–	–	–	○	–	–	–	–
Remote Start Package, Trailing Package, 18" Bright Silver-painted aluminum wheels (PZX) and all-weather floor liners								
<b>RST Value Package</b>	–	–	–	–	○	–	–	–
Trailing Package, 20" painted-aluminum wheels with machined face and Argent Metallic pockets (RD4) and all-weather floor liners								
<b>LT Convenience Package</b>	–	–	–	○	–	–	–	–
Dual-zone automatic climate control, 10-way power driver-seat adjuster with power lumbar control, heated driver and front outboard passenger seats, heated leather-wrapped steering wheel, manual tilt/telescoping steering column with electric theft-deterrent locking feature, two charge-only USB ports <sup>1</sup> in second row, rear-window defogger, rear 12-volt auxiliary power outlet, Keyless Open and Start, remote vehicle starter system, unauthorized entry theft-deterrent system, front 40/20/40 split-bench seat with underseat storage, EZ Lift power lock and release tailgate, and LED cargo area lighting in pickup bed								
<b>Remote Start Package</b>	–	–	–	○	–	–	–	–
Remote vehicle starter system, unauthorized entry theft-deterrent system and rear-window defogger (not available with LT Convenience Package, All Star Edition or Texas Edition)								
<b>RST Convenience Package</b>	–	–	–	–	○	–	–	–
Dual-zone automatic climate control, 10-way power driver-seat adjuster with power lumbar control, heated driver and front outboard passenger seats, heated leather-wrapped steering wheel and manual tilt/telescoping steering column; Crew Cab models include Cloth Rear Seat with Storage Package								
<b>LT Trail Boss Convenience Package</b>	–	–	–	–	–	○	–	–
Dual-zone automatic climate control, 10-way power driver-seat adjuster with power lumbar control, heated driver and front outboard passenger seats, heated steering wheel, manual tilt/telescoping steering column and Cloth Rear Seat with Storage Package								

	WT	CUSTOM	CUSTOM TB	LT	RST	LT TB	L TZ	HIGH COUNTRY
<b>INTERIOR (CONTINUED)</b>								
<b>Convenience Package with Bucket Seats</b>	–	–	–	–	○	○	–	–
Front bucket seats, center console, dual-zone automatic climate control, 10-way power driver-seat adjuster with power lumbar control, heated driver and front passenger seats, heated steering wheel and manual tilt/telescoping steering column; Crew Cab models include Cloth Rear Seat with Storage Package; RST includes leather-wrapped steering wheel								
<b>Convenience Package II</b>	–	–	–	○	○	○	–	–
Universal Home Remote, power-sliding rear window, 120-volt bed- and instrument panel-mounted power outlets (400 watts shared), Chevrolet Infotainment 3 Plus system <sup>2</sup> ; two USB ports; SD card reader, SiriusXM <sup>®</sup> with 360L <sup>3</sup> – All Access Package with 3-month trial subscription, HD Radio <sup>®</sup> and HD Rear Vision Camera; <sup>4</sup> Crew Cab LT includes Cloth Rear Seat with Storage Package; RST and LT Trail Boss include Bose premium 7-speaker sound system (LT requires available LT Convenience Package, Trailing Package and trailer brake controller; RST requires available Convenience Package with Bucket Seats, Trailing Package and trailer brake controller; LT Trail Boss requires available Convenience Package with Bucket Seats and trailer brake controller)								
<b>Leather Package</b>	–	–	–	○	○	○	–	–
Crew Cab includes Uplevel Rear Seat with Storage Package (LT requires available Convenience Package II; RST and LT Trail Boss require available Convenience Package with Bucket Seats and Convenience Package II)								
<b>Trailing Camera<sup>4</sup> Package</b>	–	–	–	○	○	○	○	○
Bed View Camera, Trailing App and two trailer view camera provisions (LT, RST and LT Trail Boss require available Convenience Package II and Safety Package)								
<b>All Star Edition</b>	–	–	–	○	○	–	–	–
Convenience Package, heavy-duty automatic locking rear differential and Trailing Package (not available with Texas Edition)								
<b>Texas Edition</b>	–	–	–	○	○	–	–	–
LT Convenience Package, heavy-duty automatic locking rear differential, Trailing Package and Texas Edition badging (available only in Texas and surrounding states; not available with All Star Edition)								
<b>L TZ Convenience Package</b>	–	–	–	–	–	–	○	–
Heated and ventilated front bucket seats with center console, power-sliding rear window, Universal Home Remote, two USB ports; SD card reader, auxiliary input jack, and power-up/-down tailgate with power lock and release; Crew Cab models include heated rear outboard seats								
<b>L TZ Convenience Package II</b>	–	–	–	–	–	–	○	–
Chevrolet Infotainment 3 Premium with Navigation system <sup>2</sup> ; Bose premium 7-speaker sound system and wireless charging <sup>5</sup> (requires available L TZ Convenience Package)								

<sup>1</sup> Not compatible with all devices. <sup>2</sup> Chevrolet Infotainment System functionality varies by model. Full functionality requires compatible Bluetooth and smartphone, and USB connectivity for some devices. <sup>3</sup> If you decide to continue service after your trial, your selected subscription plan will automatically renew thereafter. You will be charged at then-current rates. Fees and taxes apply. Please see the SiriusXM Customer Agreement at [siriusxm.com](http://siriusxm.com) for complete terms and how to cancel, which includes calling SiriusXM at 1-866-635-2349. All fees and programming are subject to change. <sup>4</sup> Read the vehicle Owner's Manual for important feature limitations and information. <sup>5</sup> The system wirelessly charges one compatible mobile device. Some phones have built-in wireless charging technology and others require a special adaptor/back cover. To check for phone or other device compatibility, see [my.chevrolet.com/learn](http://my.chevrolet.com/learn) or consult your carrier.

## AVAILABLE PACKAGES (CONTINUED)

● STANDARD ○ AVAILABLE – NOT AVAILABLE

	WT	CUSTOM	CUSTOM TB	LT	RST	LT TB	LTZ	HIGH COUNTRY
<b>INTERIOR (CONTINUED)</b>								
LTZ Plus Package	–	–	–	–	–	–	○	–
LTZ Convenience Package and Safety Package (not available with LTZ Premium Package or LTZ Texas Edition)								
LTZ Premium Package (Crew Cab)	–	–	–	–	–	–	○	–
LTZ Convenience Package, LTZ Convenience Package II, Safety Package, Safety Package II, power sunroof and 20" polished-finish aluminum wheels (RD2) (not available with LTZ Plus Package or LTZ Texas Edition)								
LTZ Texas Edition	–	–	–	–	–	–	○	–
LTZ Convenience Package, Safety Package and Texas Edition badging (available only in Texas and surrounding states; not available with LTZ Plus Package or LTZ Premium Package)								
Safety Package	–	–	–	○	○	○	○	–
Front and Rear Park Assist <sup>1</sup> ; Lane Change Alert with Side Blind Zone Alert <sup>1</sup> ; Rear Cross Traffic Alert <sup>1</sup> and perimeter lighting; LT and LTZ 2WD models include front recovery hooks <sup>2</sup> (LT requires available LT Convenience Package; not available with LTZ Premium Package or LTZ Texas Edition on LTZ)								
Safety Package II	–	–	–	–	–	–	○	○
Forward Collision Alert <sup>1</sup> ; Lane Keep Assist with Lane Departure Warning <sup>1</sup> ; Automatic Emergency Braking <sup>1</sup> ; Front Pedestrian Braking <sup>1</sup> ; IntelliBeam headlamps, Following Distance Indicator <sup>1</sup> ; Safety Alert Seat <sup>1</sup> and Adaptive Cruise Control – Camera <sup>1</sup> (LTZ requires available Safety Package)								
Technology Package	–	–	–	–	–	–	○	○
HD Surround Vision <sup>1</sup> with two trailer view camera provisions, Rear Camera Mirror <sup>1</sup> ; Bed View Camera <sup>1</sup> and Head-Up Display; LTZ includes enhanced Driver Information Center (LTZ requires available LTZ Convenience Package II, Safety Package II and power-up/-down tailgate; High Country requires available Safety Package II)								
High Country Deluxe	–	–	–	–	–	–	–	○
Safety Package II, power sunroof, 22" polished-aluminum wheels (RVA) and all-weather floor liners (not available with 271 Off-Road Package)								

<sup>1</sup> Read the vehicle Owner's Manual for important feature limitations and information. <sup>2</sup> To avoid the risk of injury, never use recovery hooks to tow a vehicle. See the Owner's Manual for more information.

## DIMENSIONS

	REGULAR CAB	DOUBLE CAB	CREW CAB
Length	229.5"	231.7"	231.7"-241.2"
Wheelbase	139.6"	147.5"	147.4"-157.1"
Height	75.6"	75.6"-78.5"	75.4"-78.3"
Width	81.1"	81.2"	81.2"

	REGULAR CAB	DOUBLE CAB	CREW CAB
Head Room (front/rear)	43.1"/-	43.0"/39.9"	43.0"/40.1"
Leg Room (front/rear)	44.5"/-	44.5"/35.2"	44.5"/43.4"
Shoulder Room (front/rear)	66.1"/-	66.0"/64.9"	66.0"/65.2"
Hip Room (front/rear)	60.9"/-	61.2"/60.2"	61.2"/60.2"

## MAXIMUM CAPACITIES

	REGULAR CAB	DOUBLE CAB	CREW CAB
Fuel tank (approximate)	28 gallons 22 gallons (2WD Diesel)	24 gallons 22 gallons (2WD Diesel)	24 gallons 22 gallons (2WD Diesel)

Cargo volume <sup>1</sup>	89.1 cubic feet (Long Bed) 71.7 cubic feet (Standard Bed) 62.9 cubic feet (Short Bed)
---------------------------	---



Experience Chevrolet Complete Care, a comprehensive coverage, warranty and protection program that comes standard with every new 2020 Chevrolet Silverado lease and purchase. Simply, it is designed around you, to make it easy to keep your Chevrolet like new – and give you the confidence you deserve when you need it most.

### Your comprehensive owner benefit program.

Includes one maintenance visit (oil change, tire rotation and multi-point vehicle inspection)<sup>2</sup>

5 years/60,000 miles<sup>3</sup> of Roadside Assistance<sup>4</sup> and Courtesy Transportation.

3-year/36,000-mile<sup>3</sup> Bumper-to-Bumper Limited Warranty.

5-year/60,000-mile<sup>3</sup> Powertrain Limited Warranty.

5-year/100,000-mile<sup>3</sup> Diesel Limited Warranty.

6 years/100,000 miles<sup>3</sup> of Rust-Through Protection.

**Additional Complete Care coverage, standard on Silverado LT, RST, LT Trail Boss, LTZ and High Country, and available on Silverado WT, Custom and Custom Trail Boss, includes:**

Chevrolet Connected Access<sup>5</sup> with 10 years of standard connectivity, which currently enables features such as Vehicle Diagnostics and Dealer Maintenance Notification.

1 month of Chevrolet Connected Services<sup>6</sup> and 1 month of OnStar Safety & Security Plan coverage<sup>6</sup>

## NEW VEHICLE LIMITED WARRANTY

### 3-year/36,000-mile Bumper-to-Bumper Limited Warranty.

Chevrolet will warrant each 2020 Silverado from bumper to bumper for 3 years/36,000 miles (whichever comes first; see dealer for details), with no deductible, from the original in-service date of the vehicle, for warrantable repairs that are required as a result of defects due to materials and/or workmanship. Cosmetic corrosion resulting from defects is also covered under the Bumper-to-Bumper Limited Warranty. In addition, rust-through corrosion will be covered for 6 years/100,000 miles (whichever comes first).

See dealer for details.

### 5-year/60,000-mile transferable Powertrain Limited Warranty.

Every 2020 Silverado comes with a 5-year/60,000-mile (whichever comes first) transferable Powertrain Limited Warranty. Silverado equipped with a Duramax 3.0L Turbo-Diesel engine comes with a 5-year/100,000-mile (whichever comes first) Powertrain Limited Warranty. 24/7 Roadside Assistance and Courtesy Transportation are also offered for the duration of the Powertrain Limited Warranty. Please see your Chevrolet dealer for details.

<sup>1</sup> Cargo and load capacity limited by weight and distribution. <sup>2</sup> Maintenance visit must occur within first year of vehicle delivery. Service visit consists of ACDelco dexos1™ Full Synthetic Oil and Filter Change/Tire Rotation/MPVI. Does not include air filters. See participating dealer for other restrictions and complete details. <sup>3</sup> Whichever comes first. See dealer for details. <sup>4</sup> Roadside service provided by Allstate Roadside Services. Limitations apply. <sup>5</sup> Standard connectivity available only to original purchaser for 10 years. Services enabled by Connected Access are subject to change. Does not include emergency or security services. Diagnostic capabilities vary by model and service plan. Message and data rates may apply. Requires contact method on file and enrollment to receive alerts. Not all issues will deliver alerts. Visit onstar.com for details and limitations. <sup>6</sup> Connected services include navigation services and Remote Access Plan. Services subject to terms and limitations. Certain services require working electrical system, cell reception and GPS signal. OnStar links to emergency services. Visit onstar.com for details. Availability subject to change.

## IMPORTANT INFORMATION

**Chevrolet Owner Center (my.chevrolet.com).** Everything you need to know. Anything you need to do. Your Chevrolet Owner Center makes it easy. Create your account today to get the most out of your new vehicle. Get special alerts and offers, schedule service, review your maintenance schedule, and view how-to videos specifically for your vehicle. All online, anytime. Visit the Owner Center today to register or take a tour.

**Engines.** Chevrolet products are equipped with engines produced by GM Global Propulsion Systems or other suppliers to GM worldwide. The engines in Chevrolet products may also be used in other GM makes and models.

**Assembly.** Chevrolet vehicles and their components are assembled or produced by different operating units of General Motors, its subsidiaries or suppliers to GM worldwide. We sometimes find it necessary to produce Chevrolet vehicles with different or differently sourced components than originally scheduled. Since some options may be unavailable when your vehicle is assembled, we suggest you verify that your vehicle includes the equipment you ordered and that, if there were changes, they are acceptable to you.

**Chevrolet Connected Services and OnStar.** Connected vehicle services vary by vehicle model and require an active service plan, working vehicle electrical system (including battery), cell reception and GPS signal to function properly. Visit [onstar.com](http://onstar.com) for details and limitations.

**A note on child safety.** Always use seat belts and the correct child restraint for your child's age and size, even with airbags. Even in vehicles equipped with the Passenger Sensing System, children are safer when properly secured in a rear seat in the appropriate infant, child or booster seat. Never place a rear-facing infant restraint in the front seat of any vehicle equipped with an active frontal airbag. See your vehicle Owner's Manual and the child safety seat instructions for more safety information.

**Important words about this catalog.** We have tried to make this catalog comprehensive and factual. We reserve the right, however, to make changes at any time, without notice, in prices, colors, materials, equipment, specifications, models and availability. Specifications,

dimensions, measurements, ratings and other numbers in this catalog and other printed materials provided at the dealership or affixed to vehicles are approximations based on design and engineering drawings, prototypes and laboratory tests. Your vehicle may differ due to variations in manufacture and equipment. Since some information may have been updated since the time of printing, please check with your Chevrolet dealer for complete details. Chevrolet reserves the right to lengthen or shorten the model year for any product for any reason or to start and end model years at different times. Certain vehicle features may lose their usefulness over time due to obsolescence from technological changes. Unless otherwise noted, all claims based on GM Large Pickup segment and latest available competitive information. Excludes other GM vehicles.

**Fleet orders.** Some standard content may be deleted on fleet orders. See dealer for details.

**Chevrolet ownership experience.** Chevrolet is committed to enhancing the vehicle shopping and ownership experience through a wide array of programs. Visit [chevrolet.com](http://chevrolet.com) to build and price, find a vehicle, request a quote, compare vehicles, find financial tools or track your vehicle order. You'll also find information about 24-hour Roadside Assistance, Courtesy Transportation, Customer Assistance, GM Mobility, safety and current incentives.

**Chevrolet.com/safety.** Chevrolet is committed to keeping you and your family safe – from the start of your journey to your destination. That's why every Chevrolet is designed with a comprehensive list of safety and security features to help give you peace of mind.

**GMmobility.com (1-800-323-9935).** GM Mobility<sup>SM</sup> offers financial assistance for eligible adaptive equipment to make automotive travel easier for persons with disabilities or special transportation needs. To learn more about special GM Mobility offers, visit [gmmobility.com](http://gmmobility.com).

**The BuyPower Card.** The Chevrolet BuyPower Card – Every purchase you make with the BuyPower Card from Capital One\* helps you earn toward an eligible new Chevrolet, Buick, GMC or Cadillac vehicle. There's no limit on the amount you can earn or redeem, and your Earnings don't expire. Visit [chevroletbuypowercard.com/catalogs](http://chevroletbuypowercard.com/catalogs).

\* Capital One, N.A. is the issuer of the BuyPower Card. General Motors ("GM") is responsible for the operation and administration of the Earnings program.



GM, the GM logo, Chevrolet, the Chevrolet logo, and the slogans, emblems, vehicle model names, vehicle body designs and other marks appearing in this catalog are the trademarks and/or service marks of General Motors, its subsidiaries, affiliates or licensors. ©2019 OnStar LLC. All rights reserved. Sirius, XM, SiriusXM and all related marks and logos are trademarks of Sirius XM Radio Inc. Bose is a registered trademark and Richbass is a trademark of the Bose Corp. The Bluetooth word mark is a registered trademark owned by Bluetooth SIG, Inc., and any use of such mark by Chevrolet is under license. Goodyear and Wrangler DuraTrac are registered trademarks of the Goodyear Tire & Rubber Company.

©2019 General Motors. All rights reserved. September 2019

FIND NEW ROADS™

CHEVROLET.COM

